

PORTABLE

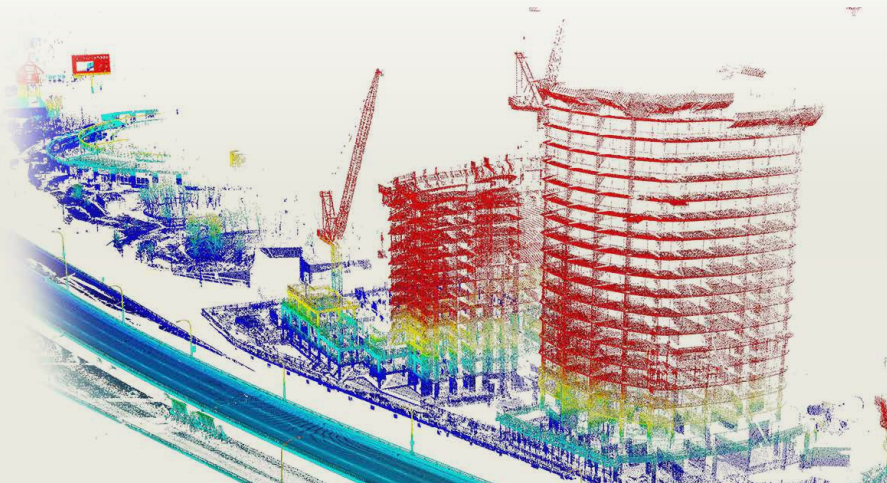
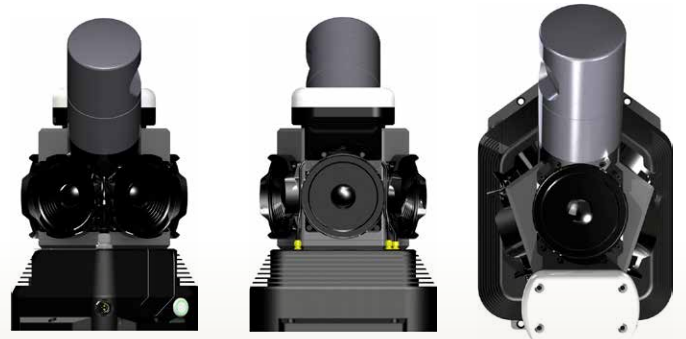
Weighing under 9 kilograms, Maverick can be both installed and removed by a single individual. Maverick is easily mounted on a variety of platforms, including vehicles, ATVs/UTVs, Segways, trains, and backpacks. The portable system is able to operate in a wide range of conditions and can be utilized for projects of any size and scope.

POWERFUL

Combining high-resolution 360° imaging, high-definition lidar, and an integrated position and orientation system, the Maverick delivers impressive and accurate mobile data. Maverick collects up to 700,000 data points per second, and captures high-resolution images using six high-quality 5-MP sensors. The Maverick comes packaged with real-time data display and feedback, along with Distillery software to provide imaging, lidar, and GPS post-processing.

PROVEN

Maverick was developed to fill the need in the industry for a portable and powerful mobile mapping unit. Maverick provides a robust and multi-functional dataset that can be utilized for a wide range of projects and applications. To date, Maverick has collected data in the industries of transportation safety, construction, asset management, rail, utilities, and 3D modeling.



Specifications

System			
Operating Temperature	32° to 110°F (0° to 43°C)	Power Supply	12 V - 36 V DC
Dimensions	13.60" × 8.50" × 14.28" (34.4 cm × 21.6 cm × 36.3 cm)	Weight	8.85 kg
Mount	Mount bolts to existing roof racks (four 1/4" screws) or quick release installation; specific vehicle mount options available		
Laser Components			
Type	Velodyne HDL-32	Laser/Detector Pairs	32
Vertical Field-of-View	+10° to -30°	Horizontal Field-of-View	360°
Accuracy	2 cm (one sigma at 25 m)	Output	Up to 700,000 points/second
Safety	Class 1, eye-safe		
Imaging Components			
Type	Ladybug 5	Megapixels	30 MP (5 MP × 6 sensors)
Imaging Sensor	Sony ICX655 CCD × 6, 2/3"	Optics	6 high-quality 4.4-mm focal length lenses
Field-of-View	90% of full sphere	Spherical Distance	Calibrated from 2 m to infinity
Focal Distance	≈200 cm. Objects have an acceptable sharpness from ≈60 cm to infinity		
Positioning Components			
Type	NovAtel SPAN-IGM-S1 (novatel.com)		
Integrated Software			
Collection & Viewing	Real-time web-based data display and feedback; moving map display; accessible by any device with a Wi-Fi connection		
Distillery	Image, lidar, and GPS post-processing software; flexible data format output that can be imported into third-party cloud and asset management software		
Shipping Case			
Type	Durable, custom-designed shipping case	Dimensions	55.9 cm × 45.7 cm × 25.4 cm (22" × 18" × 10")
Shipping Weight	18.14 kg		