



Introducing Trimble TSC710, Spectra Geospatial Ranger 710, and Trimble T110

Connect to a better way to work

Presented By: Devin Kowbuz, Connie Colligan, Jeff Siler

© 2025 Trimble, Inc - All Rights Reserved





The 2025 Lineup



TSC510



TSC710 / Ranger 710



T110

Released September 10



Connect to a better way to work

With the improvements made to the TSC710 / Ranger 710 and T110, working with complex data and managing projects is faster, more efficient, and more reliable than ever before. They are functional, rugged, fit for purpose, and practical, ensuring they will finish a day's work without failing, breaking, or losing data.

The TSC710 / Ranger 710 are updated with an improved ergonomic form factor, Android OS with powerful processor, and the convenience of Android Quick Share and the new Trimble Data Manager file application.

The Trimble® T110 tablet has been updated with an improved processor, full communication capabilities and all day hot swappable batteries.



Table of contents

- 01** TSC710 / Ranger 710 Introduction
- 02** T110 Introduction
- 03** Marketing Assets





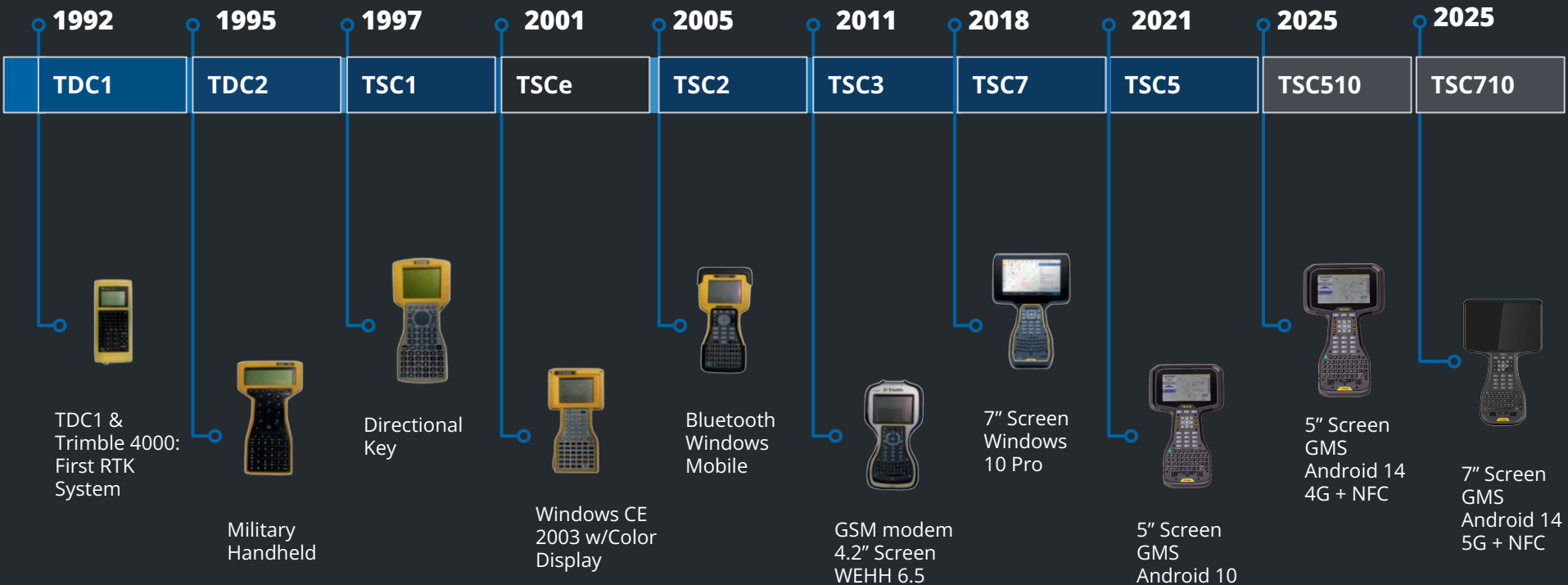
01

TSC710 / Ranger 710 Introduction

Public announcement **October 7, 2025**



The TSC continuum: 33 year legacy





| | TSC7 / Ranger 7 | TSC710 / Ranger 710 |
|------------------------------|---------------------------------|-------------------------------|
| Memory | 8 GB | 8 GB |
| OS | Windows 10 | Android 14 (upgradable) |
| Battery Life | 8 hours | 9 - 11.5 hours |
| Weight | 1420 g | 1270 g |
| IP Rating | IP68 | IP68 |
| Processor | 1.1 GHz Intel Apollo Lake N4200 | 2.7 GHz Qualcomm QCS6490 |
| Storage | 128 GB | 128 GB |
| Charge Time | 3.5 hours | 2.5 hours |
| I/O | USB Type A | USB Type C |
| WWAN | 4G LTE | 5G, 4G LTE |
| Bluetooth Standard | 5.1 | 5.2, BLE 5, Class 1 |
| Camera | Rear 8MP, Front 2MP | Rear 16 MP (autofocus) |
| MIL-STD | 810G | 810H |
| EMPOWER | 2 Bays | 2 Bays |
| Battery Configuration | Replaceable | Internal + replaceable option |
| NFC | No | Yes |





TSC710 / Ranger 710 Features





Fully connected and rugged

Get to work immediately with this fully connected, powered-up, and rugged solution

- **Powerful processing power**
 - Modern Qualcomm chipset that is more powerful while using less battery power and producing less heat
 - Focused architecture on field software operations making opening files quicker and drawing maps even faster
 - More memory allows for opening bigger files
- **Android 14 GMS certified OS**
 - Current OS with all the modern cyber security features
 - Supports all current standards
 - Provides a path forward to future improvements
- **Ergonomics**
 - Narrow neck makes the device easy to grip
 - Lighter weight reduces strain and fatigue





Key features, continued

- **Complete keyboard**
 - Keyboard layout provides good layout, flexibility and positive tactile feedback, even when wearing gloves
 - Wide range of special characters and function keys
- **7" screen**
 - Enough screen to interact with your data and make using map views effective and useful but not so big that it's unwieldy in the field
 - The screen is bright and easy to view in the field in all lighting conditions
- **Battery management and life**
 - Internal batteries are easy to manage.
 - USB-C port with rapid charging capabilities
 - Optional removable battery provides confidence and continual power if necessary
- **5G WWAN (data only), WiFi, Bluetooth, NFC, Empower**
 - Modern tech to support newest standards





Parts of the TSC710 controller



TSC710 / Ranger 710 detailed diagram

| | | | |
|----|--------------------------------------|----|---------------------------------|
| 1 | Ambient light sensor | 14 | Speaker |
| 2 | Android keys | 15 | Trimble Empower module bays- |
| 3 | Function keys (F1 - F3, F4 - F5) | 16 | Stylus holder |
| 4 | Power / battery charging LED | 17 | Trimble Empower module contacts |
| 5 | Power key | 18 | Pole mount screws |
| 6 | Shift LED | 19 | Handstrap connector points (x4) |
| 7 | CAPS lock LED | 20 | Stylus tether points |
| 8 | LEDs left to right; Fn, Ctrl, Search | 21 | Gore Vent: DO NOT COVER! |
| 9 | Microphone (x2) | 22 | Camera & camera flash |
| 10 | OK and directional keys | 23 | NFC Antenna |



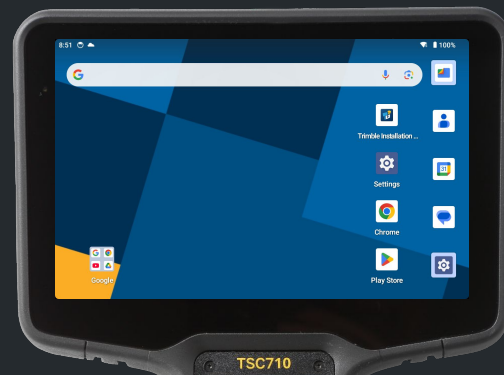
Keyboard - keys & LEDs

- **Large, well spaced buttons**
 - Alphanumeric keyboard with English international standard QWERTY layout with multiple language support
 - Best case for use when wearing gloves
 - Tactile feel
- **Iconic Trimble spider key & double-size enter key**
 - Works seamlessly with Access
- **Function keys**
 - 11 physical + multiple Fn, Shift & AGr key combinations
 - Setup custom keys within Access like the camera or Measure Codes function
- **Android navigation keys**
 - Back, Home, and Overview
- **Backlit keyboard**
 - Easier to see in dim/dark conditions
 - Fully controllable via Settings
- **Notification LEDs**
 - Power/Battery status key LED rapidly responds to confirm action
 - Other LEDs indicators include: Shift, Fn, Ctrl, AGr, Caps Lock, Search, and Cursor Lock



Screen

- **7" landscape orientation**
 - Smaller bezels than TSC7
 - Optimized landscaped aspect ratio:16:10
 - High resolution HD (1280x800 px) 215 DPI display
 - 800 cd/m² sunlight readable LED backlight
- **Projective capacitive multi-touch touchscreen**
 - Stylus, finger and glove modes
 - Ships with the same stylus as TSC7, T7, TSC5 & TSC510
 - Other capacitive styli will work as long as they have a rubber tip
- **Glass Screen protector**
 - Protective coating included
 - Similar to TSC5 & TSC7



Capacitive stylus included

Secures in its own holder on the back



Battery configuration

Internal batteries

- 2 internal 'sealed' Li-Ion 21700 battery cells
- 4600 mAh / 7.2 V / 33 Wh nominal capacity
- Internal batteries will retain 80% power density after two years of regular use.

User replaceable battery

- Optional user replaceable Li-Ion battery pack
- Nearly doubles the battery life

Battery life (Internal batteries)

- Robotic Total Station with radio module: 9 hours *
- GNSS with RTK network corrections: 11.5 hours*
- * Battery life is affected by display settings, connectivity, data processing, ambient temperature, etc.

Batteries allow for unit power up at -20°C (-4°F)

- Unit can then operate down to -30°C (-22°F)
- This is due to internal heating while the unit is operational





I/O - USB-C port configuration

USB Type C connector for charging, data transfer & accessories

- Located under the dust cover

Charging

- USB Type-C, PD 2.0 compliant
 - Supports charger power inputs of 5V, 9V & 12V at 3A
- Works with standard USB-C charging systems
- Full-charge 2.5 hours, 0-50 % charge in 1.5 hours

Data Transfer

- Host & client functionality
- Direct connection to a PC
- Need to set the USB settings to "File Transfer"
- USB 3.1 Gen 1 data transfer (5Gbps)

Accessories

- Displayport alternate mode via USB Type-C (to drive an external monitor)
- Compatible with screw locking connectors





Optional removable battery

Updated Trimble Li-35 (PN 220200 & 220200-HH) user replaceable Lithium-ion battery pack

- Nearly doubles the battery life
- Updated Li-35 is compatible with TSC5 / Ranger 5, TSC510 & TSC710 / Ranger 710
- Older Li-35 batteries (PN 120200-SUR & 120200-HH) are not compatible with TSC510 & TSC710 / Ranger 710
 - Ridge/Grip design on the sides will not allow an older battery to be installed in TSC510 or TSC710 / Ranger 710
- Designed for use only in specified Trimble and Spectra Geospatial® products
- Features:
 - USB-C port for convenient charging
 - Can be charged by host devices without needing to be removed
 - LED fuel gauge with bright white LEDs
 - Grip and alignment features
 - Power/Communications interface for host device





Radios - Communication

WWAN (data only):

- Single Worldwide SKU
- 5G Sierra Wireless EM9291, Worldwide 4G LTE & UMTS 3G in regions where it is available
- AT&T and Verizon certified
- NanoSIM card

WiFi:

- WiFi® 6, 2.4 GHz (802.11 b/g/n/ax) & 5.0 GHz (802.11 a/n/ac/ax)

Bluetooth:

- Bluetooth® 5.2, BLE 5, Class 1

Near Field Communication (NFC):

- NFC NXP PN-7160, Reader/Writer Mode





GNSS

- **Integrated Sierra Wireless EM9291**
- **Dual Frequency**
 - L1 C/A, GPS, GLONASS, BeiDou, Galileo, QZSS
- **Accuracy**
 - 4M horizontal RMS in favorable conditions



Camera, audio & sensors

Camera & flash

- Rear camera: 16 MP auto-focus with LED flash

Audio

- Mono speaker and dual microphones with noise-canceling technology
- USB-C & Bluetooth headsets are supported

Integrated sensors

- Ambient light sensor
- e-Compass (electronic compass)
- Accelerometer
- Gyro sensor
- NEW sensors for data collectors:
 - Temperature sensors
 - Power/current sensor

Parts of the TSC710 controller





Environmental specifications (MIL-STD-810H & IP68)

Operating temperature:

- -30 °C to +60 °C (-22 °F to +140 °F)

Storage temperature:

- -40 °C to +70 °C (-40 °F to +158 °F)

AC adapter / charging temperature:

- 0 °C to +45 °C (32 °F to 113 °F)

Dust IP6x:

- 8 hours with blowing talcum powder (IEC-529)

Water IPx8:

- Immersion, up to 1 m (3.2 ft) depth for 2 hours (IEC-529)

Transit Drop:

- Procedure IV 26 drops (each face, edge & corner) at room temperature from 1.22 m (4 ft) onto plywood and concrete 6 faces at low and high temps (-30 °C and +60 °C) (-22 °F and +140 °F) Ball drop similar to IEC 60950-1, 50 mm steel ball dropped 0.5 m on touch panel only—5 drops, center and 4 corners

Humidity:

- 90% RH temp cycle 30 °C / 60 °C (86 °F / 140 °F)

Vibration:

- General minimum integrity and loose cargo test





Environmental specifications continued

Altitude (low pressure)

- Procedures I (storage), II (operating) & III (rapid decompression) Operational at 9,144 m (30,000 ft) at 5 °C / 41 °F Storage at 12,192 m (40,000 ft) at -30 °C / -22 °F Rapid decompression 2,438m (8,000 ft) to 12,192 m (40,000 ft) in <15 seconds at 25 °C / 77 °F

Temperature shock

- Survives cycles between -30 °C and +60 °C (-22 °F and +140 °F)

Solar exposure

- Survives prolonged solar exposure

Salt spray

- ASTM B117 5% salt solution, 96 hrs





TSC710 / Ranger 710 Operating system & cyber security





TSC710 / Ranger 710 operating system

android 

- Android 14 - upgradeable
- The Trimble OS is **GMS (Google Mobile Services) certified** which means that Google has certified the OS/Hardware combination, and provides standardized, enterprise grade features and expertise
- We have an agreement with Google to provide OS security updates no older than 90 days
 - Security updates are deployed to devices from the Google OTA (Over the Air) server - over WiFi or WWAN, and the end user decides when to install them
 - Trimble Installation Manager (TIM) is used to update Trimble software such as Trimble Access and Siteworks
- The processor determines if we can update to newer versions of Android



Cyber security - FAQs

Trimble sends updates to the device
~every 90 days

Do I ever need to install the Trimble OS Build?

- No! The latest OS is included and comes standard on your device, there is no separate file to download/install.

Do I have to do anything special to keep my device updated?

- No! Updates are sent directly to your device
- OS Updates will not overwrite your data.

How often do I need to update my device?

- You'll get a notice to update the OS once a quarter.
- Android OS security updates are not automatic - you must choose to install them (unless you have set this as default in the settings)





Android additions

- Teamviewer support
- Custom Trimble Data Manager (TDM) App
 - New file management application built by Trimble
 - Seamless file sharing
- Android Quick Share:
 - Send/receive files from nearby devices





Trimble Data Manager

Android File Transfer Application





TDM Introduction

- Android-based file explorer offering a familiar, Windows-like file management interface.
- Built for the newer Android survey controllers running Android 13 or above.
 - TSC5 / Ranger 5, TSC510 & TSC710 / Ranger 710
- Designed for direct data transfer with **Trimble® Access™** and **Trimble® Siteworks™** field software.
- Included in the OS and updateable via Google Play





Why was this needed?

Addressing feedback + pain points from customers

- Corrupted USB Devices
- Native Android file explorer inefficiency
- General difficulty copying files from Windows to Android devices

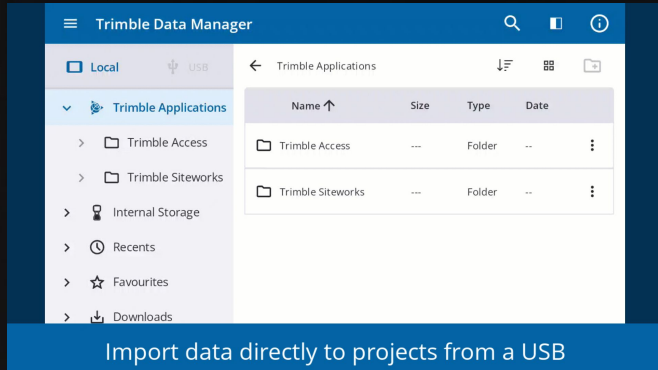
Elimination of data transfer problems = Ease of adoption with new Android based portfolio refresh





Main Features

Browse directly to internal storage and USB devices



Direct access to select
Trimble application folders

Quick access to
essential folders



Main Features

**Direct access to select
Trimble application folders**



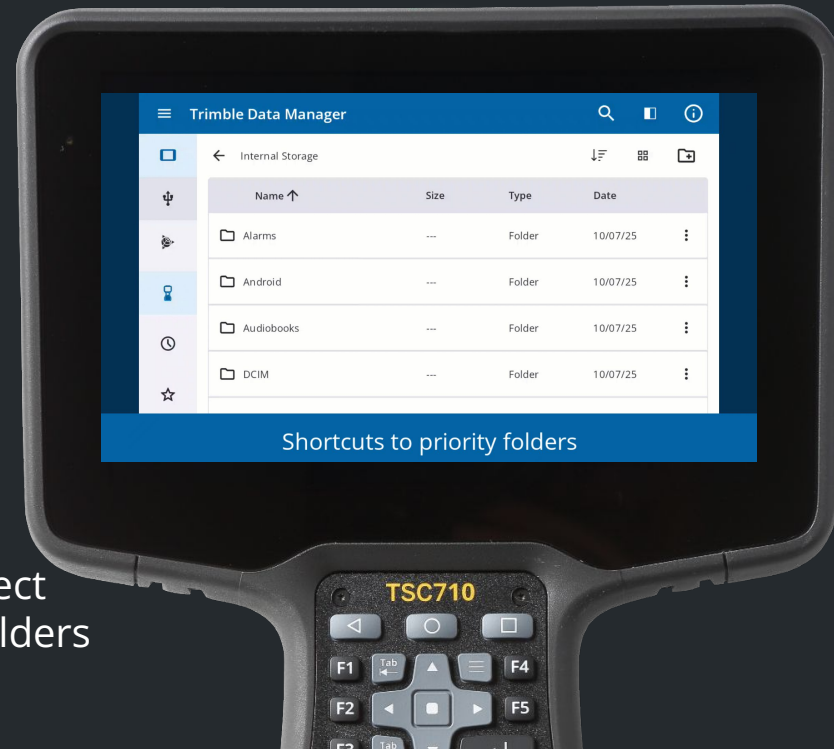
Browse directly to internal
storage and USB devices

Quick access to
essential folders



Main Features

Quick access to
essential folders



Browse directly to internal
storage and USB devices

Direct access to select
Trimble application folders



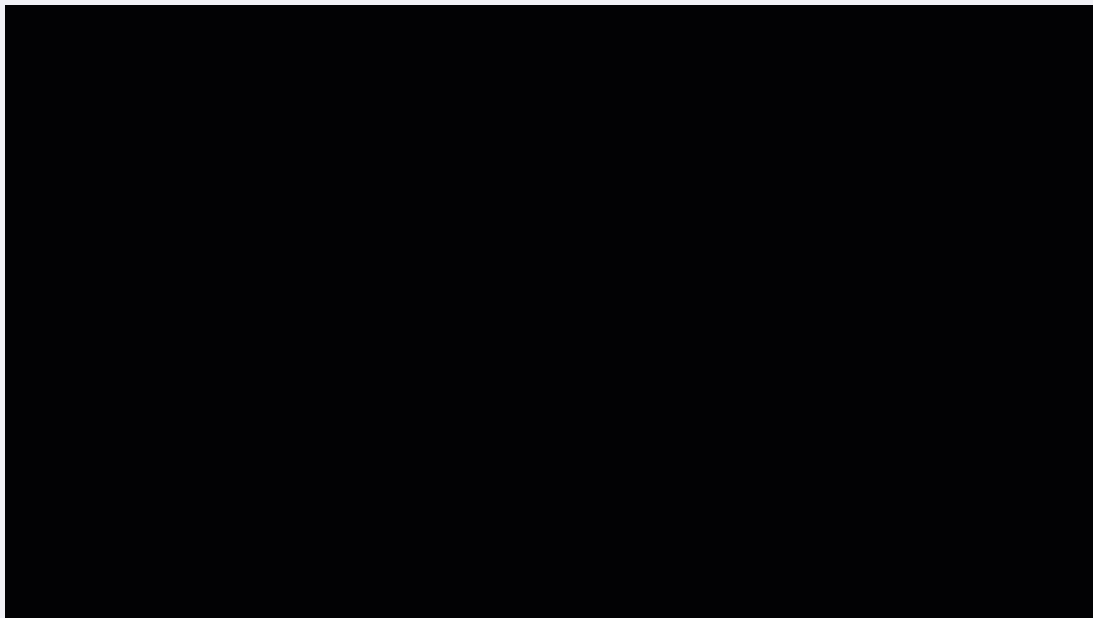
Additional Functionality

Search

Split Screen

Drag and Drop

Favorite, Cut, Paste, Move,
Delete, Rename, Details





Additional Functionality

Search

Split Screen

Drag and Drop

Favorite, Cut, Paste, Move,
Delete, Rename, Details





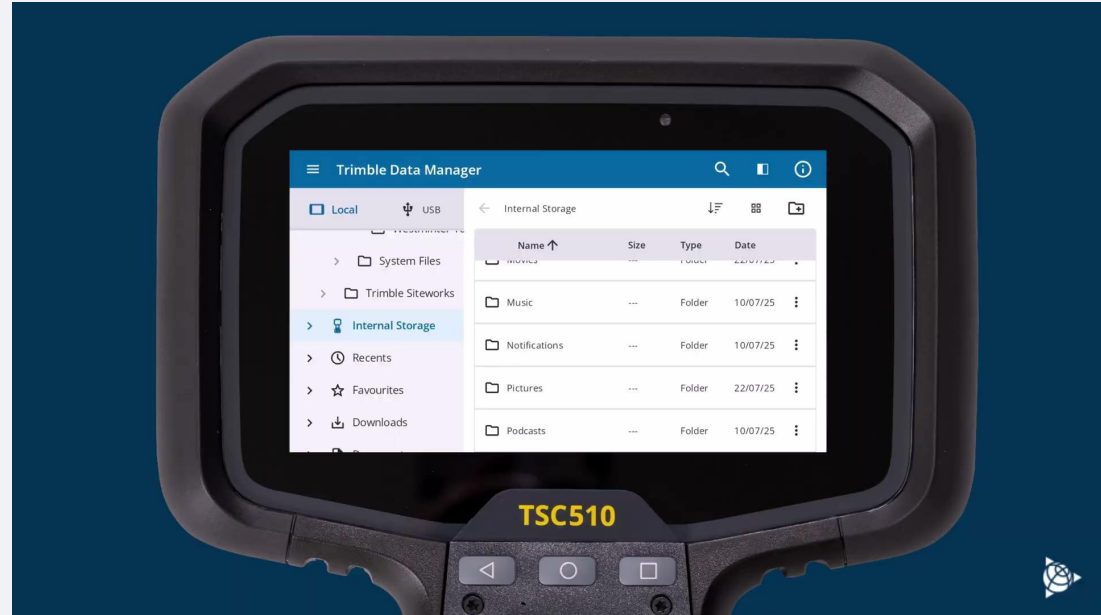
Additional Functionality

Search

Split Screen

Drag and Drop

**Favorite, Cut, Paste, Move,
Delete, Rename, Details**



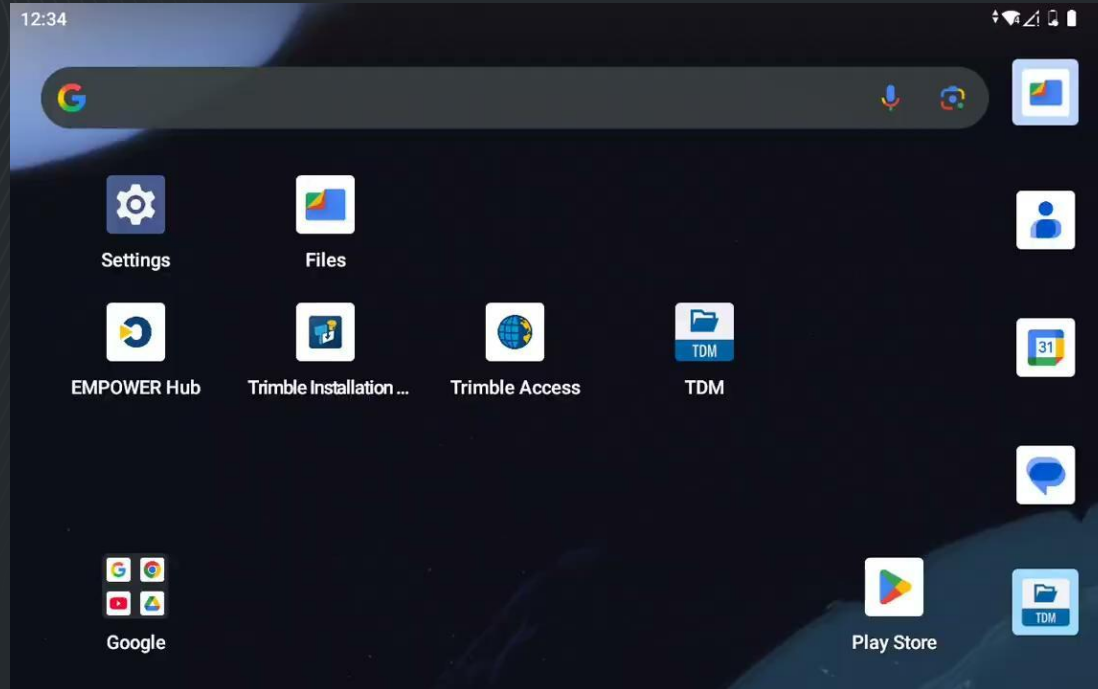


Android Quick Share

- Use Bluetooth and WiFi direct
- Direct connection for fast file sharing
- Can send files to multiple nearby devices simultaneously without compressing the data
 - Android devices, Chromebooks, and some Windows devices depending on the OS



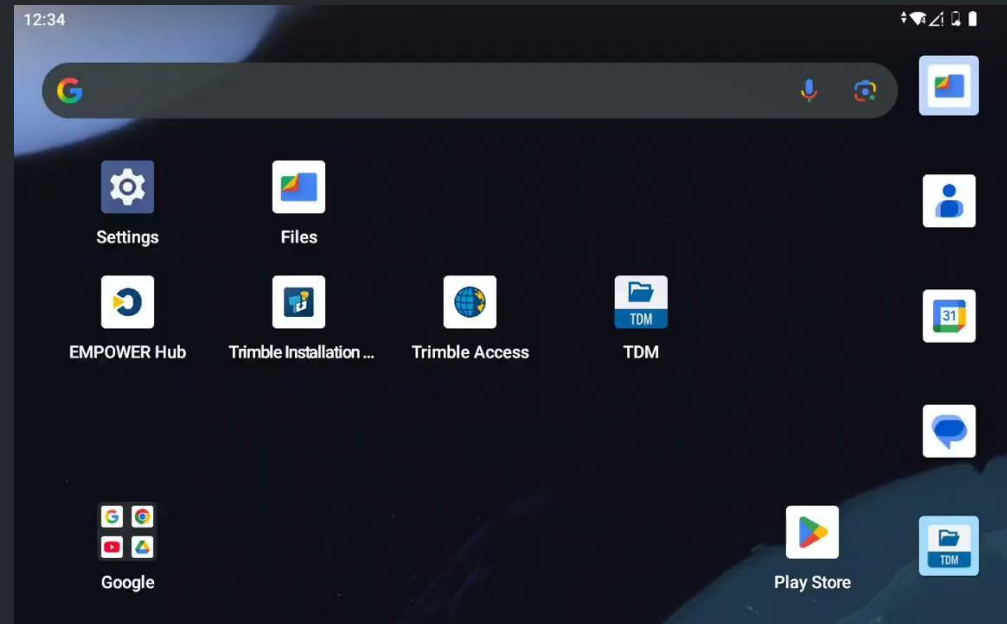
Android Quick Share





TDM with QuickShare

- Use Trimble Data Manager with QuickShare to transfer files from your TSC510 / TSC710/Ranger 710 to a Windows laptop and back via bluetooth or WiFi
- Automatically selects “Downloads” folder for easy file locating
- No need for USB / cables





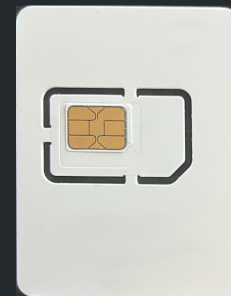
Data plans





Trimble / DAC data subscription plan

- **Multi-network data plan SIM in North America ONLY**
 - 3 carriers (AT&T, Verizon, and T-Mobile) on ONE SIM card
 - 3 carriers in Canada (Telus, Rogers, Bell)
- **Seamless connectivity in a dynamic environment**
- **Solves customer connectivity pain points** → Plug and play solution
- **Dedicated support**
- **Purchase in the iStore, distribute to customers in Virtual Warehouse & activate in Trimble license manager**
- **Product bulletin and webinar coming soon**





Field testing data collectors results

Customer benefits



Productivity

Seamless network switching for continuous connectivity, a wider coverage area and reduces dependency on a single network provider

Real - time data access improves collaboration and decision making

Remote support



Simplify

Single SIM solution eliminates the need for multiple network SIMs / devices (hot spots)

Cost efficiency and simplification of device management

Ease of use - automatic network selection reduces need for manual intervention by customers allowing them to focus on their work



TSC710 / Ranger 710

Part numbers and accessories





TSC710 / Ranger 710 supported software

- Trimble Access™ survey software
- Trimble Siteworks construction software
- Spectra Geospatial Origin software
- Android-based 3rd party apps



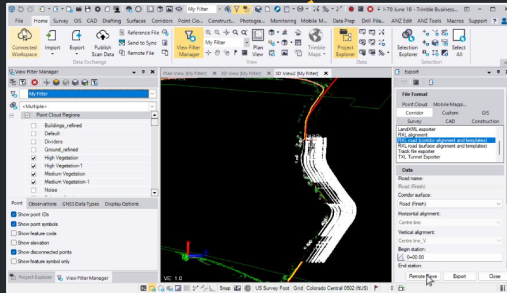


TSC710 / Ranger 710 supported hardware

- Supports all GNSS systems
- Supports current Empower modules
- Supports all mechanical total stations
- Supports all robotic total stations
 - *Hardware support is dependent on the software running on the device



Connect to a better way to work



TSC710 / Ranger 710 part numbers



| Part Number | Description | Channel |
|----------------------------|--|---------------------------|
| TSC710-1-1100-00 | Trimble TSC710 controller - QWERTY keypad, WWAN, worldwide region, standalone | Survey |
| TSC710-1-1100-00-HH | Trimble TSC710 controller - QWERTY keypad, WWAN, worldwide region, standalone | Construction |
| RGR710-1-1100-00 | Spectra Geospatial Ranger 710 data collector - QWERTY keypad, WWAN, worldwide region, standalone | Spectra Geospatial |



Standard accessories

Accessories included in the packout with TSC710 or Ranger 710

- x1 Stylus with lanyard, built in screwdriver & 2 spare tips
- x1 Glass screen protector kit
- x1 Hand strap
- x1 Soft carry case
- x1 2m USB-C (male) to USB-C (male) 3.1 cable for charging & data transfer
- x1 Help Portal QR code business card



Accessories may also be purchased separately

Thank you

for purchasing this
Trimble® product.

To access product documentation,
please scan the QR code:



help.fieldsystems.trimble.com
© 2025 Trimble Inc. All rights reserved. Rev A



PN 180300-10



Optional accessories

Optional accessories for TSC710 & Ranger 710, not included in packout

- Universal USB-C 65w wall charger
- Device Bracket for TSC710 / Ranger 710
 - Replacement quick release pin & stylus holder
- Adjustable Pole Mount Clamp
 - Replacement cam lock assembly
- Updated Li-35 replaceable battery
- [GNSS Transport case](#)
- [Optical accessory case](#)
- Empower modules, antennas and dust caps
- Replacement stylus tips
- Carry case shoulder bag
- Shoulder sling
- USB-C to A adapter
- USB-C vehicle charger



Empower Modules

- Empower module bays expand the TSC710 / Ranger 710 & T110 functionality with optional radio modules
- Supports all active modules:
 - EM120
 - EM130
 - EM940/450
- Accessories for the modules include:
 - Replacement antennas
 - Antenna port dust covers
- Easy installation / removal using the screwdriver inside the stylus
- No Empower bay covers are required - the contact pads are sealed against water and dust ingress
- Empower software is pre-installed and updateable
 - Android: Google Play
 - Windows: Trimble Update Tool





TSC710 / Ranger 710 launch readiness





Country compliance

| Shipping at launch | | |
|--------------------|--------------|-------------------------|
| US & Canada | Taiwan | UAE |
| EU | Mexico | 1-2 months post launch: |
| UK | India | Brazil |
| Australia | Chile | South Korea |
| New Zealand | EAC | Saudi Arabia |
| Japan | South Africa | Thailand* |



*All other countries to be completed by local Trimble Distributor with assistance from Trimble if needed.
China compliance is TBD.



Announcement

Announcement will be made in the GEO, SPECTRA GEOSPATIAL and CIVIL newsletters providing links to:

- Release Overview - messaging and assets
- Marketing assets
- Library of images
- Literature
- Product page
- Sales document
- Technical webinar recording
- Sales presentation



02

Trimble T110 Release Overview

Public announcement, **October 7, 2025**





Do more with the connected, rugged and powerful T110 tablet

The Trimble® T110 tablet is a rugged, high-performance field data collection solution that maximizes productivity and efficiency for reality capture, survey and construction professionals.

It delivers uninterrupted efficiency with seamless Trimble ecosystem integration, delivering confidence at every turn.





What's new?



Faster

Improved processor

Handles any file size with ease, keeping you working and not waiting



Connected

Full communication capability

Wifi, BT, WAN + Robotic Radio

Leverage Trimble Connect or WorksManager for data sharing.



Productive

Everyday extraordinary - can take on any job big or small

All day battery life - hot swappable batteries



Trimble T100

Cellular modem

Empower radio expansion



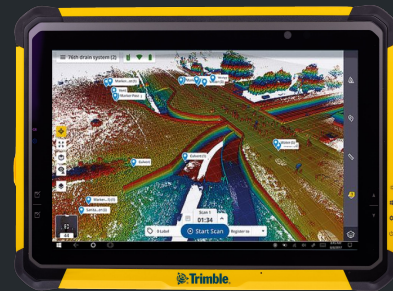
Trimble T110



Trimble T10x

Faster processor

Field swappable batteries



Cellular modem

Faster processor

Empower radio expansion

Field swappable batteries

T110 will replace T100 and T10x in our 10" portfolio



Features

Trimble Empower enables support for robotic total station radios



1 x USB-C
1 x USB (Type A)



- Intel 14th Gen Core Ultra 7
- 32Gb RAM
- 1TB SSD (NVME)
- 90WH hot swap battery
- 10" screen
- Windows 11



Programmable function keys x3



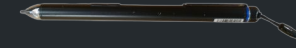
Integrated WWAN with worldwide support



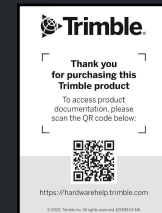
Standard accessories

Accessories included in the packout with T110

- x1 Digital Pen
- x1 Screen Protector
- x1 Hand strap
- X1 90wh removable battery
- x1 Help Portal QR code business card



Accessories may also be purchased separately



Optional Accessories

- Pole mount and clamp
- USB Type C 65W charger
- USB Type C Cable
- Shoulder Strap
- Single Battery Charger



T110 part numbers

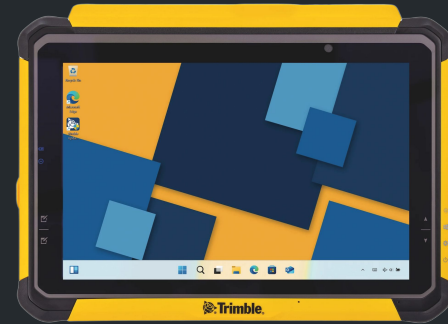


| Part Number | Description | Channel |
|-----------------|-----------------------------|--------------|
| 114050-50-1 | Trimble T110 - Full Packout | Survey |
| 114050-50-1-HH | Trimble T110 - Full Packout | Construction |
| 114050-50-1-FTG | Trimble T110 - Full Packout | Buildings |



Country compliance

| Shipping at launch | By November | |
|--------------------|-------------|--------------|
| US & Canada | Thailand | India |
| EU | South Korea | South Africa |
| UK | UAE | Mexico |
| Australia | China | Brazil |
| New Zealand | Chile | Saudi Arabia |
| Japan | | |
| Taiwan | | |



All other countries to be completed by local Trimble Distributor with assistance from Trimble if needed.



Trimble T110 | Key messaging

Tagline

Connect to a better way to work

Powerful

Maximize all-day field productivity with the T110's long battery life and intelligent power management, ensuring uninterrupted operation

Efficient

With rapid processing, seamless Trimble integration, and advanced security, the T110 empowers users with efficient and secure field data management.

Productive

The T110 is engineered for high-performance field operations, combining powerful processing, versatile connectivity, and seamless sensor integration to maximize efficiency and real-time data sharing.



Target audience

Who we're reaching

- Professionals who demand a rugged, reliable, and high-performance tablet to support their surveying workflows in challenging field conditions.
- **Region:** Worldwide
- **Task performed:**
 - Accurate data collection in diverse environments
 - Real-time data processing and analysis
 - Efficient project management and collaboration
 - Seamless integration with existing Trimble software and hardware
- **Customer key priorities:** Speed, precision, connectivity , durability, ease of use





Industries and applications

Solving industry challenges: real-world applications

Key industries

- Transportation infrastructure
- General construction and civil engineering projects
- Energy, renewables and oil and gas
- Mining

How does it improve or change their workflow?

- Streamlined data collection and processing
- Enhanced decision-making through real-time insights
- Improved project efficiency and collaboration
- Increased accuracy and reliability of field data

What specific challenge or problem does it solve :

- Enables on-site data processing and analysis
- Facilitates seamless integration with existing software and hardware for improved workflow and communication.
- Designed for durability





03

Marketing assets overview

Key highlights

Please note: Do not publish or share any content related to these products prior to the official public announcement on October 7.





Release announcement | October 7, 2025

Links to public and dealer-only assets and information

New and updated product pages for Geospatial, Spectra Geospatial, Building and Civil

Social media campaign starts


TSC710, TSC510 controllers and T110 tablet press release



Dealer-only sales documents

The following sales enablement resources provide a helpful overview of product features, benefits, reasons to buy and how to access:

- Product bulletin
- Sales presentation
- Distributor-only webinar recording




**Introducing
Trimble TSC710,
Spectra Geospatial Ranger 710,
and Trimble T110**

Connect to a better way to work

Presented By: Devin Devin Kowbuz, Connie Colligan, Jeff Siler

© 2025 Trimble, Inc. - All Rights Reserved





Visual assets library

Elevate your marketing and sales materials with our comprehensive library of high-quality product and application images.

- Use them to enhance your marketing and sales materials.
- The visuals will help drive customer engagement.



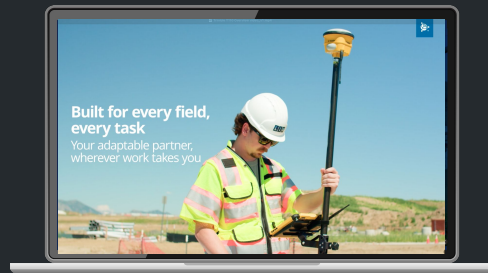


Videos

Dedicated videos have been created.

All videos will be available on YouTube and our websites, as well as for download on the Partner site and MarketSmart.

- Trimble TSC710 and TSC510 (combined)
- Spectra Geospatial Ranger 710
- Trimble T110





Distributor marketing assets

Available for Trimble TSC710 / Ranger 710, TSC510 controllers and T110 tablet.

- Email signature
- Social media images

The links for downloading all Marketing assets will be shared in the dealer newsletters on October 1 and available on the Partner sites and MarketSmart.





Customer-facing literature

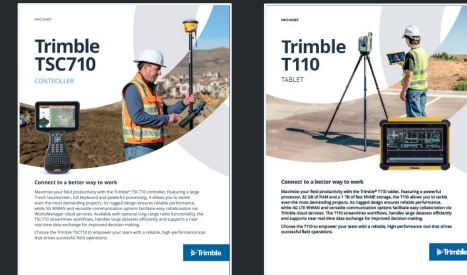
New literature is available

- Spec sheets
- Info sheets



Documentation

- User guide
- Quick start guide
- FAQ's



Available in the following languages: US English - UK English - French - German - Italian - Spanish LA - Brazilian Portuguese - Japanese - Chinese.



Hardware help portal

<https://help.fieldsystems.trimble.com/portal/home.htm>



<https://help.spectrageospatial.com/portal/home.htm>



Online self-help includes:

- Quick start guide
- User manual
- FAQs
- Support bulletins

Trimble Field Systems Help Portal

Hardware Software Product A-Z

Trimble Field Systems Help Portal

Welcome to the Trimble Field Systems Help Portal. This is the central location for information about using your Trimble field system products, including field, office and cloud software, as well as data collectors and GNSS receiver system hardware.

Find help for your product using the menus above.



SPECTRA GEOSPATIAL* HELP PORTAL

GNSS Optical Software Data collectors

Spectra Geospatial Help Portal

Welcome to the Spectra Geospatial Help Portal. This is the central location for information about using your Spectra Geospatial products, including field, office and cloud software, as well as data collectors and GNSS receiver system hardware.

Find help for your product using the menus above.







Trimble Mobile Computing Solutions OS and firmware download portal

<https://mcs.trimble.com/>

- List of latest OS versions and link to release notes

| Trimble SPECTRA GEOSPATIAL OS, BIOS & Firmware Download Portal | | | | |
|--|------------------------------|---|---|---|
| Downloads for Handhelds, Tablets, Controllers/Data Collectors and Empower™ modules | | | | June 30th, 2025 02:25 UTC |
| Data Collectors | | | | |
| Product | Component | Latest Version | Release Notes | Notes |
| TSC7 / Ranger 7  | BIOS | TSC7/Ranger 7 BIOS XZ7/HB15 Installer | XZ7: • Enhanced Audio Support • Updated BIOS Product Identification Information HB15: • TSC7 v2 initial release | * Installation Instructions (pdf) |
| | Windows 10 Operating System | TSC7/Ranger 7 22H2/1TSC 2021 Production OS Image (11 GB)-June 2025 Update | * Based on Windows 10 22H2 or Windows 10 LTSC 2021 • Security updates to May 2025 | * Installation Instructions (pdf) |
| | TSC7/Ranger 7 Driver Package | TSC7/Ranger 7 22H2 Driver Package (1.2 GB) | Suitable for installing individual drivers on to a running device Can also be used for custom OS creation Not required by most users | |
| TSC5 / Ranger 5  | Android 13 Operating System | OS v03.05.02 is the latest TSC5/Ranger 5 Operating System. Updates are downloaded automatically to the device via the internet. A notification will be displayed when a new update is available to install. There is no OS download file for Android devices. | * Security enhancements • Security Patch Level: 1 Apr 2025 • Android Security Bulletin: April 2025 | Android Security Updates provided until Q4 2026 |



Post release

Driving continued growth





Post release | More to follow

We will continue to update you via Trimble newsletters as we create and share assets.

- **Dealer activation kit:** Level Up Your Experience: Introducing the data collector activation kit
- **Social media:** Ongoing sharing of information.
- **Technical blogs:** A deeper dive into the technologies
- **Trimble events & PR:** Showcasing at key industry events.
- **Customer stories:** Let us know if you have an interesting customer use case.

Contact us with suggestions on what else would benefit you to support the release.



Events

The latest product portfolio will be on display at

- [Intergeo](#) (7-9 October in Frankfurt)
- [Trimble Dimensions User Conference](#) (10-12 November in Las Vegas)

| Trimble Dimensions Sessions | | |
|--|--|---|
| Trimble Data Collectors: Connecting the field to the office [G-1146] Monday, November 10 1:30pm PST | Introducing Trimble's Newest survey controllers [G-1358] Tuesday, November 11 3pm PST | Android enhanced productivity for Trimble data collectors [G-1360] Wednesday, November 12 at 9am PST |

For Questions
or Feedback
please contact:

TSC710 / Ranger 710:
Connie.Colligan@trimble.com

T110:
Jeff.Siler@trimble.com

© 2025 Trimble, Inc - All Rights Reserved

תודה
KIITOS
BEDANKT
Teşekkürler
DANKIE
Ευχαριστώ
Спасибо
GRACIAS
SALAMAT
VIELEN DANK
KÖSZÖNJÜK
गुहाडा यँनदाद
G
R
A
Z
I
TACK
E Dziêkujemy
VINAKA
DЯKУЄMО
شكراً
Obrigado
शुक्रिया
AČIŮ
БЛАГОДАРИМ ВИ
HVALA VAM
TAKK
Ďakujem vám
mercì
நன்றி
HVALA VAM
DIOLCH
MULTUMIM
Xin Cảm Ơn
감사합니다
ありがとうございます