

Trimble Geospatial Accessories



CATALOG

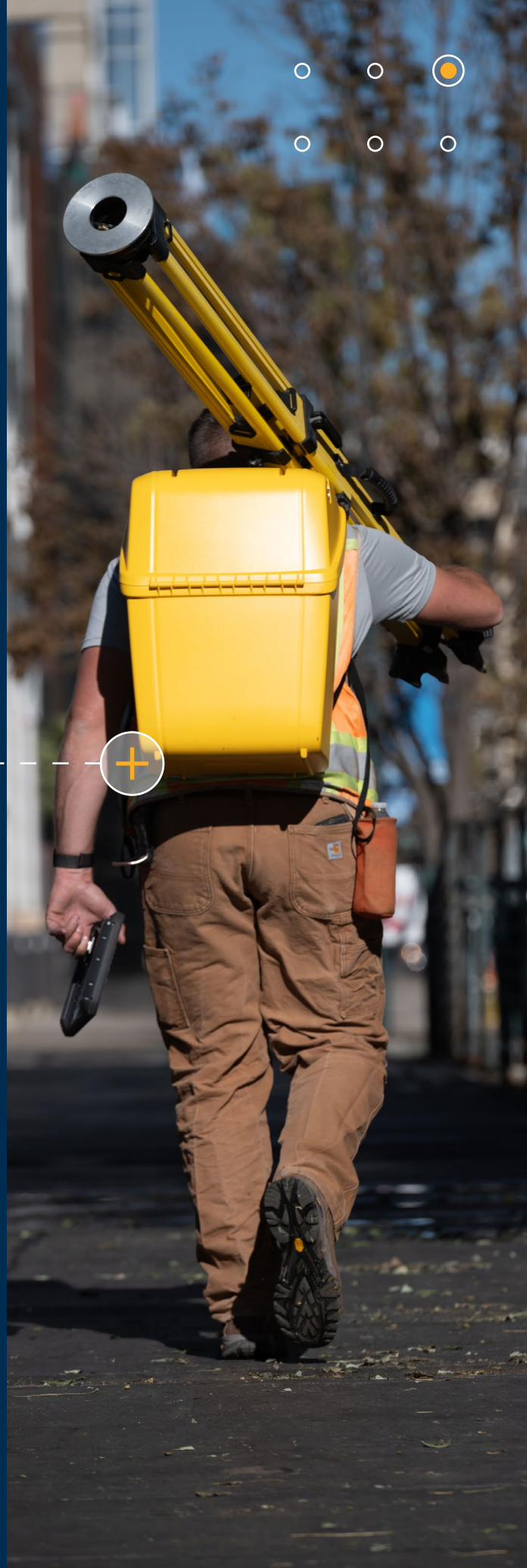


Table of contents



Common Accessories

Range Poles, Tripods and Tribrachs	3
Range Poles	4
Tripods.....	8
Tribrachs.....	13
Leveling Staffs.....	16
Prisms, Targets and Spheres	22
Prisms.....	23
Targets.....	26
Spheres.....	29
Batteries and Chargers	33
Backpacks, Pouches and Cases	39
Backpacks	40
Pouches (Bags).....	44
Cases.....	46

Application Specific

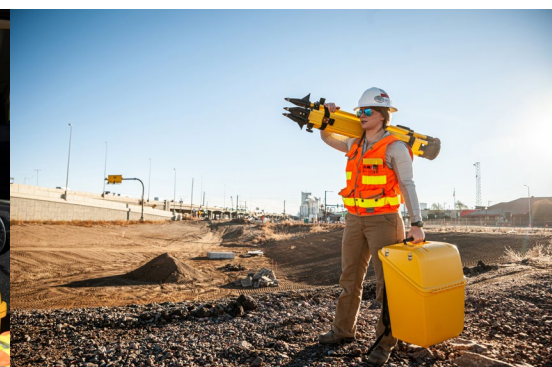
Trimble® Catalyst™ DA2 Receiver	53
Base Stations and Data Radios	61
Monitoring.....	71
Data Collectors.....	85
Trimble Empower Modules.....	116

Other Accessories

S-Series.....	121
Sentinel	123
C-Series.....	125
Cables	128
Miscellaneous.....	134

For further information on the Trimble Geospatial range of accessories contact your local Trimble Authorized Distributor.

Catalog Version: Rev K - Updated September 2025.



Range Poles, Tripods and Tribrachs





Range Poles



Range Poles

Range Poles, Tripods, Tribrachs and Leveling Staffs

2.6 m Telescopic Range Pole



Markings offset by Trimble® Standard target height (135 mm). Carbon fiber and aluminum telescopic range pole (2.6 meter).

P/N: 51003007

2.5 m Telescopic Range Pole



Markings read to the top of the pole. Carbon fiber and aluminum telescopic range pole (2.5 meter).

P/N: 43169-30

2 m Carbon Fiber Range Pole



Fixed height, two part, carbon fiber range pole (2 meter).

P/N: 43169-10

2 m Aluminum Pole with flat-top for Trimble Catalyst push-fit system



A lower cost rod with a flat mounting for the Trimble Catalyst™ DA1 or DA2 push-fit mount.

P/N: 109219

Range Poles

Range Poles, Tripods, Tribrachs and Leveling Staffs

1.3 m Carbon Fiber Monopole



Telescopic carbon fiber monopole (1.3 m) with spring-loaded metal tip.

P/N: 88142-02

2.5 m Telescopic Range Pole with Bipod



Markings read to the top of the pole. Carbon fiber and aluminum telescopic range pole (2.5 meter), with bipod and carry bag.

P/N: 43169-20

2 m Carbon Fiber Range Pole with Bipod



Fixed height two part, 2 meter, carbon fiber range pole with bipod and carry bag.

P/N: 43169-00

Bipod for Range Pole



Yellow bipod for use with Trimble range poles.

P/N: 571126286

Range Poles

Range Poles, Tripods, Tribrachs and Leveling Staffs

Quick Release Adapter



0.05 m quick release adapter for quick attachment and release. Compatible with Trimble R980, R12i, R12 and R10® GNSS receivers.

P/N: 89845-00

Range Pole Topo Shoe, Wide Base



Topo shoe for use instead of standard tips on GNSS rover rods for topographic surveys, with wide base for use on soft ground.

P/N: 55130-00-GEO



Tripods



Tripods

Range Poles, Tripods, Tribachs and Leveling Staffs

Tri-Max Dual Clamp Tripod



Dual clamp Tri-Max tripod with Trimble logos.

- Retracted height: 44"
- Extended height: 71"
- Weight: 16.4 lbs
- 5/8 x 11 thread size

P/N: 90553-TR-SUR

Heavy Duty Wooden Tripod



Wooden tripod with leg screw clamping system.

P/N: 571126275

Fixed Legs Wooden Tripod



Wooden tripod with fixed legs for first order levelling, for digital levels.

P/N: 7072550000000

Tripods

Range Poles, Tripods, Tribachs and Leveling Staffs

Carbon Fiber Tripod for X-Series Scanners



Lightweight carbon fiber tripod for X-Series 3D laser scanners for improved mobility. Includes flat rubber and conical or spiked feet for stability on any surface, and a padded carrying case for easy transport.

- Weight: 5.9 lbs (2.68 kg)
- Min. height: 21.25" (540 mm)
- Max height: 62.5" (1590 mm)
- Pack length: 23" (584 mm)

P/N: 90574-TR

Gitzo Series 5 Tripod



Gitzo Series 5 tripod with 5/8 x 11 head, heavy duty Gitzo tripod for Trimble TX6 and TX8 scanners. Lightweight carbon fiber. Rubber and spiked feet for stability on any surface. Improved mobility, easy transport.

- Weight: 6.2 lbs (2.8 kg)
- Min. height: 3.9" (99.06 mm)
- Max. height: 61.4" (1559.6 mm)
- Pack length: 26.8" (680.72 mm)

P/N: 90572-TR

Tripods

Range Poles, Tripods, Tribachs and Leveling Staffs

Quick Release Adapter for X-Series Scanners



Quick release adapter connects directly to the base of the Trimble X7 and X9 3D laser scanners and includes a customer head for the X-Series carbon fiber tripod (P/N 90574-TR) for quick attachment and release.

P/N: 90574-QR

Tripod Clip with Mounting Screws - R750 (Survey)



Ships with survey standard receiver kit (R750-101-x0).
Compatible with the Trimble R750 receiver.

P/N: 51702-00-SUR

Tripods

Range Poles, Tripods, Tribrachs and Leveling Staffs

Base Station Extension



0.15 m with height measurement lever.
Compatible with Trimble R980, R12i, R12, R10, R9s, R8s and R2
GNSS receivers.

P/N: 89846-00

Pole Extension



25 cm pole extension.
Compatible with Trimble R980, R12i, R12, R10, R750, R9s, R8s and R2
GNSS receivers.

P/N: 52607

Pole Segment



1 foot. Compatible with Trimble R980, R12i, R12, R10, R9s, R8s, R580
and R2 GNSS receivers.

P/N: 31165



Tribrachs



For more details browse our
Trimble Geospatial Tribrachs Spec Sheet

[SPEC SHEET](#)

Tibrachs

Range Poles, Tripods, Tibrachs and Leveling Staffs

Tibrach with Bi-Direction Optical Plummet



Replacement tibrach for Trimble SX Series.

P/N: 70600007

Tibrach without Optical Plummet



Replacement tibrach for Trimble S Series, SPS, RTS and Ri instruments, and Traverse Kit.

P/N: 78607007

Tibrach with Optical Plummet



For prisms, targets or GNSS setups.

P/N: 58002007

Tibrachs

Range Poles, Tripods, Tibrachs and Leveling Staffs

Adapter - Tibrach to 5/8" with Removable Center



Compatible with Trimble R980, R12i, R12, R10, R750, R9s, R8s and R2 GNSS receivers.

P/N: 12180



Leveling Staffs



Leveling Staffs

Range Poles, Tripods, Tribrachs and Leveling Staffs

Leveling Staff LD 05



Staff, aluminum rod LD 05, 0.5 m, code-graduation 3-side.

P/N: 7073159010000

Leveling Staff BD 05



Invar tape BD 05 0,5 m with bar code.

P/N: 7073059010000

Leveling Staff FD 10



Foil strip FD 10, 1 m with bar code, zero point, selfsticking.

P/N: 7073099010000

Leveling Staff LD 11



Invar rod LD 11, 1 m, code-graduation.

P/N: 7073119410000

Leveling Staffs

Range Poles, Tripods, Tribrachs and Leveling Staffs

Leveling Staff LD 21



Aluminum rod LD 21,
1 m, code-, E- and
mm-graduation.

P/N: 7073219010000

Leveling Staff LD 12



Invar rod LD 12, 2 m,
code-graduation.

P/N: 7073129410000

Leveling Staff LD 12/b



Invar rod LD 12/b 2 m,
code-graduation, with
wide staff base.

P/N:7073129510000

Leveling Staff LD 13



Invar rod LD 13, 3 m,
code-graduation.

P/N: 7073139410000

Leveling Staffs

Range Poles, Tripods, Tribrachs and Leveling Staffs

Leveling Staff LD 13/b



Invar rod LD 13/b, 3 m,
code-graduation, with
wide staff base.

P/N: 7073139510000

Leveling Staff LD 13 w/ certificate



Invar rod LD 13, 3 m,
code-graduation, with
certificate (incl. factor
extension for the rod).

P/N: 7073139110000

Leveling Staffs

Range Poles, Tripods, Tribrachs and Leveling Staffs

Leveling Staff LD 24



Leveling rod LD 24,
4/1 m, foldable, code-
and E-graduation.

P/N: 7073249010000

Leveling Staff TD 24



Leveling telescopic rod
TD 24, 4/1 m, code
and E-graduation.

P/N: 7073369010000

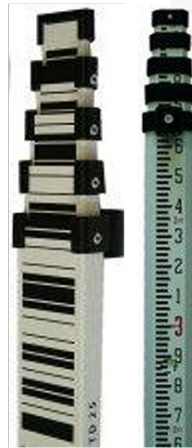
Leveling Staff TD 25



Leveling telescopic rod
TD 25, 5/1 m, code and
E-graduation.

P/N:7073369020000

Leveling Staff TD 25/16ft



Leveling telescopic
rod TD25, 16 ft, 5/1 m,
code and
ft-graduation.

P/N: 7073369025000

Leveling Staffs

Range Poles, Tripods, Tribrachs and Leveling Staffs

Leveling Staff Fiber telescopic



Fiber telescopic rod 5 m,
code-graduation.

P/N: 7077770187000

Staff Holder



Telescopic tripod 3 m
for LD 13.

P/N: 7073139910000

Transport Case



Transport case (metal and
plastic) for two LD 13 or
LD 13 + telescopic tripod.
(Digital levels).

P/N: 78520017

Prisms, Targets and Spheres



Trimble Geospatial have a range of prisms, targets and spheres to cover a variety of scanning and optical applications. (For specific accessories for monitoring and tunneling applications see Section 7).



Prisms



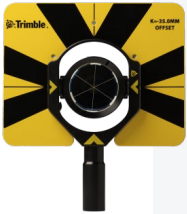
 For more details browse our Trimble Geospatial Targets Spec Sheet

[SPEC SHEET](#)

Prisms

Prisms, Targets and Spheres

Traverse Prism



Traverse prism with sighting target. Trimble standard target height 135 mm.

- Prism constant: -35 mm

P/N: 58026020

Dual Notch Prism Base



Prism base containing built in optical plummet, plate bubble for accurate leveling and lever arm for accurate height measurements to bottom notch for both S-series and SX10 total stations.

P/N: 78608019

Traverse Kit



Contains case, traverse prism, prism base (with level and optical plummets) and tribrach (with no plummet). The prism base with level has a lever arm with bottom notch measurement that enables accurate height measurements and removes the need to remeasure when pairing with an S-series or SX instruments.

PN: SLSU-S2020

[SPEC SHEET](#)

Mini Prism Kit



Contains 1" (25.4 mm) prism with sighting arrows, 4x 300 mm sectional poles and 50 mm points, mini-pole/pole adapter, and padded carry case.

- Prism constant: -17 mm

P/N: 187311

[SPEC SHEET](#)

Mini 360 Prism



This mini 360 prism is a 0.5" (12.7 mm) surveying prism with a built-in leveling bubble and 5/8" thread.

- Prism constant: +2 mm

P/N: 571204312

Prisms

Prisms, Targets and Spheres

Trimble 360 Prism



This 360 prism is compatible with all optical instruments and also supports all GNSS receivers for integrated surveying with a built-in 5/8 th thread. A levelling bubble is also included, built into the 5/8th thread. Perpendicular markings on the prism cap simplify offset measurements. Includes height adapter to Trimble standard target height (135 mm). Height adapter is used in conjunction with the telescoping rod.

- Prism constant: +2 mm.
- Integrated survey offset of 34 mm.

P/N: 58020002

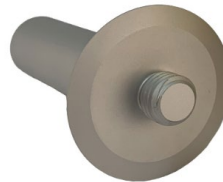
Trimble 360 Prism Replacement Top Cap



Replacement top cap only for the Trimble 360 prism.

P/N: 59050002

Trimble 360 Prism Replacement Height Adapter



Replacement height adapter only for the Trimble 360 prism.

P/N: 59054002

Mini Rod



Mini rod extension for 360 Prism or Target ID including 0.040 m 5/8 thread adapter. Total height of mini rod 0.115 m.

P/N: 59009025

360 Prism Rod



Adapter for Trimble VX & S-series 360 prism, so prism is at Trimble standard target height (135 mm).

P/N: 59011025



Targets



For more details browse our Trimble Geospatial Prisms & Targets Spec Sheet

[SPEC SHEET](#)

Targets

Prisms, Targets and Spheres

MultiTrack Target



Maintain target lock with confidence using Trimble Active Tracking technology and selecting from 8 different channels. This target can also work as a passive 360 prism. Includes 7.4 Li-Ion battery. Trimble standard target height 135 mm.

- Prism constant: +10 mm

P/N: MT1000

Active Track 360 Target



Maintain target lock with confidence using Trimble Active Tracking technology and selecting from 8 different channels. Target has 360 foil and a single ring of LEDs for Active Tracking. Includes 7.4 Li-Ion battery. Trimble standard target height 135 mm.

- Prism constant: +22 mm

P/N: AT360

GPS Holder for Multitrack Target



Holder for external GPS sensor. Attaches on top of MT1000 target via 5/8 th thread mount.

P/N: 58015013

Targets

Prisms, Targets and Spheres

Adhesive B&W Checker Targets



Pack of 10 adhesive black & white checker targets. Only suitable for manual aiming.

P/N: 28740034

Reflective Foil Target Set: 5 Piece Large-Size



Contains 5 pieces of 60*60mm reflective foil target stickers with wider sighting marks. Only suitable for manual aiming.

- Prism constant: 0 mm

P/N: 58028007

Target ID Module



Pair either the VX & S-series 360 prism or the R10 360 prism with the Target ID module to ensure you find and measure the correct target using Trimble Active Tracking technology. Includes mini rod.

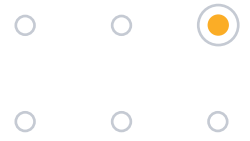
P/N: 58009009

Laser Adjustment Plate—S-Series



Target for checking and adjusting the alignment of the laser pointer on an S-series instrument.

P/N: 57013007



Spheres



Spheres

Prisms, Targets and Spheres

100 mm Single Sphere



- 100 mm OD lightweight aluminum sphere
- Precision design, allowable deviation < 1 mm
- Painted non-glare
- Female 1/4 x 20 threaded mounting
- Center height is 49 mm
- Weight: 0.60 lb (0.27 kg)

P/N: 6703-001-TR

100 mm Sphere Magnet



- Stainless steel
- 1/4 x 20 stud
- Chrome-plated steel cup
- 2.03-inch OD steel cup
- Grade 8 ceramic magnet
- 40 pounds of pull force
- Weight 0.20 lb (0.09 kg)

P/N: 6703-002-TR

230 mm Single Sphere



- 230 mm OD lightweight aluminum sphere
- Accuracy < 2 mm
- Painted non-glare white
- Female 5/8 x 11 threaded mounting
- Center height is 114 mm (from bottom flat)
- Weight: 2.7 lb (1.22 kg)

P/N: 6704-001-TR

Spheres

Prisms, Targets and Spheres

100 mm Sphere Kit—10 Pack



10 x 100 mm scanner spheres in a hard case.

- Includes 10 magnets with 1/4 x 20 studs
- Width: 19 inches (48.3 cm)
- Height: 9 inches (22.9 cm)
- Weight: 22 lb (10 kg)

P/N: 6703-11-OGC

230 mm Sphere Kit—3 Pack



3 x 230 mm scanning spheres in a hard case.

- Airline approved shipping case
- Weight: 17.60 lb (7.98 kg)

P/N: 6704-10-TR

100 mm Sphere Kit—6 Pack



6 x 100 mm scanner spheres in a soft case.

- Includes 6 magnets with 1/4 x 20 studs
- Stow-able straps (cases can connect together)
- 1000 D Cordura with 2-inch padded foam
- Carrying handle
- Length: 16 inches (40.64 cm)
- Width: 11 inches (27.94 cm)
- Height: 8 inches (20.32 cm)
- Weight: 6.60 lb (3.00 kg)

P/N: 6703-20-TR

Spheres

Prisms, Targets and Spheres

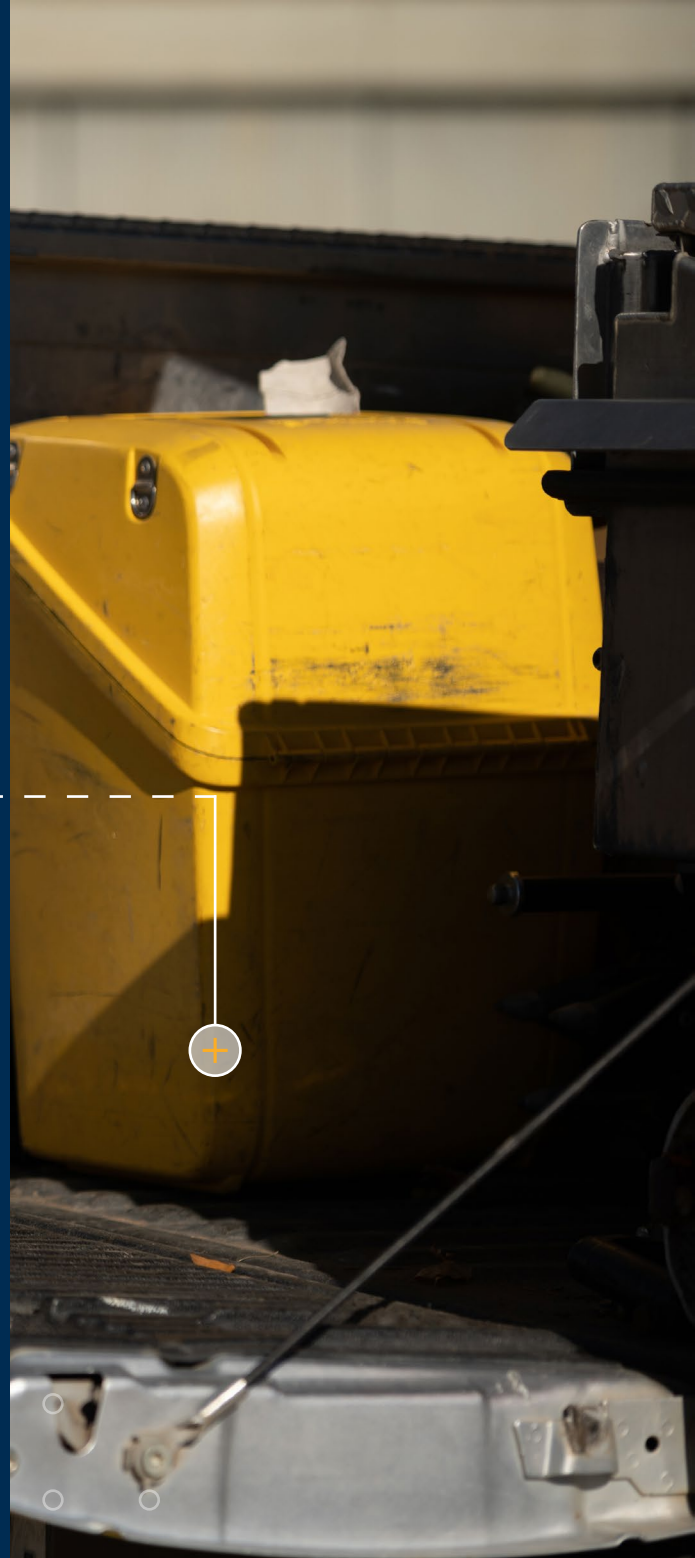
265 mm Height Adapter for MT1000



- Male and female 5/8 x 11 threads
- Physical height: 96 mm
- Center height: 265 mm with Trimble MT1000 and Tribrach Adapter (2070-00-TR)
- Weight: 0.30 lb (0.14 kg)

P/N: 6704-005-TR

Batteries and Chargers



Batteries and Chargers

Batteries and Chargers

Trimble Instrument Battery (10.8 V, 6400 mAh)



Lithium-ion battery for use with Trimble SX12, SX10, X9, X7, and S-Series instruments.

P/N: 99511-30

Rechargeable Battery (7.4 V, 3700 mAh)



Lithium-ion battery for use with Trimble R980, R12i, R12 and R10 GNSS receivers.

P/N: 176767

Rechargeable Battery (7.27V, 3350 mAh)



Lithium-ion battery for use with Trimble R780-2, R780, R580 and R2 GNSS receivers and with MT1000 and AT360 targets, and DiNi levels.

P/N: 192670-02

Battery Slot Insert for Dual Battery Charger



For use with Trimble R980, R12i, R12 and R10 GNSS receivers. Qty of 2

P/N: 109001-00

Batteries and Chargers

Batteries and Chargers

Dual Slot Battery Charger



Dual slot battery charger (109000) with power supply and cord for your Trimble optical instrument batteries (99511-30) and Trimble GNSS receiver batteries (176767 and 192670-XX).

P/N: 101070-00-XX*

*XX denotes power cord region:
 01 = North America 09 = Taiwan
 02 = Japan 10 = China
 04 = Europe 12 = Australia
 08 = UK

Power Supply and Cord for Dual Slot Battery Charger



Replacement power supply and regional specific power cord for the Trimble dual slot battery charger.

P/N: 101071-00-XX*

*XX denotes power cord region:
 01 = North America 09 = Taiwan
 02 = Japan 10 = China
 04 = Europe 12 = Australia
 08 = UK

12V Vehicle Adapter for Dual Slot Battery Charger



Power supply adapter for vehicle cigarette socket, compatible with Trimble dual slot battery chargers.

P/N: 89844-00

Batteries and Chargers

Batteries and Chargers

3 Bay Battery Holder



External 3 bay battery holder for use with Trimble SX10 and S-series instruments. Cable 73838019 is sold separately and required for connection to instruments.

P/N: 59369-00

Robotic Power Kit



Case for dual slot chargers (58386001), 3 instrument batteries and 3 bay battery holder + cable.
Note: chargers sold separately.

P/N: SLSU-S2018-3

Indoor Instrument Power Supply



12 V power supply for the Trimble SX and S Series Instruments. For indoor use only. Worldwide variant comes with adapters for worldwide use.

P/N: 58027007-XX*

*XX denoted power cord region (00 = Worldwide, 02 = Japan)

Battery, Lead Gel, 6 Ah with 2.4 m Cable and Lemo Connector



External battery for use with Trimble R980, R12i, R12, R750, and R8s receivers.

P/N: 32364-10

Batteries and Chargers

Batteries and Chargers

Instrument Battery (3.6 V, 6700 mAh)



Lithium Ion battery for Trimble C-series instruments

P/N: 67201-01-TNL

C-Series Dual Battery Charger



Charger for C Series batteries. Power supply sold separately (PN: 67901-09-GEO).

P/N: HQJ27000-TNL

Power Supply for C-Series Battery Charger



Power supply for dual battery charger.

P/N: 67901-09-GEO

Single-Slot Battery Charger

Single-slot battery charger with USB-C for mechanical total stations

P/N: HQJ50000-TNL

Batteries and Chargers

Batteries and Chargers

Trimble TX Battery



10.8 V, 8700 mAh Li-Ion battery for Trimble TX6 and TX8 3D laser scanners.

P/N: 23701034

Dual Charger for TX Battery



Dual charger for battery 23701034 used with Trimble TX6 and TX8 3D laser scanners.

P/N: 23702034

Trimble TX Battery Kit



Battery kit for Trimble TX6 and TX8 3D laser scanners. Includes 4 x Li-Ion batteries, dual charger and power supply in transportation case.

P/N: 28730034

Backpacks, Pouches and Cases



Trimble Geospatial has a range of hard cases, backpacks and pouches to protect your instruments against the elements and make them easier to store and transport.

Backpacks



Backpacks

Backpacks, Pouches and Cases

SX-Series Backpack



Softshell backpack for Trimble SX-series instruments. Main compartment with foam insert for:

- Compatible for the Halow / WiFi edition of the SX12 total station.
- Three instrument batteries
- Trimble 360 prism
- Large front pocket for tablet style data collector
- Side pockets for additional storage

P/N: SX-BP-02

Trimble S-Series Backpack



Softshell backpack for Trimble S-series and VX instruments. Main compartment with foam insert for all Trimble S-series and VX instruments.

- Large front pocket for data collector
- Small front pocket for small item storage
- Side pockets for additional storage
- Webbing system on both sides and bottom of backpack for securing additional equipment

P/N: S SERIES-BP-01

Backpacks

Backpacks, Pouches and Cases

Trimble X-Series Backpack



Backpack for Trimble X7 and X9 3D scanning systems to improve mobility in the field and for easy transport.

- Dimensions 17" x 13" x 10" (432 mm x 330 mm x 254 mm)
- Weight: 3.3 lbs (1.5 kg)
- Exterior material: 1680D ballistic nylon
- Custom foam insert for Trimble X7 and X9 3D scanning systems, 3 batteries and charger.
- Exterior pockets for tablet and miscellaneous accessories
- Straps to secure tripod for hands free climbing
- Airline carry-on compatible
- Height: 9 inches (22.9 cm)
- Weight: 22.00 lb (10.00 kg)

P/N: X7-BP-01

Trimble TX Backpack



Backpack for Trimble TX6 and TX8 3D laser scanners to improve mobility in the field.

- Dimensions 14.5" x 19" x 11" (368.3 mm x 482.6 mm x 279.4 mm)
- Weight: 5.4 lbs (2.45 kg)
- Exterior material: 1680 D ballistic nylon
- Custom foam insert: 2 lb closed cell foam
- Exterior pockets to store miscellaneous accessories
- Straps to secure tripod for hands free climbing

P/N: TX-BP-01

Backpacks

Backpacks, Pouches and Cases

Backpack with Rigid Frame for R2 Receiver



Backpack with rigid frame for the Trimble R580 and R2 GNSS receiver.

P/N: 39870

Pouches



Pouches

Backpacks, Pouches and Cases

Pouch for Base / PP Kit



Pouch for Base / PP Kit (for Trimble R980, R12i, R12 and R10 GNSS receivers).

P/N: 89859-00

Pouch for Remote UHF Radio Antenna



Pouch for Remote UHF radio antenna (for Trimble R980, R12i, R12 and R10 GNSS receivers).

P/N: 89860-00

Trimble Black Bag



Padded bag with two adjustable dividers with hook and loop fasteners, suitable for carrying a range of products including GNSS receivers and other accessories.

P/N: 114084-GEO

2.0 m Range Pole Bag



Lightly padded bag designed to carry a 2.0 m two-section GNSS rod.

P/N: 114088-GEO

Cases



Cases

Backpacks, Pouches and Cases

Trimble GNSS Transport Case



Transport case for a Trimble R980, R780 or R580 GNSS receiver and a Trimble TSC510 or TSC7/TSC5 controller.

P/N: 189200

Trimble Optical Accessory Case



Transport case for a MT1000 or AT360 smart target or 360 prism and a Trimble TSC510 or TSC7/TSC5 controller.

P/N: 189360

Transport Case—Trimble R780 GNSS Smart Antenna



Transport case for Trimble R780 smart antenna.

P/N: 55100-31-GEO

Transport Case—Trimble R580 and R2 GNSS Receivers



Transport case for a single Trimble R580 or R2 GNSS receiver.

P/N: 106170-00

Cases

Backpacks, Pouches and Cases

Transport Case for TSC7 and Receiver



Transport case for the Trimble TSC7 controller and receiver (Trimble R980, R12i, R12, R10, R8s R580 and or R2 GNSS receivers).

P/N: 171082-00

Transport Case—Trimble R750



Ships with survey standard receiver kit (R750-101-x0).

P/N: 101750-00-GEO

Transport Case—Trimble R12



Transport case for Trimble R980, R12i and R12 GNSS receivers and Trimble TSC7 and TSC5 controllers and T100 tablet.

P/N: 89873-00

Transport Case—Single Receiver



Transport case for a single Trimble R8s GNSS receiver.

P/N: 101061-00

Cases

Backpacks, Pouches and Cases

Hard Shell Carrying Case—TDL450B



Sized to hold the TDL450B radio with or without the 129681-20 fan tray and the data and power cables.

P/N: 129681-75

Cases

Backpacks, Pouches and Cases

TSC7 Controller Case



Hard case for the Trimble TSC7 controller and accessories including 360 prism case. Contains spaces for:

- Trimble TSC7 controller, pole bracket, power cable, dual slot battery charger and 2 spare batteries
- 2 x dual slot chargers + power cables
- Trimble 360 Prism (MT1000, AT360, R10 360 or VX & S-series 360)
- 1 x MT1000/R-series receiver battery
- 2 x total station batteries
- 2 x spare antenna slots
- Outer case dimensions: 18.36" x 13.82" x 11.26" (466 mm x 351 mm x 286 mm)

P/N: 121360-01-1

S Series Instrument Case



Transport case for all Trimble S-series instruments. Contains backpack straps for extra transportation versatility.

P/N: 58080010

SX Instrument Case



Transport case for Trimble SX instruments. Contains backpack straps for extra transportation versatility.

P/N: 58045032

Cases

Backpacks, Pouches and Cases

Traverse Kit Case



Transport case for the Trimble traverse prism, base with level and tribrach.

P/N: 58395020-10

TCU Robotic Holder Case



Case for the TCU robotic holder and associated accessories.

P/N: RH-CASE-10

Dual Slot Battery Charger Case



Case for holding 2 x dual slot chargers, 4 batteries, 3 battery external holder and associated cables.

P/N: 58386001

DiNi Level Case



Transport case for the Trimble DiNi® level. Compatible with both 0.3 mm and 0.7 mm instruments.

P/N: 78010017

Cases

Backpacks, Pouches and Cases

Trimble S3 Case Replacement Straps



Replacement straps for Trimble S3 total station transport case.

P/N: 58007010

SX10 and S Series Case Replacement Straps



Replacement straps for the Trimble SX10, VX and S-series instrument transport case, (excluding Trimble S3 total stations).

P/N: 59052025

Trimble Catalyst DA2 Receiver



Whether mounted on a survey pole or in a custom backpack our range of Trimble Catalyst DA2 receiver accessories make your DA2 easy to carry and stow while supporting your mapping and field data collection workflows.

Trimble Catalyst DA2 Receiver

DA1/DA2 USB cable—MicroB to Type-C—1.2 m



Optional 1.2 m cable for the DA1/DA2. Ends with a USB Type C connector. Provides data communications between the DA1 and Android™ devices. Can also be used for powering the Trimble Catalyst DA1/DA2 receiver via USB-C power-delivery equipped power banks, phones and tablets.

P/N: 128404-00

DA1/DA2 USB cable—MicroB to Type-C adapter—15 cm



Replacement adaptor cable fits the microB > microB cable (110961-12) and ends with USB-C to power the Trimble Catalyst DA1/DA2 receiver from USB-C power-delivery power banks, phones and tablets.

P/N: 114199

DA1/DA2 USB cable—MicroB to MicroB—1.2 m



Replacement/optional 1.2 m cable for the Trimble Catalyst DA1/DA2 receiver. Ends with a USB microB connector. Provides data communications between the Trimble DA1 and Android devices. Can also be used for powering the Trimble Catalyst DA1/DA2 receiver via Android devices that support power-delivery over USB On-the-Go (USB OTG).

P/N: 110961-12

Trimble Catalyst DA2 Receiver

DA2 USB cable—MicroB to Type-A—30 cm



Replacement/spare for the standard USB cable for connecting Trimble Catalyst DA2 receiver to USB-A power supplies.

P/N: 118615

DA1/DA2 Mounting Accessory Kit



Kit contains replacement parts for the standard antenna push-fit mount components and push-fit 5/8-11 thread pole adapter that come standard with the Trimble Catalyst DA1 and DA2 receivers. The kit also includes push-fit 1/4" thread camera tripod adapter, a locking-fit 5/8-11 thread pole mount adapter, and a tall 5/8-11 thread vehicle mount adapter.

P/N: 114095

Nitecore NPB1 Power Bank (5000 mAH)



The Nitecore NPB1 is a rugged power bank (IP68 rated, waterproof up to 2 m, and with 1 m of drop resistance). mAh Li-Ion.

P/N: 129461-00

Trimble Catalyst DA2 Receiver

Backpack



Trimble branded backpack with rigid frame and mounting thread for the 1-foot pole segment (31165) or the 5/8 -11 adapter (included in the Trimble Catalyst DA1/DA2 receiver packout).

P/N: 39870

1 Foot Pole Segment



1 foot (30 cm) pole segment to be used on the Backpack (39870) to elevate the Trimble Catalyst DA1/DA2 receiver.

P/N: 31165

2 m Aluminum Pole with flat-top for Catalyst push-fit system



A lower cost rod with a flat mounting for the Trimble Catalyst DA1 or DA2 push-fit mount.

P/N: 109219

Trimble Catalyst DA2 Receiver

Pouch, Trimble Catalyst



Fabric pouch for the the Trimble Catalyst DA1/DA2 receiver.
Part of the Trimble DA1 packout.

P/N: 109218

DA2 Standard Accessory Kit



Bagged set of replacement standard accessories for Trimble Catalyst DA2 receiver. Contains the adapter piece between Trimble DA2 receiver and 5/8-11 thread pole accessories, and a mounting kit for single cell USB power banks with 2 elastic rubber straps.

P/N: 120523

Trimble Catalyst DA2 Receiver

Catalyst GNSS Antenna Handle—Packout



Contains the handle, handle battery door, wrist lanyard and 1x steel mount plate.

P/N: 128433-00

Antenna Handle Mount Plate



Steel mount plate with adhesive backing to connect a handheld or tablet device to the magnets on the handle. Purchase as a replacement or if you want to use the handle on more than one device or multiple locations on the same device.

P/N: 124721-00

Antenna Handle Battery Door



Replacement battery cavity door of the handle available as a spare part in case the part is lost or damaged.

P/N: 124748-00

Trimble HPS2 Handle

HPS2 Handle—Packout



Contains Trimble HPS2 handle with integrated Trimble DA2 GNSS receiver, sunshade, pole mount, 2 batteries, USB battery charger, wrist strap, 2 mounting plates, all inside of a softshell carry case.

P/N: 121701-10-GEO

HPS2 Mount Plate



Steel mount plate with adhesive backing to connect a phone to the magnets on the HPS2 handle. Purchase as a replacement or if you want to use the handle on more than one device or multiple locations on the same device.

P/N: 124721-00

Trimble HPS2 Handle

Battery Charger for HPS2 Handle



Dual slot charger for HPS2 handle batteries.

P/N: 118580-01-GEO



Batteries for HPS2 Handle



Batteries for HPS2 handle, comes as a set of two.

P/N: 118579-01-GEO

Trimble Carbon Fiber Monopole (1.3 m)



Attach this 1.3 m monopole to an HPS2 handle to enhance the accuracy of GNSS points by ensuring precise vertical heights. Connect the HPS2 handle to the monopole using the pole mount that's included with the HPS2 handle.

P/N: 88142-02

Base Stations and Data Radios



GNSS antennas

Base Stations and Data Radios

Zephyr™ 3 Base GNSS Antenna



Compatible with Trimble R750 and R9s GNSS receivers.

P/N: 104661-00

Zephyr 3 Rover GNSS Antenna



Compatible with Trimble R750 and R9s GNSS receivers.

P/N: 104662-00

Zephyr 3 Base GNSS Antenna with 10 m Antenna Cable



Compatible with Trimble R750 and R9s GNSS receivers.

P/N: 104661-50

Zephyr 3 Rover GNSS Antenna with 1.6 m Antenna Cable



Compatible with the Trimble R750 and R9s GNSS receivers.

P/N: 104662-50

Kits

Base Stations and Data Radios

Base Kit



Pouch, 6 Ah battery, charger, base station ext., tape, Y-cable.

Compatible with Trimble R980, R12i, R12 and R10 GNSS receivers.

P/N: 89861-00

Base Kit-Japan



Pouch, 6 Ah battery, charger, base station ext., tape, Y-cable.

Compatible with Trimble R980, R12i, R12 and R10 GNSS receivers.

P/N: 89861-00-JPN

PP Kit



Pouch, 6 Ah battery, charger, base station ext. and tape.

Compatible with Trimble R980, R12i, R12 and R10 GNSS receivers.

P/N: 89862-00

PP Kit-Japan



Pouch, 6 Ah battery, charger, base station ext. and tape.

Compatible with Trimble R980, R12i, R12 and R10 GNSS receivers.

P/N: 89862-00-JPN

Radio antennas

Base Stations and Data Radios

UHF Radio Antenna with SMA Connector



410–470 MHz, 0 dB. z.
Compatible with Trimble R12i, R12 and R10 GNSS receivers.
P/N: 89854-00

UHF Radio Antenna (Survey)



TNC, 395–445 MHz, 6", Whip.
Compatible with Trimble R9s, R8s and R2 GNSS receivers.
P/N: 44085-42-SUR

UHF Radio Antenna (Survey)



TNC, 425–475 MHz, 6", Whip.
Compatible with Trimble R9s, R8s and R2 GNSS receivers.
P/N: 44085-46-SUR

Radio antennas

Base Stations and Data Radios

UHF Radio Antenna (Survey)



TNC, 410–470 MHz, 5", Whip.
Compatible with Trimble R9s, R8s, R780, R580 and R2 GNSS receivers.

P/N: 44085-60-SUR

Remote UHF Radio Antenna (410–430 MHz, 5 dB), 5 m Cable, SMA Connector, Pouch



Remote UHF radio antenna (410–430 MHz, 5 dB), 5 m Cable, SMA connector, pouch.

Compatible with Trimble R12i, R12 and R10 GNSS receivers.

P/N: 89856-00-62

Radio antennas

Base Stations and Data Radios

Remote UHF Radio Antenna (430–450 MHz, 5 dB), 5 m Cable, SMA Connector, Pouch



430–450 MHz, 5 dB.
Compatible with Trimble R12i, R12 and R10 GNSS receivers.
P/N: 89856-00-64

Remote UHF Radio Antenna (450–470 MHz, 5 dB), 5 m Cable, SMA Connector, Pouch



450–470 MHz, 5 dB.
Compatible with Trimble R12i, R12 and R10 GNSS receivers.
P/N: 89856-00-66

Antenna: UHF Radio, RP-TNC, 450/900 MHz, 6", Whip, R750 (Survey)



Ships with survey standard receiver kit (R750-101-60)
Compatible with Trimble R780 and R750 GNSS receivers.
P/N:123588-SUR

Radio antennas

Base Stations and Data Radios

Radio Antenna, 0 db–5 db Whip, 406–430 MHz



Compatible with Trimble R980, R12i, R12, R10, R9s, R8s, R780 and R750 GNSS receivers.

P/N: 24253-42

Radio Antenna, 0 db–5 db Whip, 430–450 MHz (Geospatial)



Compatible with Trimble R980, R12i, R12, R10, R9s, R8s, R780 and R750 GNSS receivers.

P/N: 24253-44-GEO

Radio Antenna, 0 db–5 db Whip, 450–470 MHz (Survey)



Compatible with Trimble R980, R12i, R12, R10, R9s, R8s, R780 and R750 GNSS receivers.

P/N: 24253-46-SUR

Radio antennas

Base Stations and Data Radios

Antenna Whip — Unity Gain 410–430 MHz



Unity gain 410-430 MHz radio antenna.

P/N: 51870-10-30

Antenna Whip — Unity Gain 430–450 MHz



Unity gain 430-450 MHz radio antenna.

P/N: 51870-30-50

Antenna Whip — Unity Gain 450–470 MHz



Unity gain 450-470 MHz radio antenna.

P/N: 51870-50-70

Radio antennas

Base Stations and Data Radios

Radio Antenna Mast Kit



Compatible with Trimble R980, R12i, R12, R780, R10, R8S, R750 and R9s GNSS receivers.

P/N: 44482-00

Trimble R980 450/900 MHz RP-SMA UHF rubber duck antenna



Compatible with Trimble R980 GNSS receiver.

P/N: 129988

Radio Antenna, 5db Whip, 896–940 MHz



Compatible with Trimble R980 GNSS receiver.

P/N: 24253-92-GEO

Radio accessories

Base Stations and Data Radios

TDL450B Tripod Hook

Attaches to the back of the TDL450B radio, equipped with the 129681-20 fan tray or not. Allows an easy attachment point to a tripod.

P/N: 129681-80

TDL450B Fan Tray



Attaches to the back of the TDL450B radio to ensure better cooling when used in hot environments at high power. Can also be used as a wall mount. Compatible with the Hard Shell Carrying Case (129681-75).

P/N: 129681-20

Spare Handle

This Handle will replace a damaged TDL450B handle. Shipped with necessary screws.

P/N: 129681-70

Radio accessories

Base Stations and Data Radios

TDL450B USB Data Cable



Used to connect TDL450B to the USB LEMO port on the GNSS receiver.

P/N: 130916

TDL450B Serial Data Cable



Used to connect TDL450B to the serial/RS-232 LEMO port on the GNSS receiver.

P/N: 130918

TDL450B SAE Power Cable



Used to connect the TDL450B radio to a power source.

P/N: 130919

TDL450B Computer USB Cable



Used to connect the TDL450B radio to a type A USB port on a computer.

P/N: 130927

Monitoring Accessories



Trimble Monitoring has a range of specialized accessories designed to support monitoring applications in all environments.

Communication

Monitoring Accessories

External 2.4GHz Radio



For radio communication to an instrument from a device that does not have a built in radio, such as a computer. It connects via a 12 pin cable connection from the radio to a DB9 connector on the device.

P/N: 58050019

Octohub



Octohub, Communications hub for Settop M1.

P/N: 110471-41

Instrument Mounts and Enclosures

Monitoring Accessories

Pillar Plate



Anodized aluminum plate, diameter 140 mm. The three anchor bolts embed into concrete. A 5/8" thread in the center is used for instrument mounting. A cover plate (PN 1510002-MON) to protect the pillar plate is available. The pillar plates have a groove for the instrument housing.

P/N: 1510001-02-MON

Total Station Security Jail



Security jail cage for protecting total station from theft. Wall bracket not included.

P/N: 310595-MON

Cover for Pillar Plate



A cover plate to protect the pillar plate.

P/N: 1510002-MON

Instrument Mounts and Enclosures

Monitoring Accessories

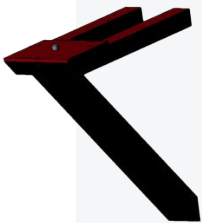
Pillar Plate for Screw Mounting



Anodized aluminum plate diameter 140 mm. The three anchor bolts embed into concrete. A 5/8" thread in the center is used for instrument mounting. A cover plate (PN 1510002-MON) to protect the pillar plate is available. The pillar plates have a groove for the instrument housing.

P/N: 1510011-02-MON

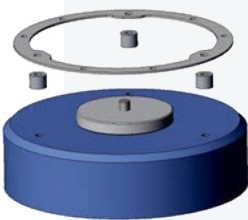
Universal Console 500 mm



Total station mount, wall console made of robust 500 mm steel angle section. The red coating makes it well visible and corrosion-resistant. The ground plate has a 5/8" thread for instrument mounting. The console will be mounted by using the provided high power dowels, or M12 anchors can be used. As an option the 5/8" thread screw can be delivered separately. Size of the ground mounting plate is 200 x 200 x 10 mm. The steel angle section is 500 mm in length.

P/N: 5141250-MON

Adapter for Pillar Mounting



Ring including three spacers for screw mounting on top of a concrete pillar. The pillar diameter has to be larger than 350 mm.

P/N: 5142100-02-MON

Instrument Mounts and Enclosures

Monitoring Accessories

Total Station Instrument Shelter



The housing is designed for use with Trimble S-series instruments. Instruments with a similar tilting axis height can be used as well. The field of sight can be extended by cutting the plastic tube. For mounting, the associated adapter is needed. The shelter is 500 mm at the highest point and 370 mm wide including the top rectangular section. The total station line of sight section in the middle is 150 mm high.

P/N: 5142100-01-MON

Safety Ring with Lock



The safety ring covers the mounting screws of the instrument housing to prevent easy access. The ring comes with a lock for added protection.

P/N: 5142100-10-MON

Monitoring Cabinet Standard Size



Monitoring cabinet to house the Settop M1 with UPS and charger. All accessories of the Settop M1 fit in this small waterproof box for quick access.

P/N: SETTOPM1CABINET-MON-41

Instrument Mounts and Enclosures

Monitoring Accessories

Monitoring Cabinet Extended Size



Monitoring cabinet to house the Settop M1 with UPS and charger. The Extended size cabinet also supports housing up to 2 batteries (depending on model) and a GNSS receiver such as the Trimble NetR9 Ti-M.

P/N: SETTOPM1CAB_BIG-MON

Mike 15 4G External Antenna for Settop M1



The Mike 15 4G antenna is used to extend the range of cellular communications of the Settop M1. This can be used in challenging communication environments or when enclosing the Settop M1 in a monitoring cabinet. This part number includes two antennas.

P/N: 60200-MON

Adapter for Pillar Plate, Pole and Wall Console



Ring with base protection plate for direct mounting at pillar plate with groove (PN 1510011-02-MON), at the pole adapter (PN 5142120-01-MON or PN 5142120-02-MON) or for mounting at the universal wall console (PN 5141250-MON). By mounting at the wall console three threads M8 have to be tapped. As an option the wall console can be ordered ready for installation of the housing. The ring is 330 mm in diameter and has a height of 35 mm.

P/N: 5142110-MON

Instrument Mounts and Enclosures

Monitoring Accessories

Adapter for Pole Mounting, up to 70 mm



Plate with adapter for mounting on a pole.

P/N: 5142120-01-MON

Adapter for Pole Mounting, up to 110 mm



Plate with adapter for mounting on a pole.

P/N: 5142120-02-MON

Adapter for Pillar Plate, Pole and Wall Console



Platform concrete pillar and pillar cover. Ideal for installing Total Stations or GNSS antennas. The set consists of:

- 1 aluminum base (149×10 mm diameter)
- 3 screw brass 5/8 "x 20
- 1 PVC Cover (160×38 mm diameter) with a threaded bore 5/8"

P/N: 890305-MON

Power Supply, Chargers and Cables

Monitoring Accessories

Serial Cable



Serial cable from PC to total station.
Plug the serial connector of the cable into the serial socket of the PC and use the 6 pin Hirose connector with the total station.

P/N: 53002021

Cable—External 2.4 GHz Radio to PC



2.5 m, Y cable, Hirose 12-pin male to Serial 9-pin female and Hirose 6-pin female.

* Connects external 2.4 GHz radio to PC (RS232) for real time monitoring with T4D Control software.

* Requires power supply PN # 78600019-MON.

P/N: 53020019

S-Series Instrument Cable



2.5 m Hirose 6 pin to USB USB cable from PC to total station

Plug the USB connector of the cable into the USB socket of the PC and use the 6 pin Hirose connector with the total station.

Grey instrument to USB communication cable for S-series instruments.

P/N: 73840019

Power Supply, Chargers and Cables

Monitoring Accessories

Cable—0.1m



Cable - 0.1 m, Hirose 6 pin male to Hirose 6 pin female, for auto start up

P/N: 53094001

Cable—Cigarette Lighter to Hirose 6 Pin



3.0 m, Cigarette lighter to Hirose 6 pin.

P/N: 73835019

Cable—Car Battery to Hirose 6 Pin



3.0 m, Car battery (croc clips) to Hirose 6 pin.

P/N: 73836019

S-Series Instrument Cable



2.5 m Hirose 6 pin to USB USB cable from PC to total station. Plug the USB connector of the cable into the USB socket of the PC and use the 6 pin Hirose connector with the total station.

Grey instrument to USB communication cable for S-series instruments.

P/N: 73840019

Power Supply, Chargers and Cables

Monitoring Accessories

Cable—500 m Fiber Optics Cable



Fiber optics cable
2ST/2ST 62.5/125 DE
500 m. Type FLAT.

Cable for using with
310512-10-MON.

P/N: 310512-11-MON

Converter to Fiber UF11



Settop Ethernet to
Fiber UF11.

Adapter for using with
PN 310512-11-MON.

P/N: 310521-10-MON

Cable—Trimble S-Series to Settop M1—4m Cable



Four meter
communication cable
between Trimble S-series
total stations and Settop
M1 with Hirose (6-pin) to
Lemo (7-pin, COM2).

P/N: 310605-4-MON

11.1 V Charger for Settop Battery II



G60-12L3 Charger
11.1 V for external
UPS battery under PN
SETTOPBATTERYII-MON.

P/N: 310644-MON

Power Supply, Chargers and Cables

Monitoring Accessories

Trimble Optical 12 V Power Supply—Indoor Use Only



12 V power supply for Trimble SX10 and S-series instruments. For indoor use only. Worldwide variant comes with adapters for worldwide use.

P/N: 51697-XX*

*XX denotes power cord region:
 * 00 = WorldWide
 * 02 = Japan

Battery—11.1 V UPS for Settop M1



11.1 V UPS (uninterrupted power supply) for Settop M1. This battery requires an accompanying power supply under part number 310644-MON.

P/N: SETTOPBATTERYII-MON

Autolock Power Kit



Case for dual slot chargers (58386001) and 2 instrument batteries. Note, chargers sold separately.

P/N: SLSU-S2018-2

Prisms and Targets

Monitoring Accessories

Small Monitoring Prism



25 mm prism (box of 25). Mount horizontally or vertically.

- Prism constant: -17 mm

P/N: 58008030

GNSS/Prism Mounting Assembly—40 mm Offset



62 mm prism. 5/8th thread mount on top for GNSS receiver.

P/N: 58008040

Large Monitoring Prism



62 mm prism. Less than 2" with mounting assembly.

- Prism constant: -40 mm

P/N: 58008042

Asphalt Mount for Prisms



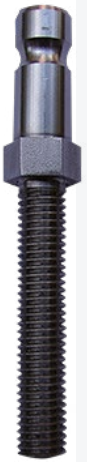
Mount for attaching prisms on the road with bolts. The 12.5 mm prism is embedded in a wedge-shaped aluminum plate, used for marking the road edge. The plate can be fixed to the road using screws or special adhesive.

P/N: 4520802-MON

Prisms and Targets

Monitoring Accessories

Nail Mount for Mini Prism



Nail to adapt prism support for 25 mm mini monitoring prism. Ideal for inserting in the gables of tunnels in concrete walls and walls in general.

- These come in packs of 10
- Insert depth: 6.5 cm
- Chemical fixation block (diameter 8 mm)
- Overall length: 9.5 cm

P/N: 53020019

AD-12 Auto Level for Total Stations



The AD-12 is designed to automatically level total station and measurement instruments. Trimble total stations can be placed in the included tribrach where it will be positively centered and locked in position.

- Continuous leveling with an accuracy of 10 mgon
- Components are enclosed in waterproof housing preventing environmental damage
- Includes 2 year warranty against manufacturing defects to the AD-12
- Intelligent power switch when connected to the Settop M1 total station controller

P/N: 8531-06-EU-MON (Europe power plug)

P/N: 8531-06-US-MON (North American power plug)

Additional sensors

Monitoring Accessories

Vaisala WXT536 Weather Sensor



The Vaisala® WXT536 Weather Sensor is one of the most frequently used weather sensor solutions on the market, and is now supported through the Trimble® geotechnical gateway using the Trimble digital logger to bring environmental data into T4D. This supported integration significantly simplifies setup and configuration as well as automates reporting and analysis of weather data.

P/N: WXT536-MON

Thermometer Cable and Power Supply



Thermometer cable and power supply.

P/N: 110471-61

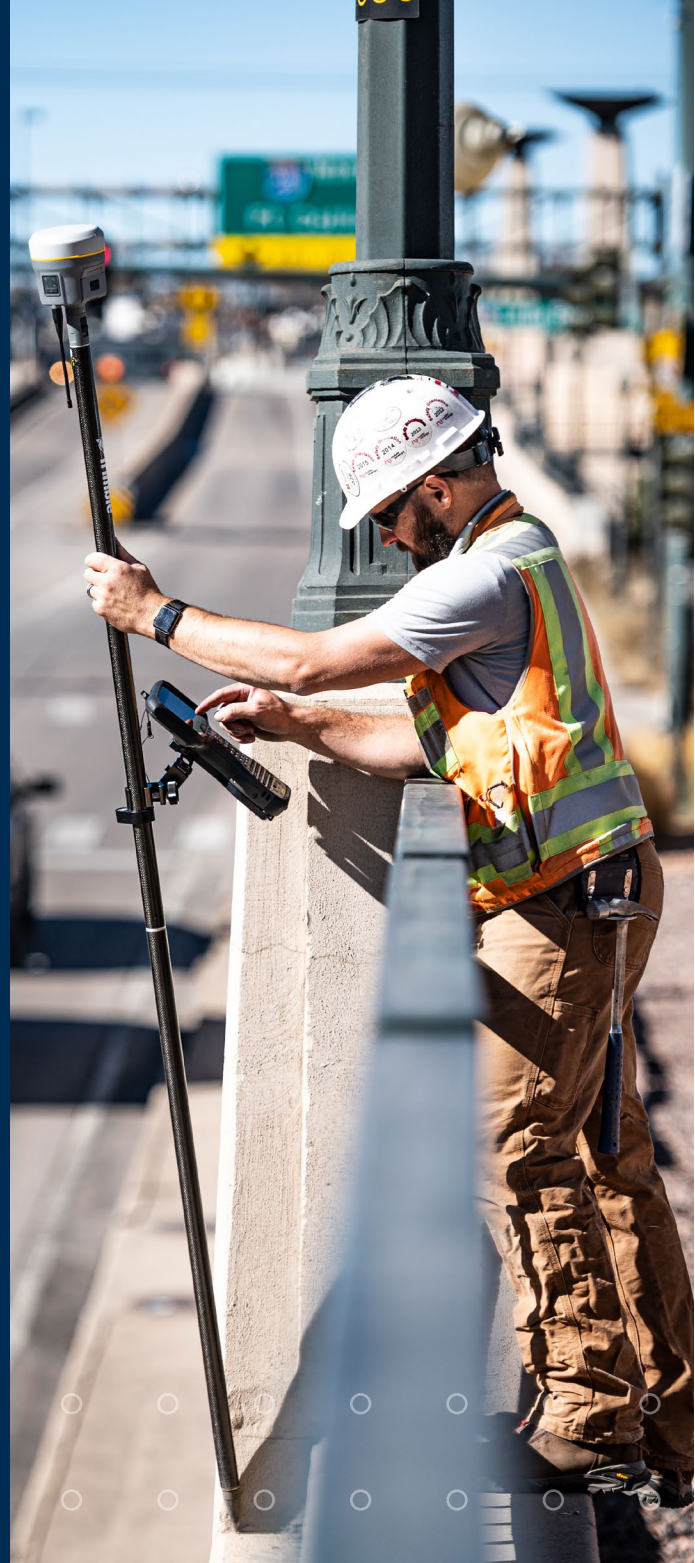
Temperature Sensor



Temperature sensor (TM-RS232). 5 m cable with metal tip.

P/N: 58008051-TM

Data Collectors



Trimble's range of high performing, rugged field devices provide everything from centimeter accuracy to communications and more. We have a range of accessories available for each including custom pole mounts, screen protectors and chargers to support and keep you working in the field.

Trimble T100 tablet

Data Collectors



Screen Protector



Trimble T100 tablet screen protector (standard ultra clear), includes a glass screen protector, cleaning cloth, alcohol wipe and dust removal sticker. Trimble recommends always using a screen protector.

P/N: 120516-GEO

USB C to A Adapter



This adapter is also compatible with Trimble TSC5 controller..

P/N: 120532-GEO

AC Adapter and International Cord Kit



Use this power supply to recharge your battery pack. The kit contains an AC adapter cable with wall plugs for the US, Europe, UK, and Australia/New Zealand.

P/N: 124341-GEO

Trimble T100 tablet

Data Collectors

Stylus and Tether



Capacitive stylus with tether for the Trimble T100 tablet.

P/N 120524-GEO

Stylus Replacement Tips with removal tool



Replacement stylus tips for T100 stylus. Pack of 5 and removal tool for easy change.

P/N: 121589-GEO

T100 USB C Vehicle Charger



USB-C PD 60 W vehicle charger.

P/N: 121718-GEO

T100 Pole Bracket Long Length



Pole bracket for the T100, long length.

P/N: 120531-GEO

Trimble T100 tablet

Data Collectors

T100 Carry Case



Carry case for the Trimble T100 tablet.

P/N: 107727-01-GEO

T100 Hand Strap



Strap for ease of use in field.

P/N: 121990-GEO

T100 Desk Stand



Office cradle for Trimble T100 tablet.

P/N: 121427-GEO

T100 Universal Mounting Plate

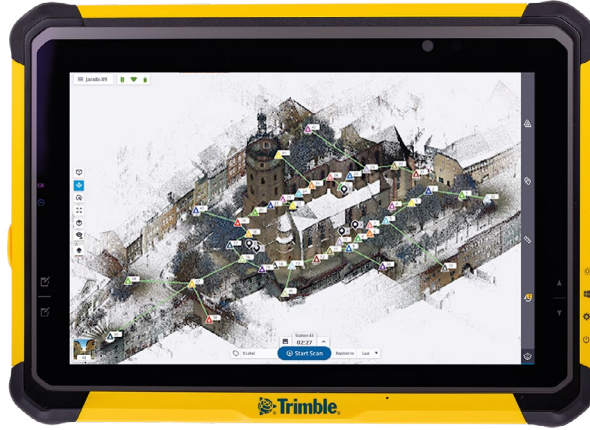


Mounting plate.

P/N: 123247-GEO

Trimble T10x tablet

Data Collectors



Hand Strap



Rubber hand strap.
(T10x in image is for demonstration only).

P/N: 131933

T10x Pole Mount Bracket



Pole mount bracket for the Trimble T10x tablet.

P/N: 114121

Battery Charger Kit / Single Battery



Battery charging kit, single battery, includes power cord.

P/N: 114113

Trimble T10x tablet

Data Collectors

Battery Pack—Enhanced Capacity



Li-Ion, INDUS, 3S2P, 11.4 V, 8000 mAh, (123 x 147 x 18.4 mm).

P/N: 114111

AC Adapter + Cord Kit with Plugs



AC adapter cable with wall plugs for the US, Europe, UK, Australia/New Zealand.

P/N: 124732

Shoulder Strap



Padded for comfort, provides convenient mobile operation. Strap is adjustable and can be attached to the mount points on the tablet.

P/N: 131932

Screen Protector (Single)



10.1", anti-glare, single sheet of films.

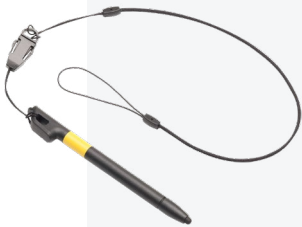
P/N: 144109

Trimble T7 tablet

Data Collectors



Stylus With Tether



This stylus tethers to the Trimble T7 tablet.
A stylus kit contains:

- 1 x stylus
- 2 x rubber tips
- 1 x lanyard

P/N: 121355-01-1

AC Adapter With International Cord



This power supply is for the Trimble T7 tablet and the external battery charger. The kit contains an AC adapter cable with wall plugs for the US, Europe, UK, and Australia/New Zealand.

P/N: 104972-01-1

Trimble T7 tablet

Data Collectors

12 V Vehicle Adapter



Adapter for 12 V. Use this cable to provide power to the T7 tablet when working in a vehicle, or to charge the handheld off vehicle power. The adapter is suitable for use with standard 12 volt vehicle power.

P/N: 104980-01-1

Rechargeable Battery 2-Pack



One set of 2 batteries for the Trimble T7 tablet.

P/N: 121320-01-1

External Battery Charger



Charger for one set of 2 batteries for the Trimble T7 tablet. Requires AC adapter (P/N 104972-01-1) which is not included. Does not include batteries.

P/N: 121343-01-1

Trimble T7 tablet

Data Collectors

External Battery Charger with International Cord



The charger for one set of 2 batteries for the Trimble T7 tablet including the international power cord. Does not include batteries.

P/N: 121348-01-1

External Battery Charger with International Cord, Battery 2-Pack



The charger for one set of 2 batteries for the Trimble T7 tablet including the international power cord and one set of 2 batteries for the Trimble T7 tablet.

P/N: 121358-01-1

Desktop Hub



The desktop hub includes a USB cable and power supply. It connects to the Trimble T7 tablet with the USB cable. It provides:

- 1 Display Port, which supports a single 2K monitor (up to 2560 x 1600 x 30 fps)
- 1 DVI-I and 1 HDMI port, which support dual monitors (up to 2048 x 1152 x 60 fps)
- 1 Gigabit Ethernet port for wired access at ultra-fast speeds
- 3 USB 3.0 SuperSpeed ports for the latest peripherals
- 1 USB 3.0 powered port for fast device charging
- 1 Audio In/Out port for mics, speakers, and earphones
- An Integrated Lock Slot which accommodates security locks to safeguard equipment

P/N: 121345-01-1

Trimble T7 tablet

Data Collectors

Hand Strap



The padded hand strap for the Trimble T7 tablet can sit on either side of the controller depending on personal preference. Attach one end of the hand strap to the top hand strap slot first and secure it. Then attach the other end to the bottom hand strap slot, adjusting it as needed to the size of your hand. Note: The hand strap rings can be used to attach the shoulder sling.

P/N: 121351-01-1

Shoulder Sling



The shoulder sling provides a convenient way of carrying the Trimble T7 tablet. The shoulder sling can be attached to either of the hand strap mount points depending on personal preference. It is possible to attach two shoulder slings creating a light harness. The shoulder sling can also attach to the hand strap.

P/N: 121344-01-1

Carry Case Shoulder Bag



This stylish bag fits a Trimble T7 tablet. The bag is made out of Cordura 1000 Denier with padding. It has 2 internal bags for spare batteries, a business card holder and pencil holders. The shoulder sling can be mounted right or left at the bottom of the bag.

P/N: 121354-01-1

Trimble T7 tablet

Data Collectors

USB to Serial Adapter



This adapter provides a DB-9 serial cable connection from a Trimble T7 tablet USB port.

P/N: 91475-00

External Antenna, GPS + GLO



GNSS antenna with MMCX connector and 1.5 m antenna cable.

P/N: 109766

Vehicle Hard Mount with Quick Release



Attach the Trimble T7 tablet to a vehicle dashboard using this bracket. Contains a device mount, quick release and vehicle mount.

P/N: 121647-01

USB I/O Boot



A replacement I/O boot with DC power input, 2 x USB 3.0 host, 3.5 mm audio/headset jack.

P/N: 121644-01-1

Trimble TCU5 controller

Data Collectors



Screen Protector



Replacement screen protector for the Trimble TCU5 controller.

P/N: 51258001

Stylus



Stylus for use with the Trimble TCU5 controller.

P/N: 121355-01-1

TCU5 Stylus Tips



Replacement stylus tips for TCU5 stylus (pack of 5).

P/N: 119542-GEO

Trimble TCU5 controller

Data Collectors

Robotic Holder Kit



Kit contains case, robotic holder model 2 with radio, battery and pole bracket for use with TCU controller.

P/N: SLSU-S2026

Robotic Holder Model 2



For using the TCU controller robotically with a robotic instrument or GNSS receiver. Includes 2.4 GHz radio for connecting to instruments. Pole mount sold separately.

P/N: 558088052

Trimble Instrument Battery (10.8 V, 6400 mAh)



Lithium-ion battery for use with Trimble SX12, SX10, X9, X7, and S-Series instruments.

P/N: 99511-30

Pole Bracket for Robotic & GNSS holder



Pole bracket for standard rod for the TCU robotic and GPS holder.

P/N: 58211001

Trimble TCU5 controller

Data Collectors

Trimble Optical 12V Power Supply—Indoor use only



12 V Power supply for TCU office dock or Robotic/GNSS holder. For indoor use only. Comes with adapters for worldwide use.

P/N: 58027007-00

TCU Robotic Holder Case



Case for the TCU Robotic holder and associated accessories.

P/N: RH-CASE-10

USB Adapter Cable



0.18 m, Hirose 6 pin to USB adapter. For use with USB stick or compact flash card reader.

P/N: 73841019

Office Dock

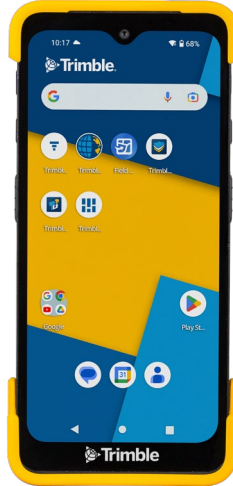


Office cradle for TCU controller. Requires power supply (P/N: 51697-00) and USB cable for connecting to PC (P/N: 73840019).

P/N: 58085001

Trimble TDC6 handheld

Data Collectors



Screen Protector



Glass Screen Protector for the Trimble TDC6 handheld (3 pack).

P/N: 125513-10-GEO

Device Bracket with Quick Release



Device bracket with tapered quick release for the Trimble TDC6 handheld.

P/N: 125520-GEO

Pole Clamp with Quick Release Socket



Use with the Trimble TDC6 handheld device bracket with tapered quick release.

P/N: 119696-GEO

Trimble TDC6 handheld

Data Collectors

Device Bracket with Magnetic Plate



Device Bracket with magnetic plate for the Trimble TDC6 handheld.

P/N: 125521-GEO

Pole Clamp with Magnetic Mount



Use with the Trimble TDC6 handheld device bracket with magnetic plate.

P/N: 125522-GEO

Robotic Total Station Attachment with Magnetic Mount



Bracket for the mechanical mounting of the Trimble TDC6 handheld onto a Trimble S-series total station. Connection to the S-series instrument from the TDC6 for onboard operation is via Bluetooth®.

P/N: 125523-GEO

Trimble TDC6 handheld

Data Collectors

AC Adapter Pack



AC Adapter pack and USB-C Cable (Power/Data) for the Trimble TDC6 handheld. .

P/N: 121921-GEO

Battery Pack



Hot-swappable battery pack for the Trimble TDC6 handheld.
Li-ion 5100 mAh 3.85 V.

P/N: 125510-10-GEO

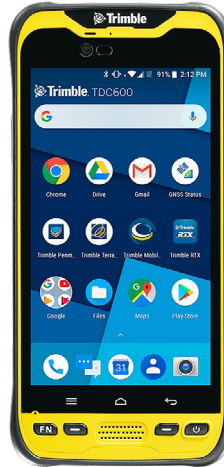
Also available:

Catalyst GNSS Antenna Handle—Packout (See page 59)

P/N: 128433-00

Trimble TDC600 handheld

Data Collectors



Hand Strap



Hand strap kit for the back of the Trimble TDC600 handheld for extra handling security whilst on the job.

P/N: 118832

Lanyard



Wrist strap for extra security when working in the field.

P/N: 109774

Rechargeable Battery



User-replaceable, rechargeable battery (8,000 mAh).

P/N: 124461-10

Trimble TDC600 handheld

Data Collectors

Dual Battery & Gang Charger



TDC600 dual battery, BA7800 3.8V 8000mAh, gang charger with AC adapter. This external dual battery and gang charging accessory assists users who may have longer workday needs or to help with campaigns where teams are deployed with the same shared TDC600 hardware and cannot afford downtime. A dual charger can also help quickly charge large stocks of batteries that have been safely stored.

P/N: 118835-00

AC Adapter with International Cord



Power supply to recharge your battery pack. The kit contains an AC adapter cable with wall plugs for the US, Europe, UK, and Australia/New Zealand.

P/N: 118420

Pole Bracket



Range pole bracket provides the ability for users to operate in landscape or portrait modes to improve workflows that require forms/data to be entered. Ideal when using the TDC600 with an external receiver like the Trimble Catalyst DA1 or Trimble R2 receiver for a convenient all-on-the-pole solution.

P/N: 117057-GEO-BKT

Trimble TDC600 handheld

Data Collectors

S-series Instrument Bracket



Bracket for the mechanical mounting of the Trimble TDC600 controller onto a Trimble S-series total station. Connection to the S-series instrument from the Trimble TDC600 handheld for onboard operation is via Bluetooth.

P/N: SSERIES-CB-10

External Antenna, GPS + GLO



GNSS antenna with MMCX connector and 1.5 m antenna cable.

P/N: 109766

Screen Protector



Screen protector for the Trimble TDC600 handheld.

P/N: 118831

Trimble TSC7 controller

Data Collectors



TSC7 Controller Case



Hard case for TSC7 controller and accessories including 360 Prism. Case contains space for:

- TSC7 controller
- Pole bracket
- dual slot battery charger and 2 spare batteries
- Trimble 360 Prism (MT1000, AT360, R10 360 or VX & S-series 360).
- 1 x MT1000/R-Series receiver battery
- 2 x total station batteries
- 2 x spare antenna slots
- Outer Case Dimensions: 466 mm x 351 mm x 286 mm (18.36" x 13.82" x 11.26")

P/N: 121360-01-1

Carry Case Shoulder Bag



This stylish bag fits a Trimble TSC7 controller. The bag is made out of Cordura 1000 Denier with padding. It has 2 internal bags for spare batteries, a business card holder, pencil holders. The shoulder sling can be mounted right or left at the bottom of the bag.

P/N: 121354-01-1

Trimble TSC7 controller

Data Collectors

Pole Mount



Consists of a pole-facing component and a controller-facing component, both connected with a spare connector as used with other Trimble mounting products. The pole component is compact enough to fit into a 10 cm (4") pipe for storage. The controller-facing component features an arm which can be set up for left- or right-hand usage.

P/N: 121349-01-1

Desktop Hub



The desktop hub includes a USB cable and power supply. It provides:

- 1 display port, which supports a single 2K monitor (up to 2560 x 1600 x 30 fps).
- 1 DVI-I and 1 HDMI port, which support dual monitors (up to 2048 x 1152 x 60 fps).
- 1 gigabit ethernet port for wired access at ultra-fast speeds.
- 3 USB 3.0 SuperSpeed ports for the latest peripherals.
- 1 USB 3.0 powered port for fast device charging.
- 1 Audio In/Out port for mics, speakers, and earphones.
- Integrated Lock Slot which accommodates security locks to safeguard equipment.

P/N: 121345-01-1

Trimble TSC7 controller

Data Collectors

Serial I/O Boot



The standard boot for the Trimble TSC7 controller. It is available as a user-replaceable accessory in case of damage.

P/N: 121330-01-1

USB I/O Boot



An alternative boot with 2 USB ports.

P/N: 121330-02-1

AC Adapter With International Cord



This AC adapter has all international connectors included. It is for the TSC7 controller and the external battery charger.

P/N: 121341-00-1

AC Adapter with China Cord



This is a China-only cord. It is for the TSC7 controller and the external battery charger.

P/N: 121341-07-1

Trimble TSC7 controller

Data Collectors

12V Vehicle Adapter



Vehicle adapter for 12V.

P/N: 104980-01-1

Rechargeable Battery 2-Pack



One set of 2 batteries.

P/N: 121320-01-1

External Battery Charger



Charger for one set of 2 batteries.

P/N: 121343-01-1

External Battery Charger with International Cord



The charger for one set of 2 batteries, including the international power cord. Does not include batteries.

P/N: 121348-01-1

Trimble TSC7 controller

Data Collectors

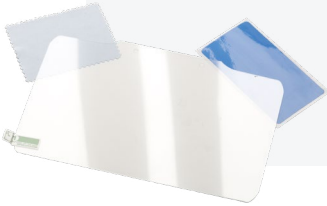
External Battery Charger with International Cord, Battery 2-Pack



The charger for one set of 2 batteries, including the international power cord and one set of 2 batteries.

P/N: 121358-01-1

Glass Screen Protector



Glass screen protector, cleaning cloth, alcohol wipe and dust remover. Trimble recommends always using a screen protector.

P/N: 121340-01-1

Stylus with Tether



Capacitive stylus with tether.

P/N: 121355-01-1

Serial Data Cable



1.0 m (DB9 to DB9).

P/N: 82761-00

Trimble TSC7 controller

Data Collectors

Hand Strap



The padded hand strap for the Trimble TSC7 controller can sit on either side of the controller depending on personal preference. The hand strap rings can be used to attach the shoulder sling.

P/N: 121351-01-1

Shoulder Sling



The shoulder sling provides a convenient way of carrying the Trimble TSC7 controller. The shoulder sling can be attached to either of the hand strap mount points depending on personal preference. It is possible to attach two shoulder slings creating a light harness. The shoulder sling can also attach to the hand strap.

P/N: 121344-01-1

Trimble TSC5 controller

Data Collectors



Hand Strap



The padded hand strap for the Trimble TSC5 controller can sit on either side of the controller depending on personal preference. The hand strap rings can be used to attach the shoulder sling.

P/N: 121351-01-1

Shoulder Sling



The shoulder sling provides a convenient way of carrying the TSC5 controller. The shoulder sling can be attached to either of the hand strap mount points depending on personal preference. It is possible to attach two shoulder slings creating a light harness. The shoulder sling can also attach to the hand strap.

P/N: 121344-01-1

Trimble TSC5 controller

Data Collectors

TSC5 Carry Case / Protective Pouch



Includes a clear PVC business card holder, front zippered mesh pocket, rear nylon pocket with velcro closure to store a field notebook, interior mesh pocket and velcro loop, 2 handle straps for carrying and 2 D rings for attaching an optional shoulder sling.

P/N: 121986-01-GEO

Pole Mount Bracket



The Trimble TSC5 controller simply snaps into the lock. To remove, squeeze and pull up on the latch. This part is used in combination with part number 121951-01-GEO, which includes an adjustable arm and quick release pole clamp.

P/N 121952-01-GEO

Quick Release Pole Mount Clamp with Adjustable Arm



This part is compatible with both the TSC5 pole mount bracket and the TSC7 pole mount bracket. The attachable arm includes 3 options for attaching to the pole mount bracket. The pole clamp part (with the bracket/arm and TSC5 detached) remaining on the pole fits inside a 10 cm (4") tube.

P/N: 121951-01-GEO

Trimble TSC5 controller

Data Collectors

Trimble Li-35 removable Lithium-ion battery pack



~35 Wh capacity. Compatible with TSC710, TSC510 and TSC5 controllers.

P/N: 220200

International AC Power Adapter Charger Kit



International AC Power Adapter Charger kit (includes 45 W wall charger (58 x 46 x 28 mm) with USB-C PD female port, NA plug with regional adapters (EU,UK,SAA), and a USB-C (male) to USB-C (male) cable for charging and data transfer (5 Pack). The cable can be connected to the AC adapter and TSC5 controller for charging, or from TSC5 controller to a computer for data transfer.

P/N: 121921-GEO

USB Type-A to USB Type-C



USB 3.1 Type-A (male) to USB-Type-C (male) data transfer cable (3 feet). (10 Pack).

P/N: 114955-GEO

Trimble TSC5 controller

Data Collectors

11-32V DC Vehicle Charger



This USB-C PD 60 W vehicle charger is a Trimble T100 tablet accessory which is also compatible with the Trimble TSC5 controller.

P/N: 121718-BLK-GEO

Desktop Hub



The desktop hub includes a USB cable and power supply. It connects to the TSC5 controller with the USB cable.

1 display port, which supports a single 2K monitor
(up to 2560 x 1600 x 30 fps)

- 1 DVI-I and 1 HDMI port, which support dual monitors (up to 2048 x 1152 x 60 fps)
- 1 gigabit ethernet port for wired access at ultra-fast speeds.
- 3 USB 3.0 SuperSpeed ports for the latest peripherals
- 1 Audio In/Out port for mics, speakers, and earphones
- An Integrated Lock Slot which accommodates security locks to safeguard equipment

P/N: 121345-01-1

Trimble TSC5 controller

Data Collectors

USB 3.1 USB-C to USB-A adapterpack



This adapter is a Trimble T100 tablet accessory which is also compatible with the Trimble TSC5 controller.

P/N: 120532-BLK-GEO

International AC Power Adapter Charger Kit



TSC5 controller glass screen protector (standard ultra clear) (10 Pack). Includes a glass screen protector, cleaning cloth, alcohol wipe and dust removal sticker. Trimble recommends always using a screen protector.

P/N: 115896-GEO

Capacitive Stylus with Tether



Capacitive stylus with tether for the TSC5, TSC7 controller or T7 tablet.

P/N: 121355-01-1

Trimble Empower Modules



Trimble Empower™ introduces a modular expansion system that gives you the power to customize your mobile computing solution to your workflow, and the confidence of knowing that your investment is scalable for future needs. The Trimble Empower Asset Tracking and GNSS Modules give you the flexibility to capture Barcode, Ultra-High Frequency (UHF) RFID, or sub-meter GNSS data in the harshest of environments.

Empower modules

Data Collectors & Empower Modules

EM940 UHF & 900 MHz Empower Radio Module



The Trimble EM940 Empower dual mode radio receiver module supports receiving GNSS RTK corrections from a variety of base radio systems. It supports both the UHF frequency bands (410 MHz–470 MHz) and the 900 MHz spread spectrum bands.

P/N: 129774-00-1

EM450 UHF Empower Radio Module



The Trimble EM450 UHF Empower radio module supports receiving GNSS RTK corrections from UHF frequency base radio systems using the 410 MHz–470 MHz range.

P/N: 129774-10-1

EM130 WiFi HaLow Module



Trimble Empower EM130 module used with Trimble SX12 scanning total station with Wi-Fi® HaLow™ option.

P/N: 123731-00-GEO

EM120 2.4 GHz Module



Trimble Empower robotic radio module to connect with total stations. Compatible with Trimble TSC5 data controller, T7 tablet and T100 tablet.

P/N: 110238-00-1

Empower modules

Data Collectors & Empower Modules

EM110 1D/2D Barcode Imager Module



Trimble Empower asset tracking module integrates barcode imager functionality with Empower-enabled handheld devices.

P/N: 110255-00-01

EM111 1D/2D Barcode Imager & UHF 865.6–867.6 MHz RFID – EU



Trimble Empower asset tracking module for European frequencies. Integrates barcode imager and/or ultra-high frequency (UHF) RFID reader functionality with Empower-enabled handheld devices. Compatible with Trimble TSC5 controller, T7 and T100 tablets.

P/N: 111974-00-1

For more information:

- [Trimble EM940 Empower radio module spec sheet](#)
- [Trimble EM940 Empower radio module FAQs](#)
- [Trimble EM450 Empower radio module spec sheet](#)
- [Trimble EM450 Empower radio module FAQs](#)
- [Trimble EM120 Empower 2.4 GHz radio module spec sheet](#)
- [Trimble EM110 Empower 1D/2D barcode imager module spec sheet](#)

Empower modules

Data Collectors & Empower Modules

Trimble EDB10 Empower Data Bridge



A “sled” that takes the Empower concept further to allow an EM120 Cirronet radio module to support not only Trimble Empower host devices (e.g. Trimble TSC7 controller) but also on non-Empower enabled devices.

Allows communication between Trimble robotic-enabled total stations and Bluetooth-enabled devices when paired with an EM120 2.4 GHz module (P/N: 110238-00-1). Providing seamless integration to robotic total stations through a wider range of data collectors—without compromising range or robotic functionality.

*Note this accessory is not compatible with Trimble SX10 Instruments.

P/N: 122507-01-1

Trimble EM120 2.4 GHz Antenna



Trimble EM120 2.4 GHz antenna (10 pack).

P/N: 115189-GEO

TNC Antenna Mount Dust Cap



Dust caps (5 pack).

P/N: 129312-00-GEO

EM940 410–473 MHz Radio Module Antenna



Radio module antenna (5 pack).

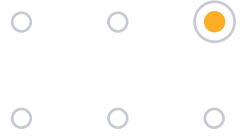
P/N: 129775-00-GEO

C900 MHz Radio Module Antenna



Radio module antenna (5 pack).

P/N: 32319-10-BLK-GEO



Other Accessories



S-Series

Other Accessories

S-Series 90 Degree Eye Piece



Kit contains 90 degree eyepiece, counterweight, and protective case.

P/N: 78500007

Solar Filter for S-Series



Compatible with all S-series instruments.

P/N: 78200007

Rain Lens Cover for S-Series



Rain lens cover for S-series instruments.

P/N: 50013001

S-Series Instrument Cable



2.5 m Hirose 6 pin to USB USB cable from PC to total station

Plug the USB connector of the cable into the USB socket of the PC and use the 6 pin Hirose connector with the total station.

Grey instrument to USB communication cable for S-series instruments.

P/N: 73840019

SX-Series and S-Series Instrument Cable



2.5 m HIROSE 6P-PC to USB 2.0 cable for S-series and SX-series instruments.

P/N: 53099032

S-Series

Other Accessories

FineLock Lens Aperture for S-Series



15 mm lens aperture for Trimble S-series instruments when using FineLock.

P/N: 51030010

Panel Cover for S-Series



Cover for Trimble CU attachment panel on S-series instruments.

P/N: 50014012-SUR

SX Antenna (pack of 5)



2.4 GHz replacement antenna for Trimble SX10 and SX12 instruments.

P/N: 59429025-GEO

S-Series Antenna



2.4 GHz TNC/R replacement antenna for S-series instruments.

P/N: 59276025-GEO

SX Antenna for Wi-Fi HaLow™ Model



Replacement antenna for SX12 with Wi-Fi HaLow.

P/N: 59912025

Instrument Rain Cover



Instrument rain cover for S-series instruments.

P/N: 51002007

Sentinel

Other Accessories

Trimble Sentinel Aftermarket Board Kit for S5/S7/S9/S9HP



The Trimble Sentinel hardware module and application gives you real time tracking based on time or distance and allows you to easily locate lost, stolen or missing equipment. This is a service part upgrade for any S5/S7/S9/S9HP instrument and needs to be paired with the Trimble Sentinel subscription (103500-00).

P/N: U8004 (Americas)

P/N: U8004 (Eu/RoW)

C-Series

Other Accessories

Low-Power Eyepiece Lens



Provides an overall magnification of 19x.

P/N: HEK01000-SPN

High-Power Eyepiece Lens



Provides an overall magnification of 38x.

P/N: HEK02000-SPN

Diagonal Eyepiece



For C-series total stations.

P/N: HED14002

Solar Filter



52 mm solar filter for C-series instruments.

P/N: HXA20579-SPN

C-Series

Other Accessories

C5 Screen Protectors—Anti Glare (pack of 2)



Anti glare screen protectors for the Trimble C5 instrument control panel.

P/N: 67201-14

Stylus



Stylus for use with the Trimble C5 total station (3 pack).

P/N: 571225539

C-Series

Other Accessories

Instrument to USB Cable 1.5 m



Instrument to USB communication cable for C-Series instruments.

P/N: HQK45000

Instrument to Serial Cable



Communication cable for Trimble C-Series instruments.

P/N: HXE21214

GNSS Cables and Optical Instrument Cables

Other Accessories

USB Field Data Cable



7P Lemo to USB-A female.
Compatible with Trimble R12i, R12, R10 and R780 GNSS receivers.

P/N: 89850-00

Serial Field Data Cable



7P Lemo to DB9.
Compatible with Trimble R12i, R12, R10, R750, R9s and R8s GNSS receivers.

P/N: 89851-00

USB Office Data and Power Y-Cable



7P Lemo to USB-A male and power.
Compatible with Trimble R12i, R12, R10 and R780 GNSS receivers.

P/N: 89852-00

Serial Office Data and Power Y-Cable



7P Lemo to DB9 and power.
Compatible with Trimble R12i, R12, R10, R750, R9s and R8s GNSS receivers.

P/N: 89853-00

GNSS Cables and Optical Instrument Cables

Other Accessories

Cable - 1.6 m 7P USB to Locking USB-C



Compatible with R12i, R12, R780 and R10 GNSS receivers.

P/N: 123723-00

Ext. Battery Cable Set



7P Lemo to SAE, 0.6 m / SAE to battery clips, 1.8 m.
Compatible with Trimble R12i, R12, and R10 GNSS receivers.

P/N: 89864-00

NMO to SMA Radio Antenna Cable



5 m (for the 450 MHz antenna).
Compatible with Trimble R12i, R12, and R10 GNSS receivers.

P/N: 89865-05

Cable—1.5 m



1.5 m, 0S/7P/M-DB9/F, Dat (TM3/4700/4800/5700).
Compatible with Trimble R12i, R12, R10, R750, R9s and R8s GNSS receivers.

P/N: 59046

GNSS Cables and Optical Instrument Cables

Other Accessories

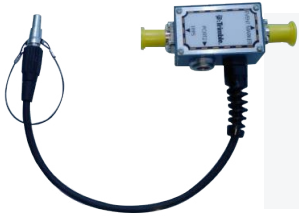
Data Cable



DB9 (F) to DB9 (F), null modem.
Compatible with Trimble R750, R9s and R8s GNSS receivers.

P/N: 59043

Cable - Assy Event Marker/1PPS ROHS (Survey)



Compatible with Trimble R750 GNSS receiver.

P/N: 36451-02-SUR

Ethernet Cable



CAT5, 2 m (Survey).
Compatible with Trimble R750 and R9s GNSS receivers.

P/N: 50150-00-SUR

Cable—Data/Power, 1.5 m



Cable - Data/Power, 1.5 m, DB9(F) to OS/7P/M to SAE (Survey).
Compatible with Trimble R750 GNSS receivers.

P/N: 59044-10-SUR

GNSS Cables and Optical Instrument Cables

Other Accessories

Assy Cable USB Mini-B Plug to A Plug



Compatible with Trimble R580 and R2 GNSS receiver.

P/N: 74408-00

Angled USB Cable



1.2 m, locking.
Compatible with Trimble R580 and R2 GNSS receiver.

P/N: 106286

Angled USB Cable



3 m, locking.
Compatible with Trimble R580 and R2 GNSS receiver.

P/N: 106298-00

USB Cable



1.5 m. Ships with standard receiver kit (R9S-001-XX).
Compatible with Trimble R9s GNSS receivers.

P/N: 44016

GNSS Cables and Optical Instrument Cables

Other Accessories

Cable—Data/Power, 0.5 m



Cable - Data/Power, 0.5 m, DB26(F) to DB9(F) / DB9(M) / RJ45(F) / BNC/SAE (Survey). Compatible with Trimble R750 GNSS receivers.

P/N: 78235-10-SUR

Cable—Car Battery to Hirose 6 Pin



3.0 m, Car battery (croc clips) to Hirose 6 pin.

P/N: 73836019

Cable—Cigarette Lighter to Hirose 6 Pin



3.0 m, Cigarette lighter to Hirose 6 pin.

P/N: 73835019

Serial Cable



Serial cable from PC to total station.
Plug the serial connector of the cable into the serial socket of the PC and use the 6 pin Hirose connector with the total station.

P/N: 53002021

GNSS Cables and Optical Instrument Cables

Other Accessories

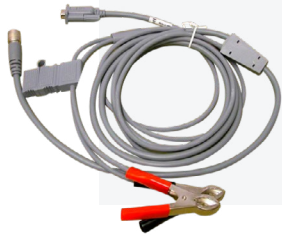
Cable—For 3 Bay Battery Holder



Cable for 3 Bay Battery Holder

P/N: 73838019

Cable—2.4 GHz radio cable for PC 2.5 m



Hirose 12 pin to D-sub 9 pin and car bat (croc clips)
Connected via a 12-pin cable, then the 2.4 GHz radio to a DB9 connector on the appliance. Commonly used in monitoring installations with Moxa box.

P/N: 53016019

Trimble R980 5 m external UHF antenna cable



Compatible with Trimble R980 GNSS receivers.

P/N: 130626-05

Miscellaneous

Other Accessories

Triple-Mag Mount



With 5/8" thread.

P/N: 88771-GEO

GNSS Antenna Magnetic Mount



Compatible with Trimble R750, R10, R9s, R8s and R2 GNSS receivers.

P/N: 12920-SUR

Mounting Bracket with Screws - R750 (Survey)



Mounting bracket for the Trimble R750 receiver.

P/N: 128018-00-SUR

Tape Measure



7.5 m / 24.6 ft. Metric and tenths graduations.

P/N: 52618

Miscellaneous

Other Accessories

Footplate with Steel Punch



Light-weight rod base.for Digital levels.

P/N: 707803000000



Trimble Geospatial Accessories



L CATALOG



© 2023–2025, Trimble Inc. All rights reserved. Trimble and the Globe & Triangle logo, DiNi and R10 are trademarks of Trimble Inc., registered in the United States and in other countries. Catalyst, Empower and Zephyr are trademarks of Trimble Inc. Android is a trademark of Google LLC. The Bluetooth word mark and logos are owned by the Bluetooth SIG, Inc. and any use of such marks by Trimble Inc. is under license. All other trademarks are the property of their respective owners. PN 022516-707K (09/25)