

Trimble T110 Tablet

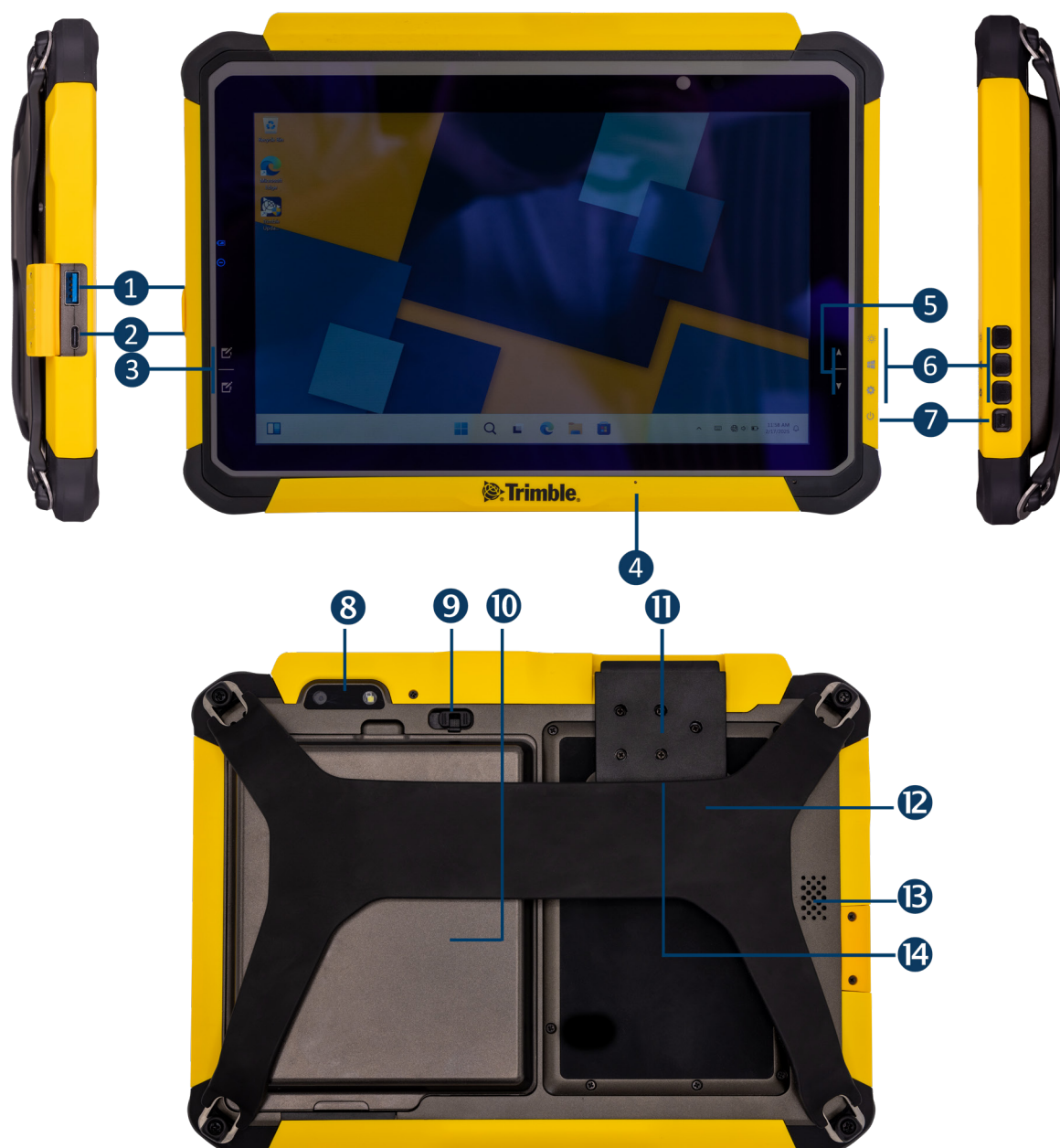


CAUTION – Before using this product, refer to the safety and compliance documentation for the T110 tablet online in the [Field Systems Help Portal](#).

In the box

- Trimble T110 tablet with hot-swappable battery
- Screen protector
- Digital pen with tether and battery
- Handstrap

Parts of the Trimble T110 tablet



- | | |
|--|---|
| 1 USB-C port (power input) | 8 Camera |
| 2 USB 3.0 (type A) port | 9 Battery latch. Push the switch up to unlock this latch, then slide the latch left to remove the battery. |
| 3 Programmable Function keys (x2) | 10 Battery |
| 4 Microphone | 11 Empower module bay |
| 5 Brightness Up / Down | 12 Handstrap (optional) |
| 6 Programmable Function keys x 3 | 13 Speaker |
| 7 Power button | 14 SIM card slot (under the Empower adapter / door). |

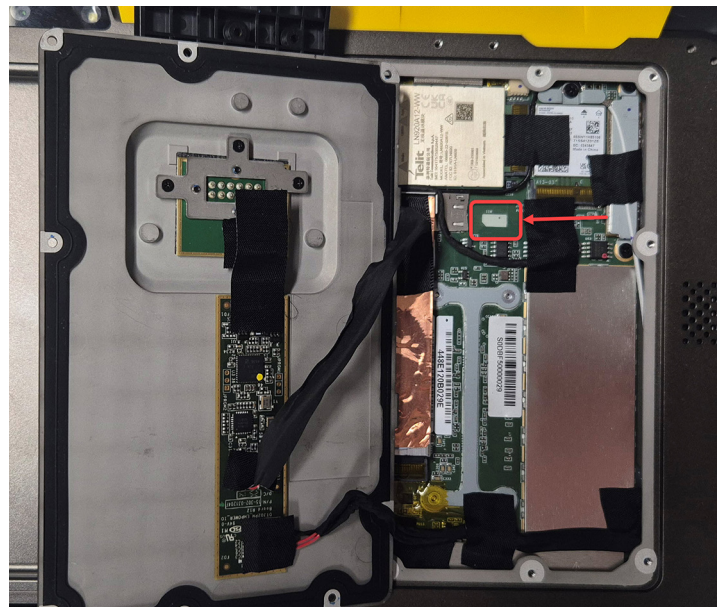
Charge the battery

The T110 tablet is shipped in “shipping mode”; under the battery there is a pull tab sticker that says **Remove**. You must remove this tab to take the tablet out of battery shipping mode.

It takes up to 7.5 hours to charge the T110 tablet battery pack from an empty state. When the battery is charging, the blue-colored Battery LED should blink slowly. The LED turns solid blue when the battery is fully charged.

Installing a nanoSIM card (optional)

1. If the device is on, turn it off; tap-hold, then tap **Shut down** or **sign out / Shut down**.
2. If you have an Empower module installed, use a Phillips screwdriver to loosen the screws to remove the module.
3. Use a Phillips screwdriver to loosen the screws to remove the cover.
Completely remove the screws and secure them somewhere safe to prevent losing them. If you do not remove them completely they will fall out when you fold back the cover.
Only remove the screws circled in red, as shown in the image:
4. The cover is attached to the main board, so take care when opening it; it cannot be fully removed. Carefully lift it up then fold it back to the left.
5. The SIM card is most easily inserted by putting its contacts down on the board. Slide it into the SIM slot until it clicks in.
6. Fold back the cover, reattach the screws, and if using a module, re-attach it.



NOTE - Should you need to remove the SIM, push it in so that it pops out.

Install the screen protector

1. Place the device on a clean, flat surface. Make sure your hands are clean.
2. Clean the touchscreen with a damp cloth, alcohol wipe or similar.
3. Polish and dry the screen with a lint-free cleaning cloth.
4. Remove the protective film from the screen protector that is labeled Back. This part will be in contact with the tablet screen. Do not touch the "Back" section after removing the film.
5. Align the screen protector with the glass portion of the display. Use the edge of the display as a guide. The screen protector should line up evenly with the edges of the screen.
6. Carefully lay the screen protector down on the screen. If you make a mistake and the glass looks off-center, you can gently lift the screen protector up and realign it. Then, once the protector is on the screen, give it a soft press in the center and allow the adhesive surface to grip to the screen naturally.
7. If there are any bubbles remaining, use the cloth provided to gently smooth them toward the edges of the screen protector.

© 2025, Trimble Inc. All rights reserved. Trimble and the Globe & Triangle logo are trademarks of Trimble, registered in the United States and in other countries. All other trademarks are the property of their respective owners. Rev A (09/2025).

Trimble Inc.
10368 Westmoor Drive
Westminster CO 80021
USA