

Presented By:  
<Name> | <Region> | <Company>

# Workflow Guide for Semi-Automated Monitoring

Trimble Access Monitoring App  
Trimble Business Center Monitoring Edition

# Contents Overview

---

01

02

03

04

05

## Applications for Semi-Automated Monitoring

### The power of Trimble Access

- Trimble Access Applications
- Trimble Access Monitoring Workflow
- What's new in Trimble Access 2021.11



### The power of Trimble Business Center

- Trimble Business Center Applications
- Trimble Business Center Monitoring Workflow
- What's new in Trimble Business Center 5.50



## Subscription Offering

Overview for Trimble Access and Trimble Business Center

## Resources

Monitoring Website | Monitoring Community | Resource Center |  
Power Hours | YouTube | Trimble Access Tech Tips



# Applications for Semi-Automated Monitoring



- Short-term Construction
- Pile Installation
- Deep excavations/shoring



- Dam seasonal movement
- Long-term Subsidence and trends with low risk slopes



- Network control and verification
- Cost effective for short term and small projects



# 02

## The power of Trimble Access





# The power of Trimble Access

All day, every day. What professionals use to survey in the field

- The core functionality of Trimble Access is General Survey
  - Industry's most powerful and surveyor-optimized environment for measuring points, stake out points, lines, arcs and alignments, scanning, COGO and many other routines
- Trimble Access Applications
  - There are a number of add-on applications to Trimble Access that expand its capability for specialized workflow such as Roads, Tunnels, Pipelines, Monitoring and many more...



General Survey



Roads



Tunnels



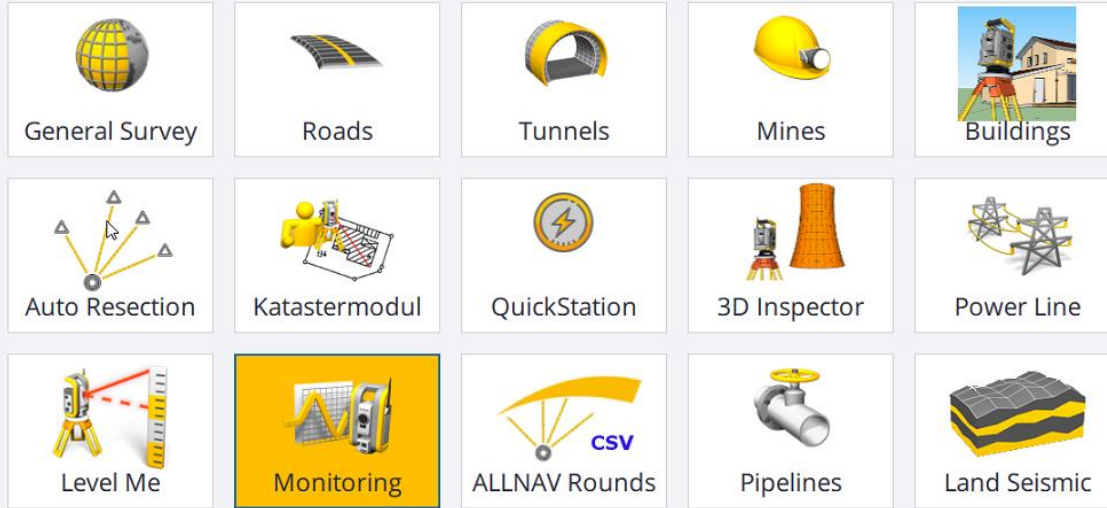
Pipelines



Monitoring



# Trimble Access Applications



- Trimble Access [App availability](#)
- Trimble Access [Apps supported on Windows devices](#)
- Trimble Access [Apps supported on Android devices](#)

## Monitoring

The Trimble Monitoring application provides streamlined workflows to set up, monitor and report on regular control and deformation surveys.



# Instruments and Controllers

Trimble Access 2021.11 Monitoring Module  
on **Windows** controllers Support all instruments

- Trimble SX-Series Scanning Total Stations
- Trimble S-Series Total Stations



Trimble Access 2017.00 Monitoring Module  
on **Windows Mobile/CE** controllers Support

- Trimble S6 Total Stations
- Trimble S8 Total Stations
- Trimble VX Spatial Stations

Supported **Android** controllers

- Trimble TSC5 controller
- Trimble TCU5 onboard controller
- Trimble TDC600 handheld

Apps supported on Android devices depend on the version of Trimble Access you are using:

Trimble Access Apps	Contact	2021.10 & later	2020.10	2020.00
Roads	Trimble	✓	✓	✓
Tunnels	Trimble	✓	✓	✗
Mines	Trimble	✓	✓	✗
Pipelines	Trimble	✓	✓	✗
Power Line	Trimble	✓	✗	✗
Katastermodul Deutschland	Trimble	✓	✗	✗
Monitoring	Trimble	✓	✓	✗
AutoResection	Allnav Ag	✓	✗	✓
ALLNAV Rounds	ALLNAV	✓	✗	✗

Supported **Windows** controllers

- TSC7 controller
- T10 Tablet
- T100 Tablet





# Trimble Access Monitoring

Field software for efficient data collection and monitoring site setup

## Automated data collection

Efficiently collect monitoring measurements with in-field reporting and alarms

## Site setup and preparation

Define your monitoring network and targets to prepare for automated system with Settop M1 and T4D Integration

## Reporting and analysis

Share reports from the field and integrate with Trimble Business Center for a comprehensive semi-automated package





# Trimble Access Monitoring

Streamline the collection of total station rounds to reduce operator input and field time for semi-automated monitoring projects



## Semi-automated Monitoring

Round configuration and scheduling

Automatic and manual measurements

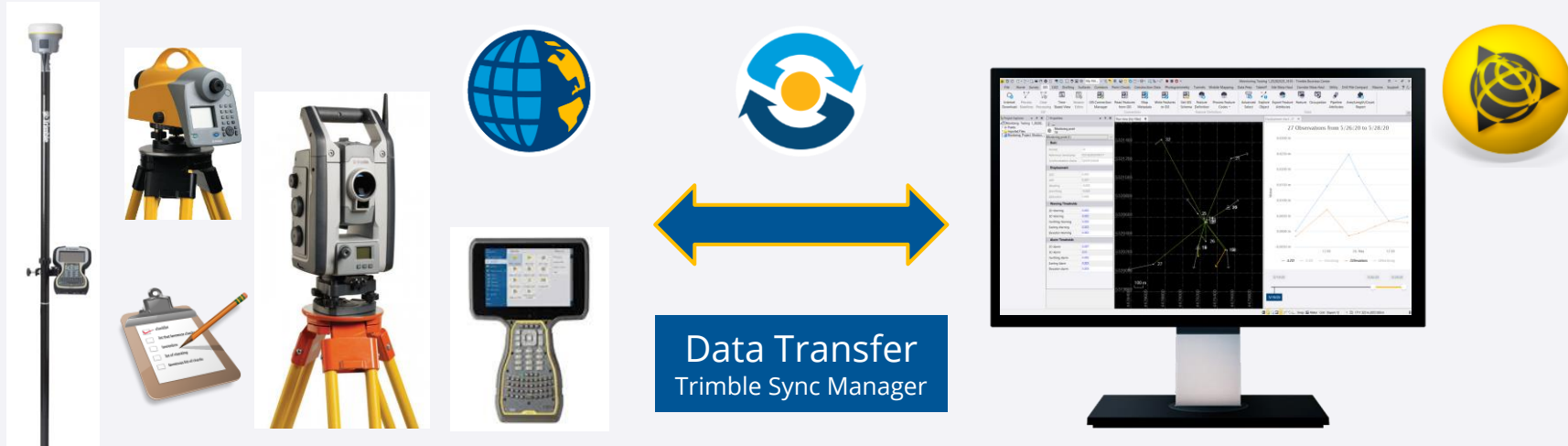
Scatter plot and displacement charts

Threshold definition and warnings

Epoch list			
Epochs			
10			
Number	Start	End	Time between epochs
1	5:00:00 PM	5:01:00 PM	14.0 Minutes
2	5:15:00 PM	5:16:00 PM	14.0 Minutes
3	5:30:00 PM	5:31:00 PM	14.0 Minutes
4	5:45:00 PM	5:46:00 PM	14.0 Minutes
5	6:00:00 PM	6:01:00 PM	14.0 Minutes
6	6:15:00 PM	6:16:00 PM	14.0 Minutes
7	6:30:00 PM	6:31:00 PM	14.0 Minutes
8	6:45:00 PM	6:46:00 PM	14.0 Minutes
9	7:00:00 PM	7:01:00 PM	14.0 Minutes
10	7:15:00 PM	7:16:00 PM	14.0 Minutes
Back Options Next			



# Workflow for Semi-automated Monitoring



Data Collection and Scheduling

Total station, GNSS, level  
Trimble Access Monitoring field software

Data Management, Processing  
and Reporting

Trimble Business Center Monitoring

# Trimble Access Monitoring Workflow

1. Define Station Setup Type
  - a. Station Setup
  - b. Station Setup plus
  - c. Resection
2. Define Control Points
3. Define Monitored Points
4. Perform Reference Measurements
  - a. Automate multiple or single epochs
5. Reporting
  - a. Basic scatter plots and charts in the field
6. Export to
  - a. TBC Monitoring (.job/.jxl)
  - b. Trimble 4D Control (automated monitoring)



# Trimble Access Monitoring Workflow

## Monitoring Setup and Point List



≡

Projects


↺ ↻

New

Filter project

Last used ^

⌵



Campaign-Manual-Based Monitoring


Germany

14:55

⌵

Campaign-Manual-Based Monitoring

⋮



Jobs (4)

Monday-26-07

Reference

Tuesday-27-07

Wednesday-28-07

Properties

Open



# Trimble Access Monitoring Workflow

## Import CSV file format requirements



Field...	Contains...
1	Point Name
2	First ordinate (Northing)
3	Second ordinate (Easting)
4	Elevation
5	Code
6	Description 1
7	Description 2
8	Target height (true vertical)
9	Target type or Prism constant
10	Target mode

Imported CSV file format can contain

- First four fields **must** contain in the CSV file  
Point Name, Northing, Easting, Elevation - required
- All other fields are *optional*
- If fields 8 to 10 are null, file can be imported but the targets must be manually edited before continue.  
To do this select the point in the list and tap **Edit**.
- Field 9: [Prism Type with Prism Constant](#)
- Field 10: [Target Mode](#)



# Trimble Access Monitoring Workflow Options



14:23 29/07 98% LR S -18 0.000 HA:356°45'11" VA:90°00'00"

Monitoring-Prism

### Options

- ☒ Auto-measure passive targets
- ☒ Skip obstructed foresights
- ☒ Laser Pointer (DR only)
- ☒ Repeat Missing Targets

Compare with

First epoch

First epoch

Previous epoch

First and previous epoch

Backsight residual tolerances

Max. Horz. Residuals 0.010m

Max. Vert. Residuals 0.012m

Vertical tolerance 0.024m

Esc Accept



# Trimble Access Monitoring Workflow Displacements



Displacements				
...	Station setup	Time stamp	Number of backsights	Number of foresights
→	StationONE	09:34:40 16/2/2021	1	3
	StationONE	09:38:02 16/2/2021	1	2
	StationONE	09:42:05 16/2/2021	1	2
	StationONE	09:43:11 16/2/2021	1	2
→	StationONE	11:58:44 16/2/2021	1	2
	StationONE	14:40:48 16/2/2021	1	2

- **Displacements** – Check the data in the field
  - Displacements overview of all Epochs
  - Select **first** Station Setup (Reference Epoch)
  - Select **seconds** Station Setup (Compare Epoch)

- **Compare with Reference epoch**
  - *Display* – define column display
  - *Additional epoch* – measure a new epoch
  - *Prev* and *Next* – change the compare epoch

Compare with Reference epoch						
Reference epoch			Compare with			
Station StationONE, Date 09:34:40 16/2/2021			Station StationONE, Date 11:58:44 16/2/2021			
Point name	Type	Δ North	Δ East	Δ Elevation	Number of measurements	
CP1	BS	0.000m	0.000m	0.000m	2	
CP2	FS	0.000m	0.000m	0.000m	2	
CP3	FS	0.000m	0.000m	0.001m	1	



# Trimble Access Monitoring Workflow

## Monitoring Reports



Epoch Comparison with Referenc

File | C:/ProgramData/Trimble/Trimble%20Data/Projects/Campaign-Manual-Based%20...

JOB: wednesday-20-07 (20/07/21)

Reference Coordinates:

Point	North	East	Elevation
MP1	1004.441	2000.000	300.443
MP3	1005.508	2002.623	300.442
MP2	1003.915	2004.100	299.817
MP4	1001.936	2004.914	300.125
MP5	1001.225	2004.796	299.645

Epochs:

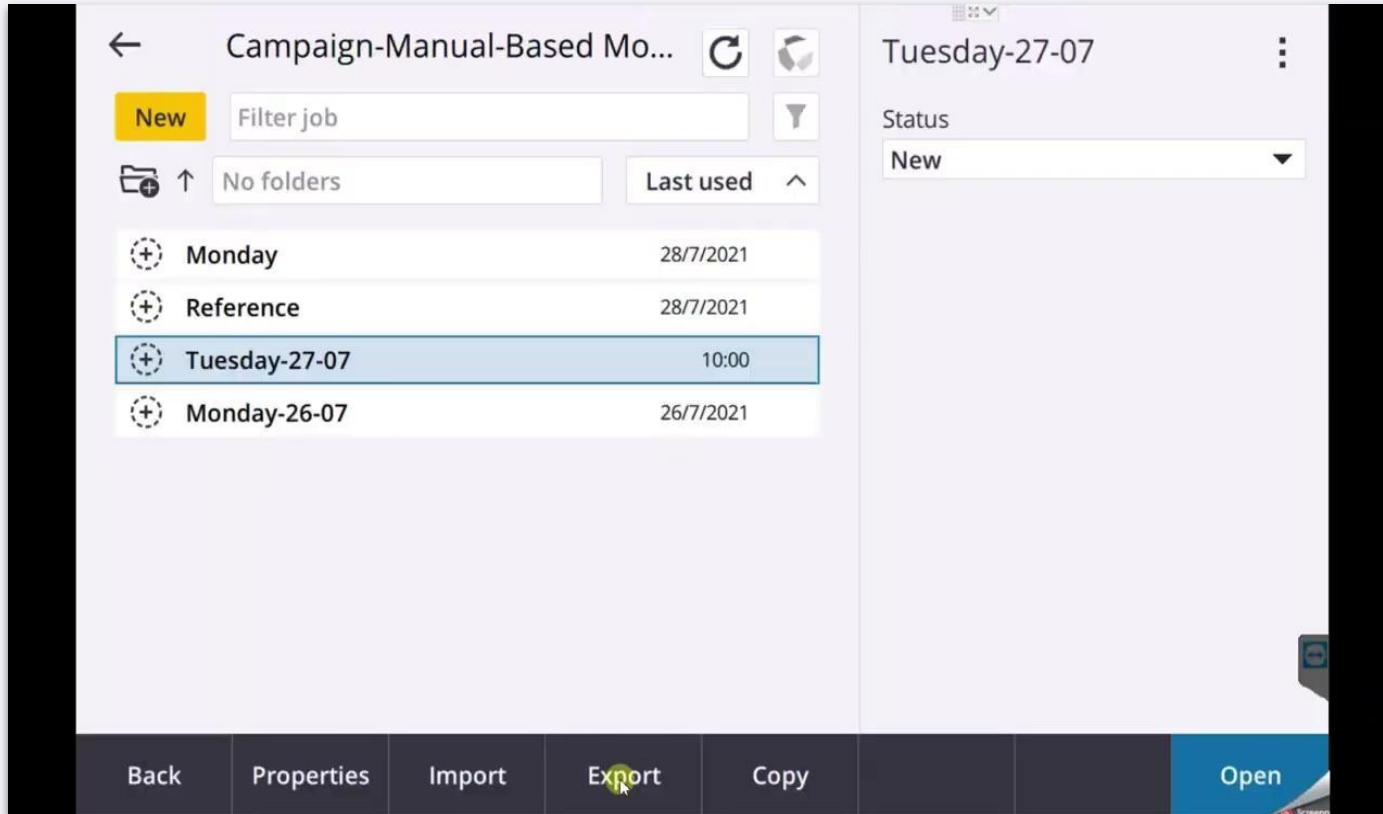
Point	North	East	Elevation
Epoch: 10:04:20 (2021-07-28)			
MP1	1004.442	2000.000	300.443
MP3	1005.508	2002.624	300.442
MP2	1003.915	2004.100	299.817
MP4	1001.936	2004.914	300.125
MP5	1001.225	2004.797	299.645
Epoch: 10:09:02 (2021-07-28)			
MP1	1004.442	2000.000	300.443
MP3	1005.508	2002.624	300.442
MP2	1003.915	2004.100	299.817
MP4	1001.936	2004.914	300.125
MP5	1001.225	2004.797	299.645
Epoch: 10:12:02 (2021-07-28)			
MP1	1004.442	2000.000	300.443
MP3	1005.508	2002.624	300.442





# Trimble Access Monitoring Workflow

## Monitoring Data Export



The screenshot displays the 'Campaign-Manual-Based Mo...' interface. The top left shows a back arrow, the title, and refresh icons. Below is a 'New' button, a 'Filter job' input field, and a funnel icon. A folder icon with an upward arrow is next to a 'No folders' input field, followed by a 'Last used' button with an upward arrow. A list of items is shown:

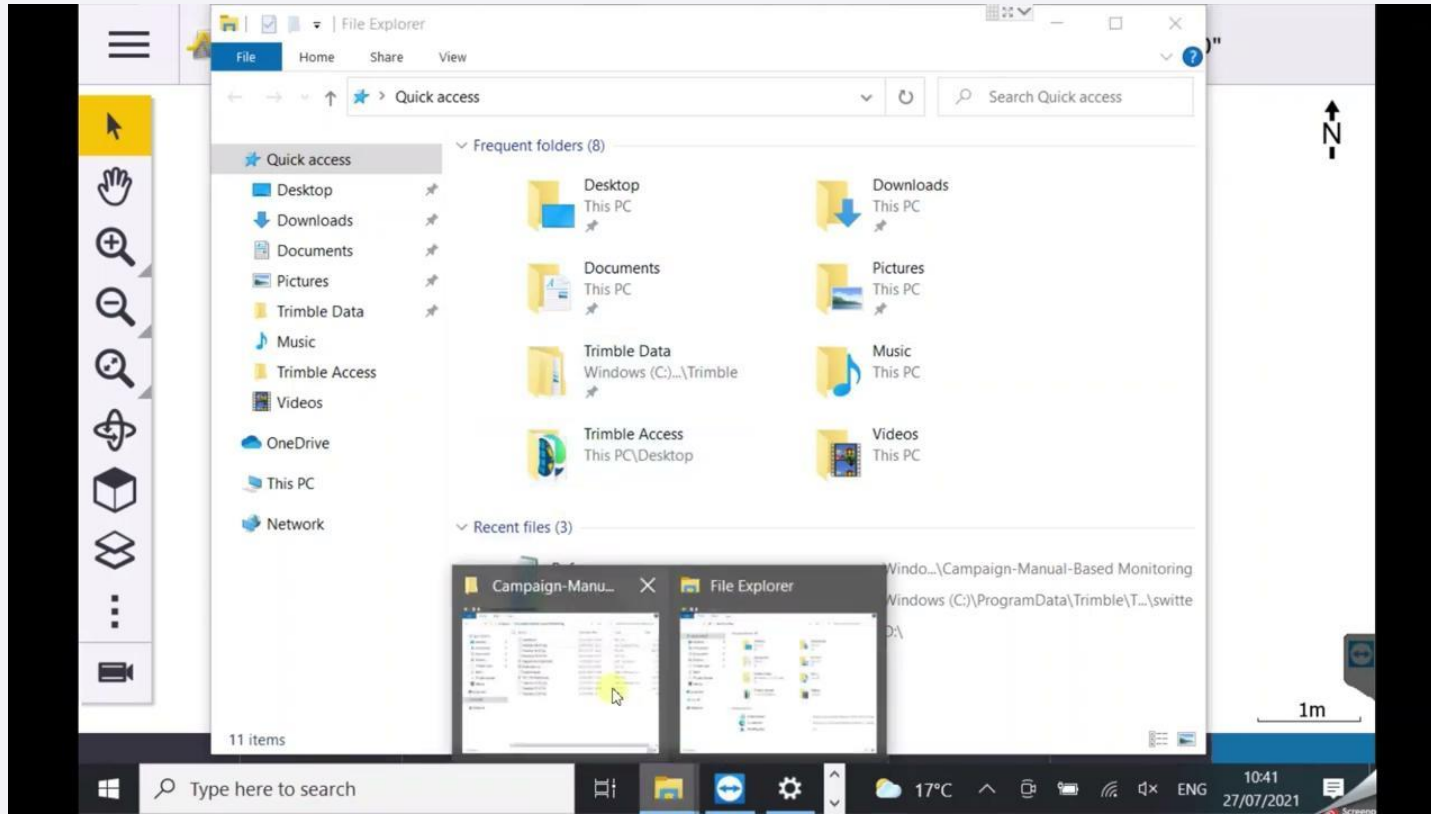
+	Monday	28/7/2021
+	Reference	28/7/2021
+	Tuesday-27-07	10:00
+	Monday-26-07	26/7/2021

The 'Tuesday-27-07' item is selected. The top right shows the date 'Tuesday-27-07' and a status dropdown menu set to 'New'. The bottom navigation bar includes 'Back', 'Properties', 'Import', 'Export' (highlighted with a green circle), 'Copy', and 'Open'.



# Trimble Access Monitoring Workflow

## Monitoring Data Exchange



02

## Trimble Access Monitoring

What's New in 2021.11





# Trimble Access 2021.11

Monitoring 1.1.3



## New Features

- **Export coordinates** of measured epochs in CSV file format
- Add option to **repeat missing targets**
- **Send** Trimble Access Monitoring **reports** to **Trimble Connect** project **VIDEO NEXT SLIDE**
- **Edit Monitoring target** information when Monitoring round is **paused**
- **Compare with previous epoch** to turn to previous measured position in Monitoring round
- **Add configuration page** when exporting to Settop M1 for automated monitoring setup





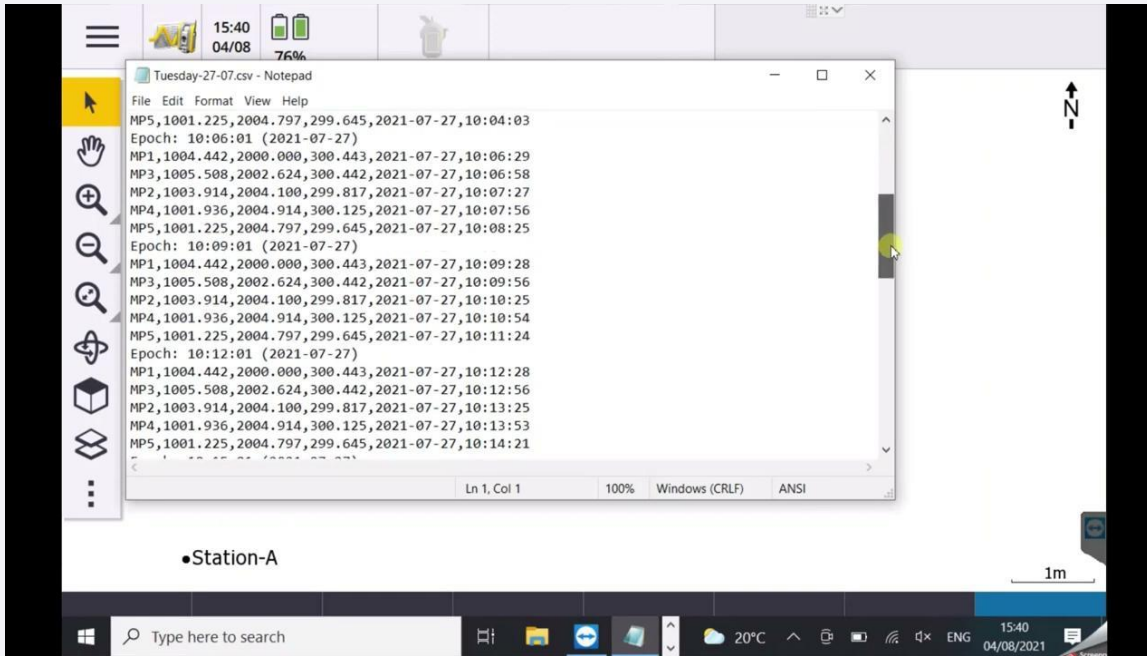
# Trimble Access 2021.11

## Monitoring 1.1.3

### New Features



- Send Trimble Access Monitoring **reports** to **Trimble Connect** project





# Trimble Access 2021.11

## Monitoring 1.1.3

### Enhancements

#### ■ **Sort Point List by clockwise azimuth direction**

You can now sort the **Point list** by clockwise direction from reference (backsight) azimuth. This reduces the time to measure multiple targets in various directions by limiting the size of rotation the instrument turns in each measurement. To sort by this method, tap the **Sort** softkey below the **Point list** and select the required sorting method.





14:18  
28/07



S  
0.000



-18  
0.000  
Monitoring-Prism

HA:0°00'02" VA:84°18'36"

## Point list

Point na...	Type	Azimuth	Horizont...	Target	Target h...	Prism co...	Working ...
MP1	BS	0°00'00"	4.441m	Prism	0.000m	+0mm	Autolock
MP3	FS	46°19'20"	5.669m	Prism	0.000m	+0mm	Autolock
MP4	FS	68°30'03"	5.283m	Prism	0.000m	+0mm	Autolock
MP5	FS	75°40'18"	4.950m	Prism	0.000m	+0mm	Autolock
MP2	FS	25°28'23"	6.101m	Prism	0.000m	+0mm	Autolock



Cancel



Edit

Delete

Export CSV  
file

Turn to

Sort

Display

Finish



14:20  
28/07



90%



LR

S  
0.000



Monitoring-Prism

-18  
0.000

HA:0°00'02" VA:84°18'36"

## Point list

Point na...	Type	Azimuth	Horizont...	Target	Target h...	Prism co...	Working ...
MP1	BS	0°00'00"	4.441m	Prism	0.000m	+0mm	Autolock
MP2	FS	25°28'23"	6.101m	Prism	0.000m	+0mm	Autolock
MP3	FS	46°19'20"	5.669m	Prism	0.000m	+0mm	Autolock
MP4	FS	68°30'03"	5.283m	Prism	0.000m	+0mm	Autolock
MP5	FS	75°40'18"	4.950m	Prism	0.000m	+0mm	Autolock

Cancel



Edit

Delete

Export CSV  
file

Turn to

Sort

Display

Finish





# Trimble Access 2021.11

Monitoring 1.1.3



## Resolved issues

### ■ Units

We have fixed a units issue when importing or exporting a Monitoring targets CSV file

### ■ Duplicate points

Uploading a Monitoring Point List CSV that has duplicate point IDs now updates the existing points with the imported target information

### ■ Exporting F1-only measurements

Now if you try to export a site setup that contains F1-only measurements to Trimble 4D Control a message warns that only two-face measurements are supported by Trimble 4D Control

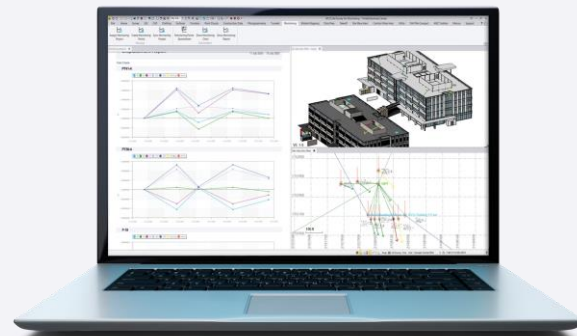
### ■ Application error

You will no longer see an application error when the laser pointer is active



# 03

## The power of Trimble Business Center





# The power of Trimble Business Center

## Data Hub - Field to Finish with Confidence

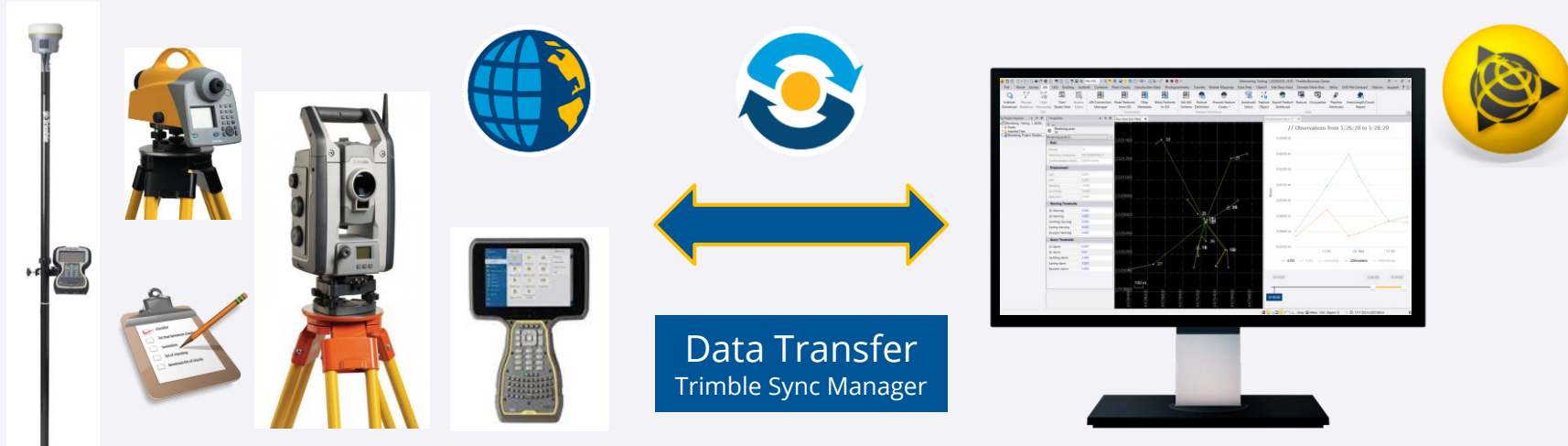
Trimble Business Center combine raw measurements from GNSS, Total Stations, and Levels. Then add in data from UAVs, Mobile Mapping Systems and Terrestrial Laser Scanner, all of which is scaled to your survey data

### Supported Workflows

- Field Data QA/QC
- Adjustment and COGO
- CAD and Drafting
- Surfaces and Volumes
- Alignment and Coordinates
- Data Prep
- Takeoff and Mass Haul
- Trimble VISION and Aerial Photogrammetry
- Scanning and Point Clouds
- GIS
- Utility Modeling
- Tunneling
- Monitoring
- Mobile Mapping
- Drilling, Piling, Dynamic Compaction



# Workflow for Semi-automated Monitoring



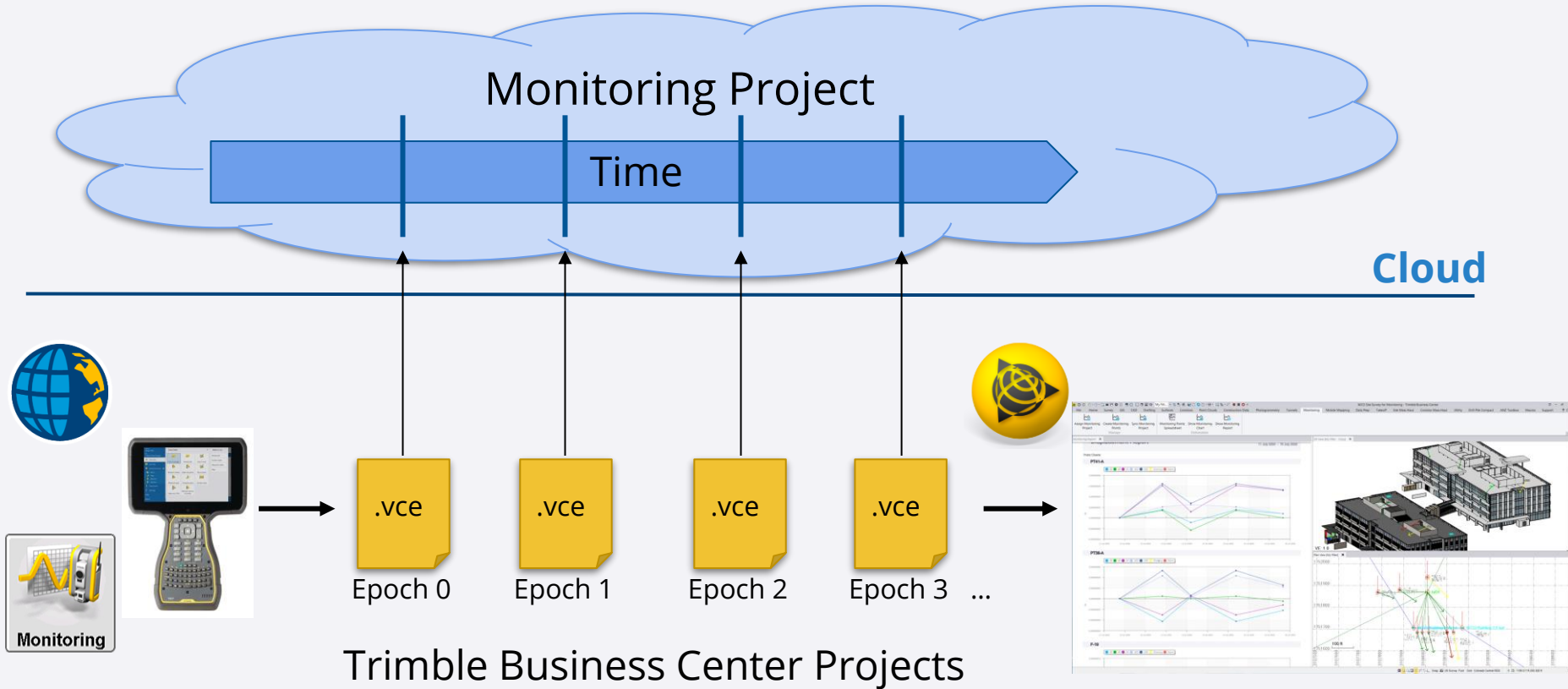
Data Collection and Scheduling

Total station, GNSS, level  
Trimble Access Monitoring field software

Data Management, Processing  
and Reporting

Trimble Business Center Monitoring

# How is the Monitoring Data managed in TBC?

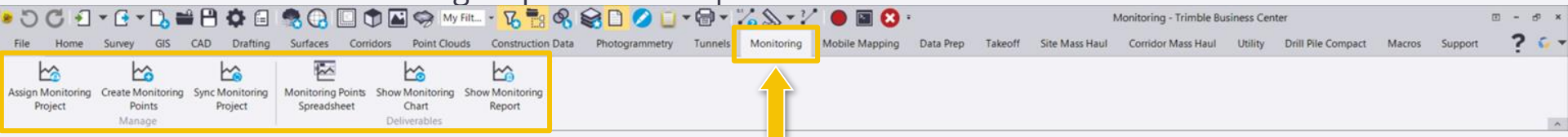


# Trimble Business Center Monitoring Workflow

\*Follow commands on **Monitoring** ribbon in order from left to right

1. Create new TBC project
2. Import Survey data into TBC
3. Perform Adjustments/Quality Control
4. Assign/Create Monitoring Project
5. Create Monitoring Points
6. Sync Monitoring Project
7. View Monitoring Point Displacement Vectors and Spreadsheet
8. View interactive Monitoring Displacement Chart
9. Create Monitoring Displacement Report

*Repeat Steps 1-6 for each epoch of data*

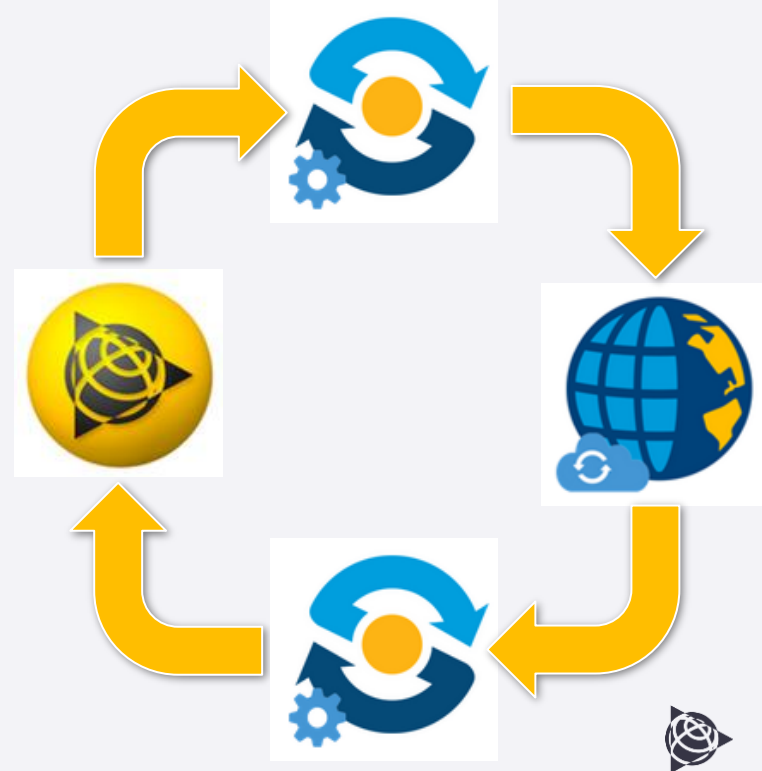
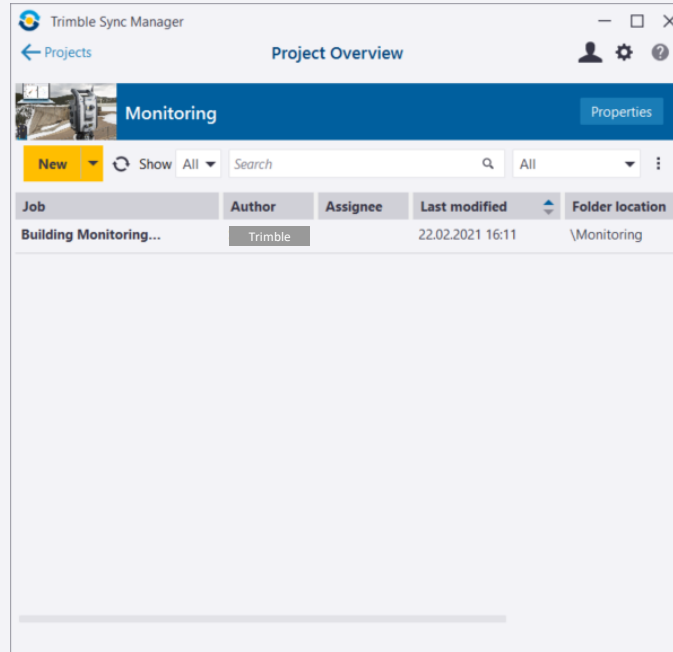


# Trimble Business Center

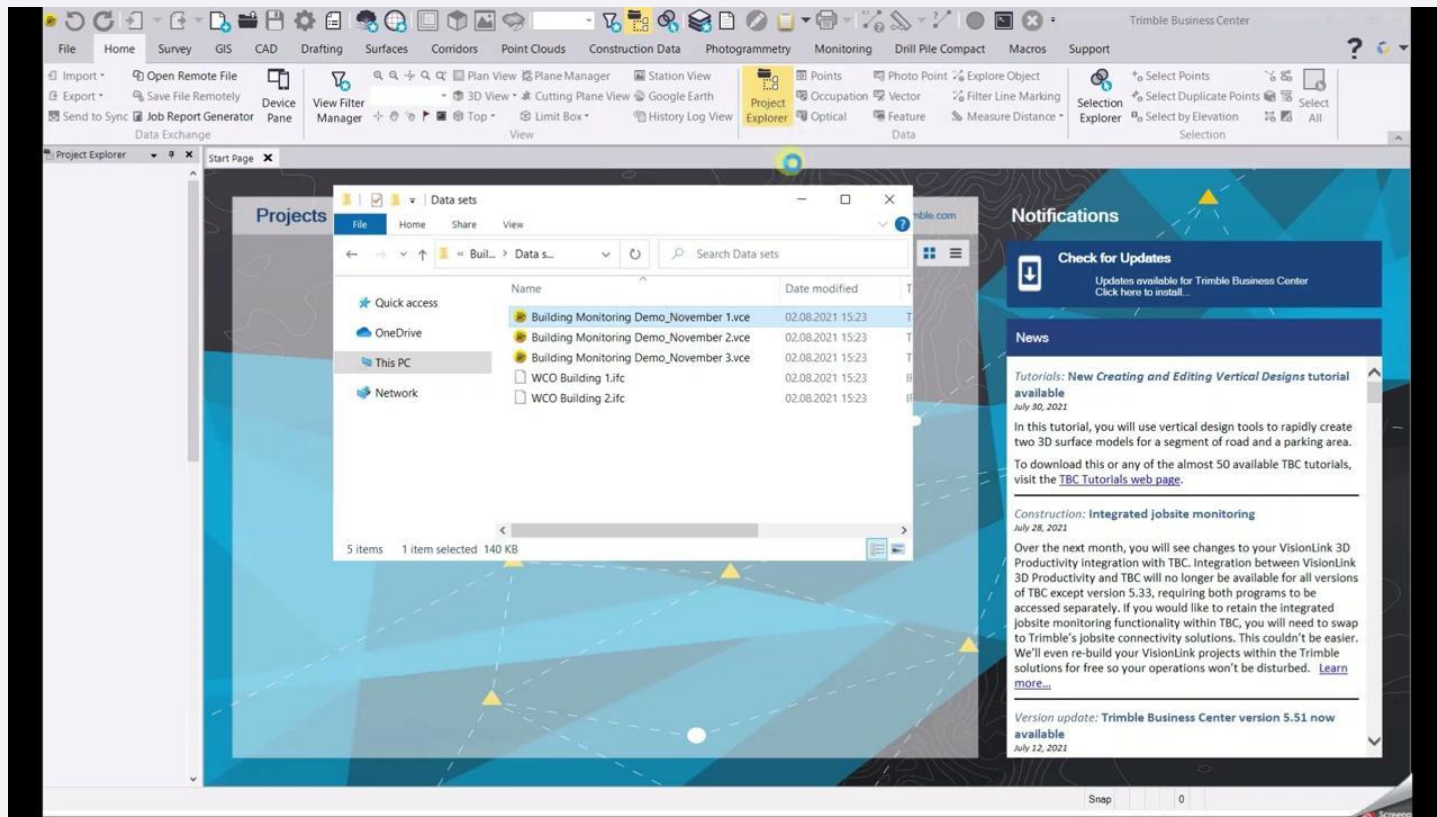
## Importing Monitoring Data | Trimble Sync Manager



<https://geospatial.trimble.com/sync-manager>



# Trimble Business Center Monitoring Workflow

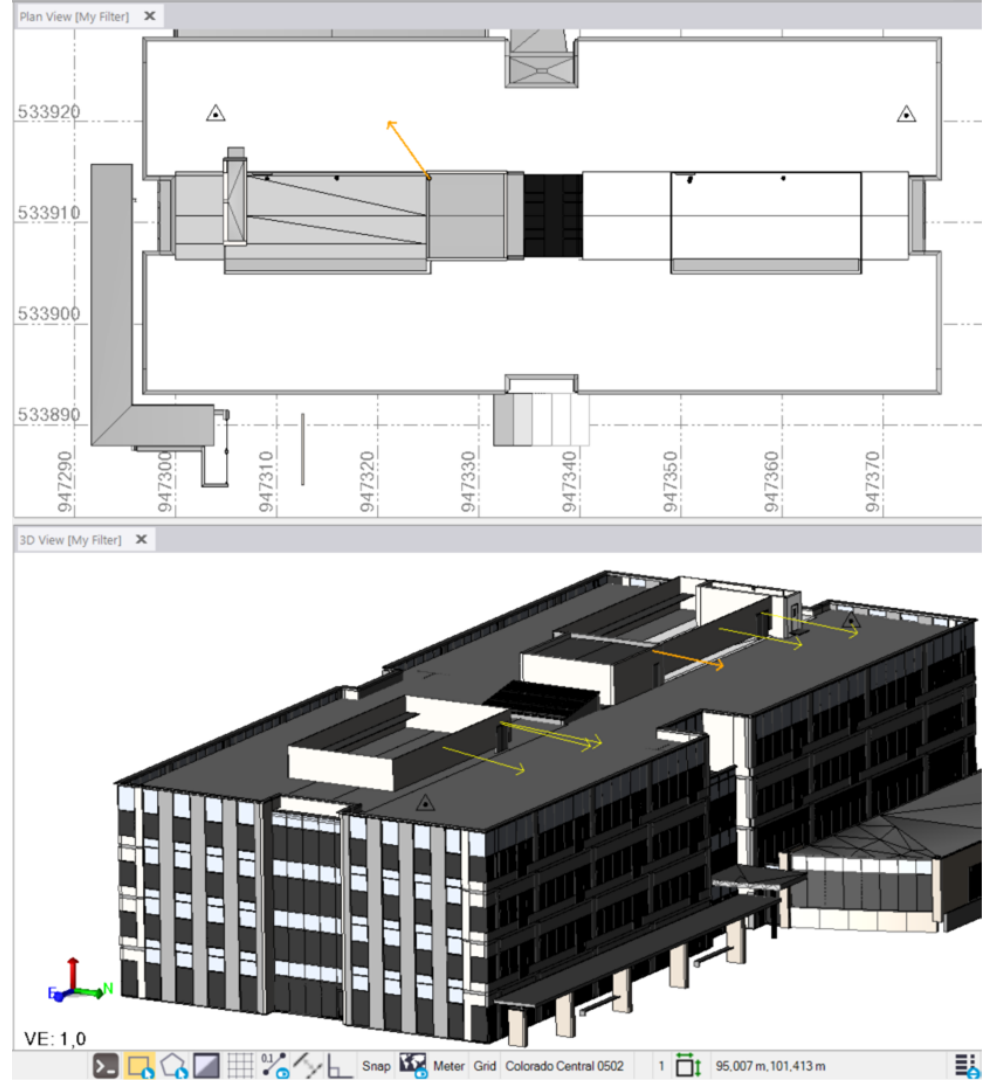




# 03

## Trimble Business Center Monitoring

What's New in 5.50

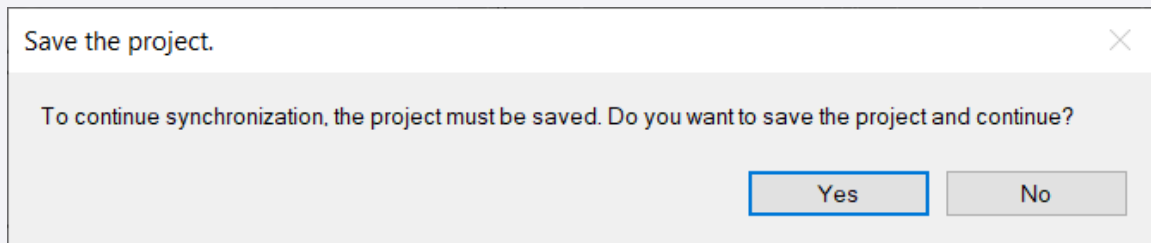




# Trimble Business Center 5.50

## Point monitoring enhancements

- After selecting points to monitor, the **automatic synchronization process** begins immediately (no need to first run the Sync Monitoring command as before). This eliminates the need for an additional command when adding new epochs to a monitoring project.

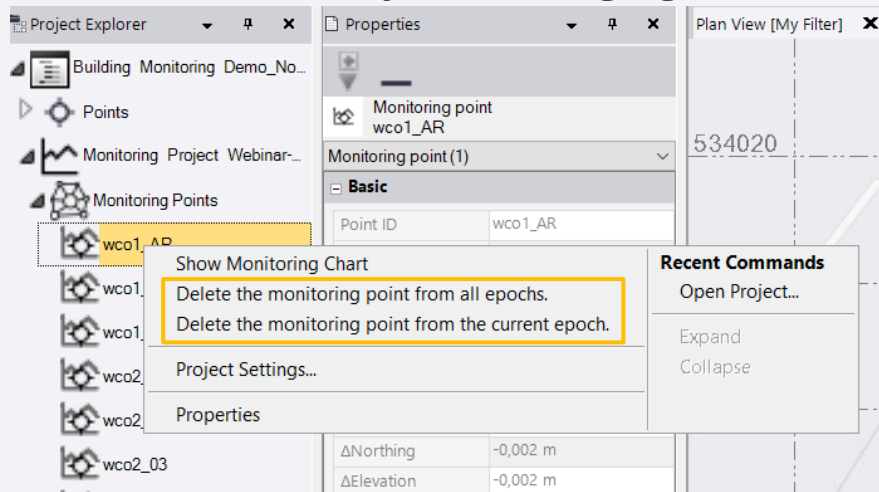




# Trimble Business Center 5.50

## Point monitoring enhancements

- You can **select any monitoring point** in the Project Explorer and select to **delete** it from the **current epoch** or from **all epochs**. This provides additional flexibility for managing monitoring projects in TBC.



04

# Subscription Offering

Trimble Access

Trimble Business Center





# Trimble Access Subscription Base Plan

## Good



### GNSS Only

Survey field software for support of survey workflows with GNSS Receivers only

- ✓ Support for GNSS Receiver based workflows in surveying
- ✓ Feature coding, including measure codes for repetitive tasks
- ✓ Graphical COGO routines for calculating points and features
- ✓ Graphical staking of points, lines, arcs, and alignments

## Best



### General Survey

Survey field software for support of survey workflows with GNSS Receivers and Optical Instruments

- ✓ Feature coding, including measure codes for repetitive tasks
- ✓ Graphical COGO routines for calculating points and features
- ✓ Graphical staking of points, lines, arcs, and alignments
- ✓ Topo surveys and scan data
- ✓ Continuous display of maps or video and forms side by side
- ✓ Trimble VISION™ enabled sensor control for integrated surveying workflows
- ✓ Integrated Surveying™ technology combining optical, scanning, and GNSS data, plus images, in the same job





# Trimble Access Choose your application



## Roads

Define, survey, and report your road with a simplified easy to use graphical interface specific to standard roading operations.

[How to Buy >](#)



## Pipelines

Collect pipe attribute data, record joint relationships, and link survey data electronically for verification at every step in the process.

[How to Buy >](#)



## Mines

Survey and report on mine operations with workflows for specific tasks such as auto staking lines and positioning drilling rigs within a mine.

[How to Buy >](#)



## Tunnels

Define, survey, stakeout, and report on tunnel operations in an easy to use interface for tasks such as marking areas of underbreak and overbreak, and positioning machinery.

[How to Buy >](#)



## Monitoring

Set up, monitor and report on regular control and deformation surveys. The workflow is streamlined for regular, but not necessarily continuous, control and deformation surveys.

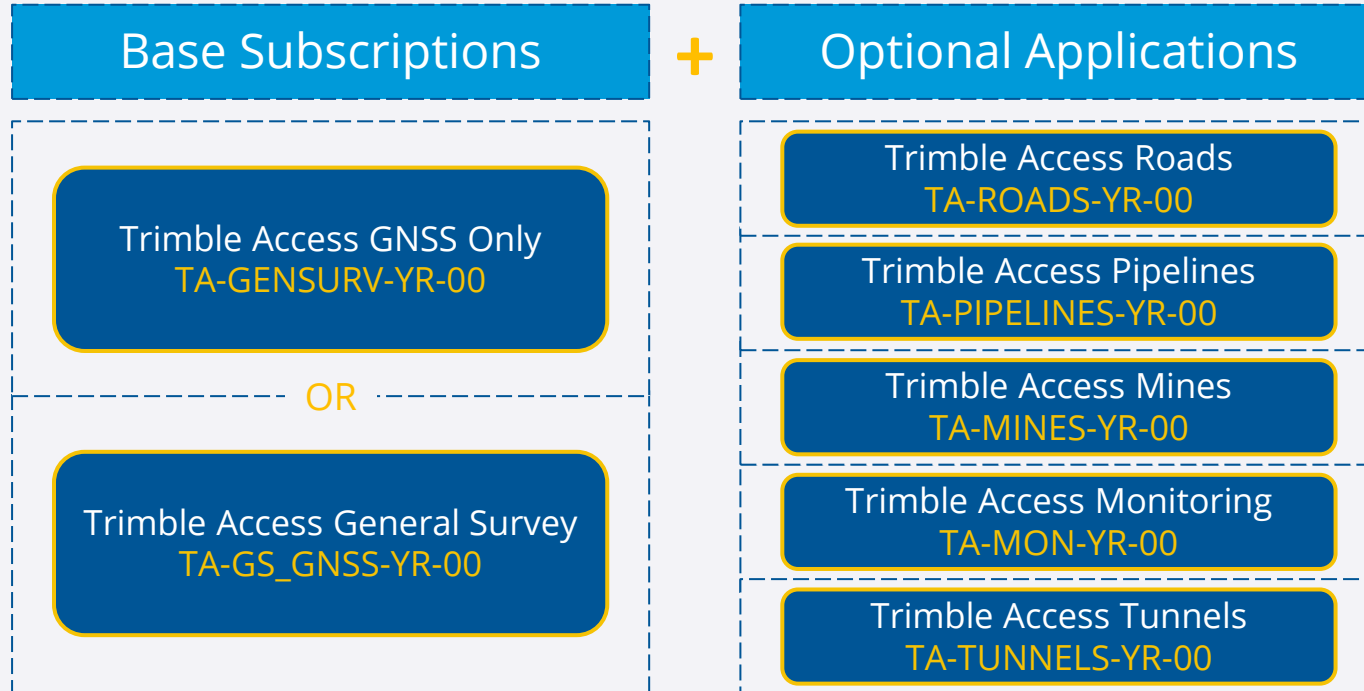
[How to Buy >](#)





# Trimble Access Subscription

## Annual Subscription Part Numbers



[Trimble Access Annual Subscription Pricing and PNs | All Regions](#)





# Trimble Access Subscription Resources

---

## **PARTNER CONFIDENTIAL - DO NOT SHOW OR USE WITH CUSTOMERS**

- [TBC + Trimble Access Partner FAQs](#) **BULLETIN**
- [TBC + Trimble Access Subscriptions for Existing Customers](#) **BULLETIN**
- [TBC + Trimble Access Subscriptions Renewals](#) **BULLETIN**
- [Trimble Access Annual Subscription Part Numbers Effective for 2020.20](#)

## **PUBLIC**

- [Trimble Access Customer End-User License Agreement \(EULA\)](#)
- [TBC + Trimble Access Customer FAQs](#) **BULLETIN**

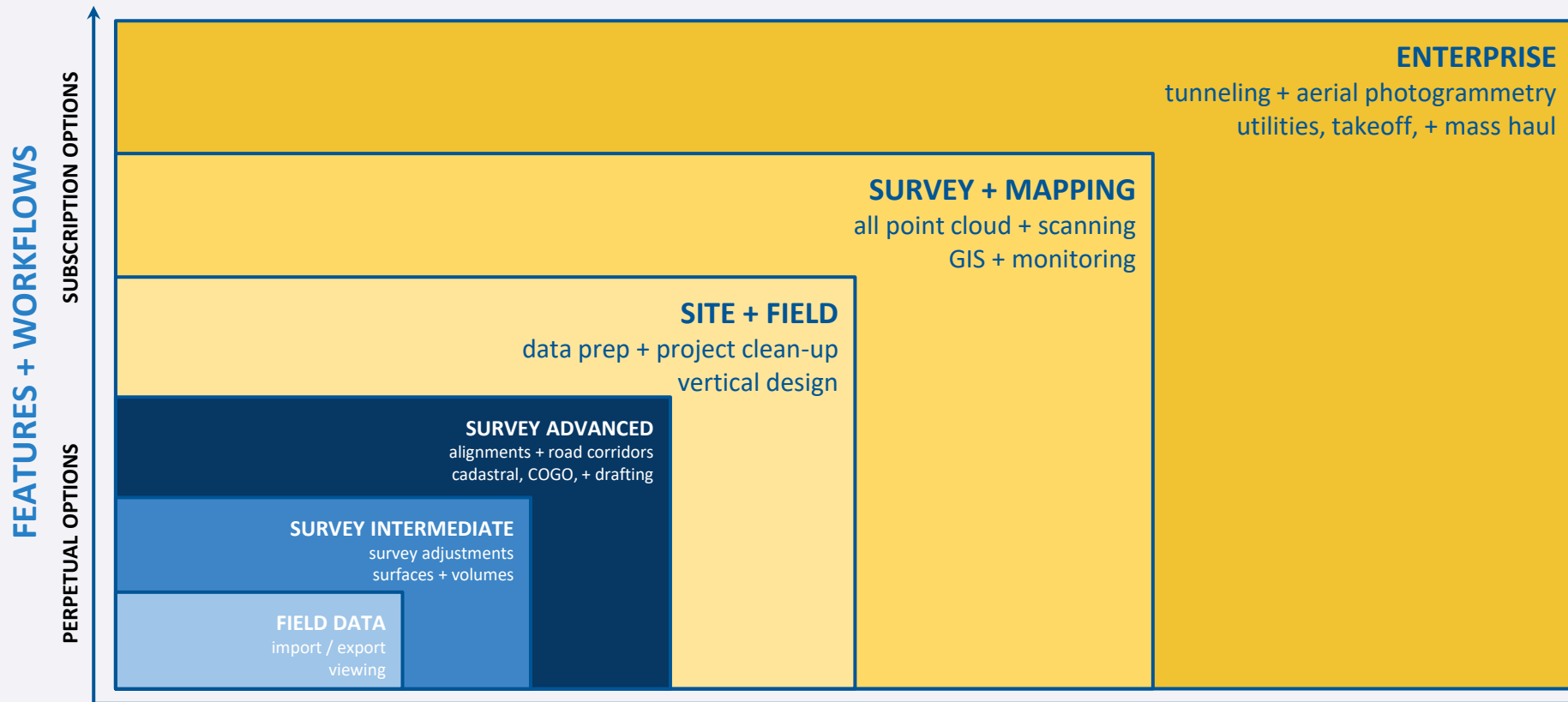






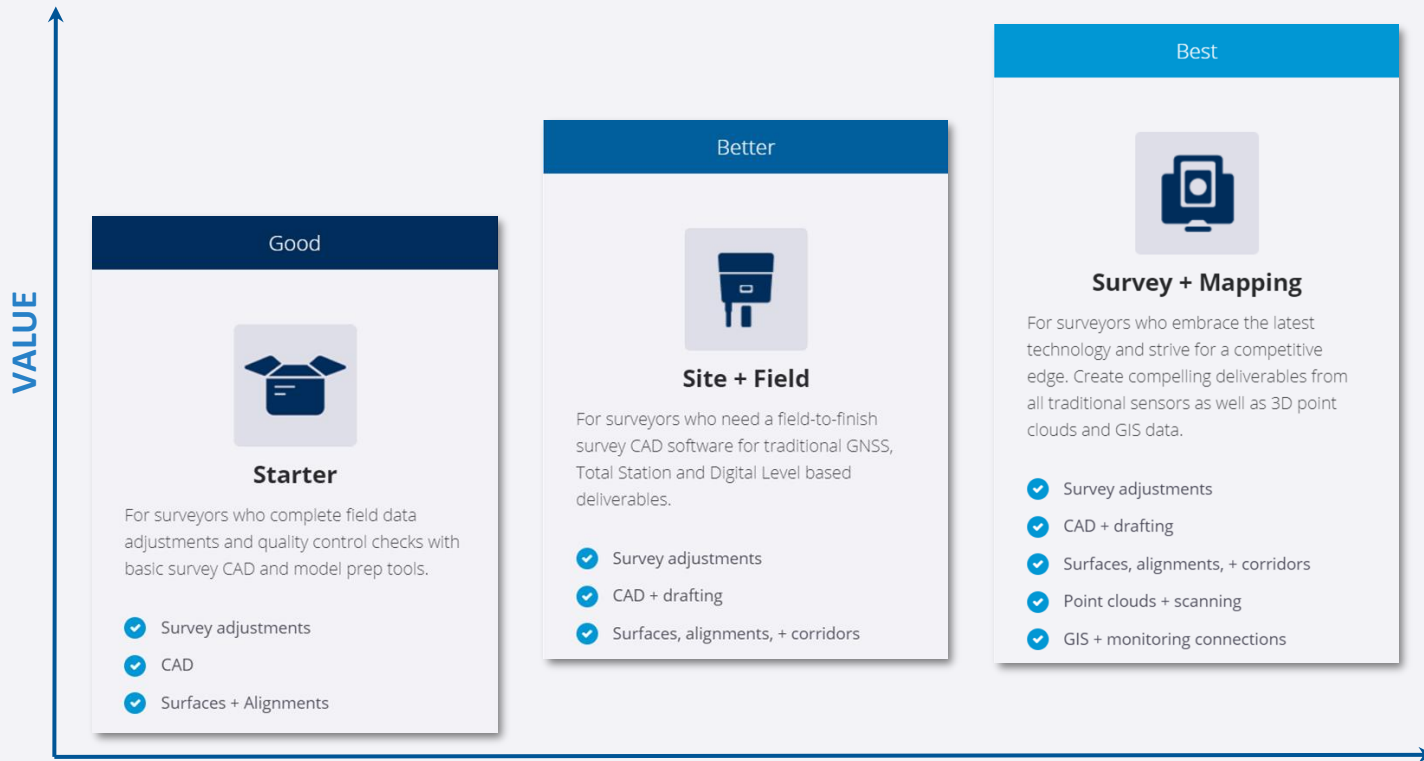
# Trimble Business Center

## Subscription + Perpetual Equivalencies





# Trimble Business Center Core Offerings





# Site + Field Subscription Edition



## CHOOSE FOR:

- Survey adjustments
- CAD + drafting
- Surfaces, alignments, + corridors

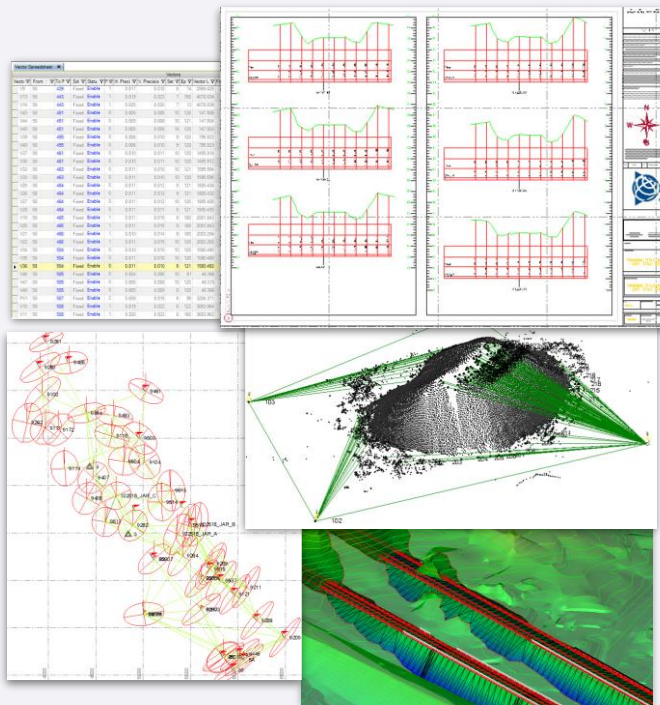
## TARGETED CUSTOMER:

- Small + medium-sized survey firms

## PERPETUAL EQUIVALENT:



## HIGHLIGHTS:



## CORE FEATURES:

triangulated surfaces

digital cross-sections

**CAD COMMAND LINE**

gnss baseline processor

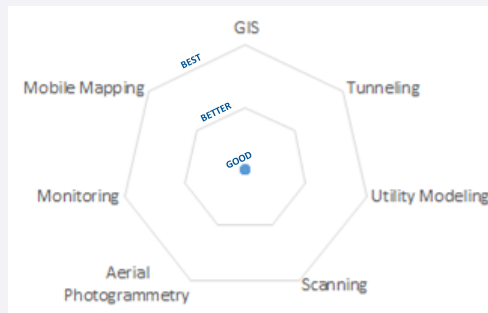
tolerance flags feature coding

PLAN SETS least-squares adjustment

dxf export

cadastral

## SPECIALTY FEATURES:





# Survey + Mapping Subscription Edition



## CHOOSE FOR:

- Survey adjustments
- CAD + drafting
- Surfaces, alignments, + corridors
- Point clouds + scanning
- GIS + monitoring connections

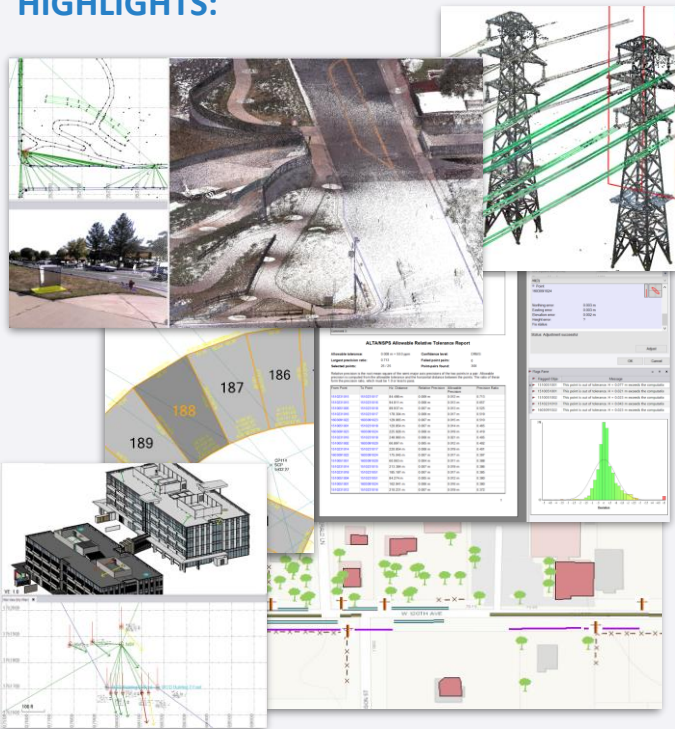
## TARGETED CUSTOMER:

- medium + large-sized multi-disciplinary survey firms

## PERPETUAL EQUIVALENT:



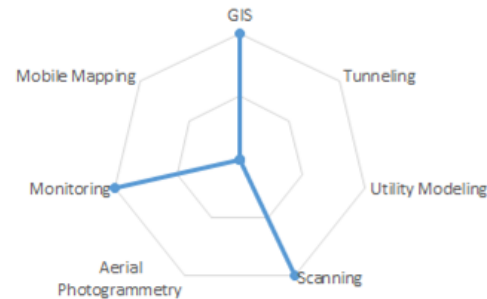
## HIGHLIGHTS:



## CORE FEATURES:

field-to-finish **survey adjustments**  
monitoring workflows  
point + linear feature extraction  
SCAN REGISTRATION + GEOREFERENCING  
**PUBLISH TO ESRI**  
cutting plane **projected surfaces**  
point cloud classification **use gis schema**

## SPECIALTY FEATURES:





# Enterprise Subscription Edition



## CHOOSE FOR:

- Survey adjustments
- CAD + drafting
- Surfaces, alignments, + corridors
- Point clouds + scanning
- GIS + monitoring connections
- Tunneling + utility workflows
- UAV data processing

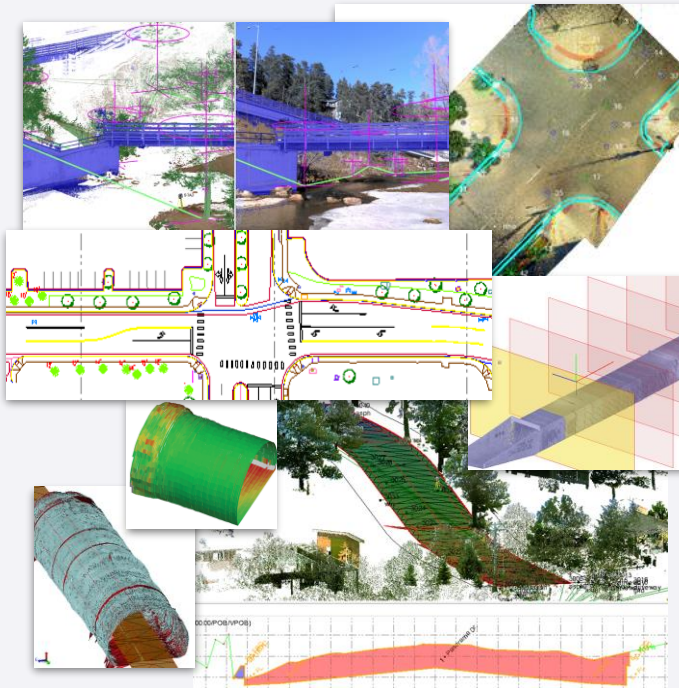
## TARGETED CUSTOMER:

- medium + large-sized multi-disciplinary survey + construction firms

## PERPETUAL EQUIVALENT:



## HIGHLIGHTS:



## CORE FEATURES:

3D data + ifc models

**survey vertical applications**

point + linear feature extraction

**earthwork summary reports**

survey adjustments **CORRIDORS**

comprehensive data integration

tunnel meshes SINGLE SOFTWARE

monitoring workflows

## SPECIALTY FEATURES:



# Trimble Business Center Speciality Offerings



## Aerial Photogrammetry

For surveyors and remote pilots who create deliverables from unmanned aerial vehicles (UAVs).

- ✓ Survey adjustments
- ✓ CAD + drafting
- ✓ Surfaces, alignments, + corridors
- ✓ UAV data processing



## Construction

For civil construction and earthworks professionals who generate machine control models, accurate quantity takeoff reports, digitized PDFs, and roadway cross-sections.

- ✓ CAD + drafting
- ✓ Surfaces, alignments, + corridors
- ✓ Data prep + machine control
- ✓ Quantity takeoffs + mass haul analysis
- ✓ Parametric roadway + utility modeling



## Mobile Mapping

For surveyors and mapping specialists who process data and generate deliverables from Trimble mobile mapping solutions to integrate with traditional survey sensors.

- ✓ Survey adjustments
- ✓ CAD + drafting
- ✓ Surfaces, alignments, + corridors
- ✓ Point clouds + scanning
- ✓ GIS + monitoring connections
- ✓ Trimble MX9 processing







# Aerial Survey Subscription Edition



## CHOOSE FOR:

- Survey adjustments
- CAD + drafting
- Surfaces, alignments, + corridors
- Point clouds + scanning
- UAV data processing

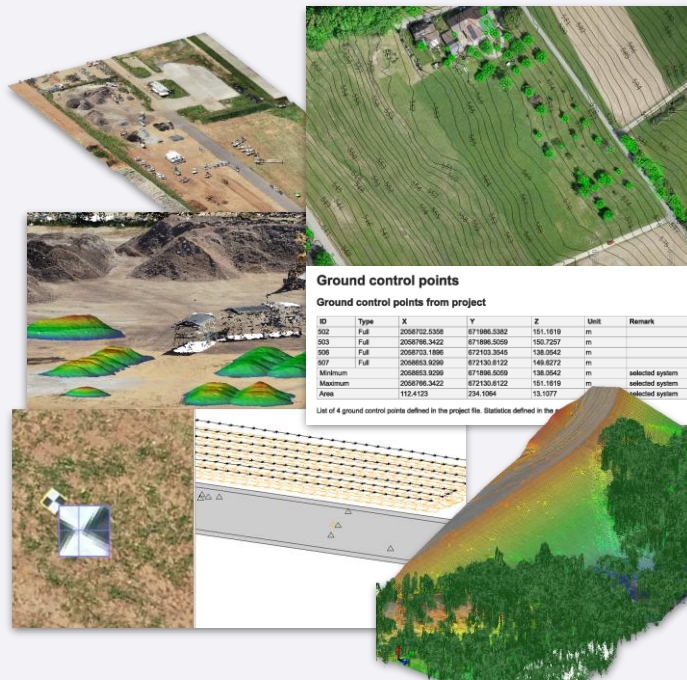
## TARGETED CUSTOMER:

- UAV survey + remote pilots

## PERPETUAL EQUIVALENT:



## HIGHLIGHTS:



## CORE FEATURES:

tie-point adjustments

uasmaster

UAV + survey data integration

digital surface model rasters

ADJUSTMENT REPORTS

point cloud generation

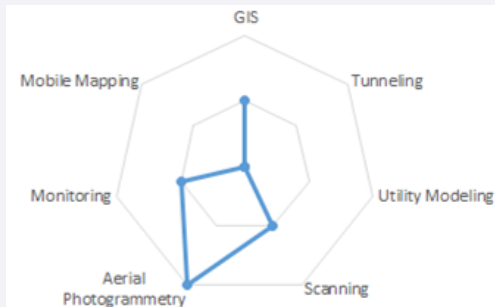
survey-grade with GCPs

ground extraction

ORTHOMOSAICS

DJI, delair, sensefly, wingtra

## SPECIALTY FEATURES:





# Construction Subscription Edition



## CHOOSE FOR:

- CAD + drafting
- Surfaces, alignments, + corridors
- Data prep + machine control
- Quantity takeoffs + mass haul analysis
- Parametric roadway + utility modeling

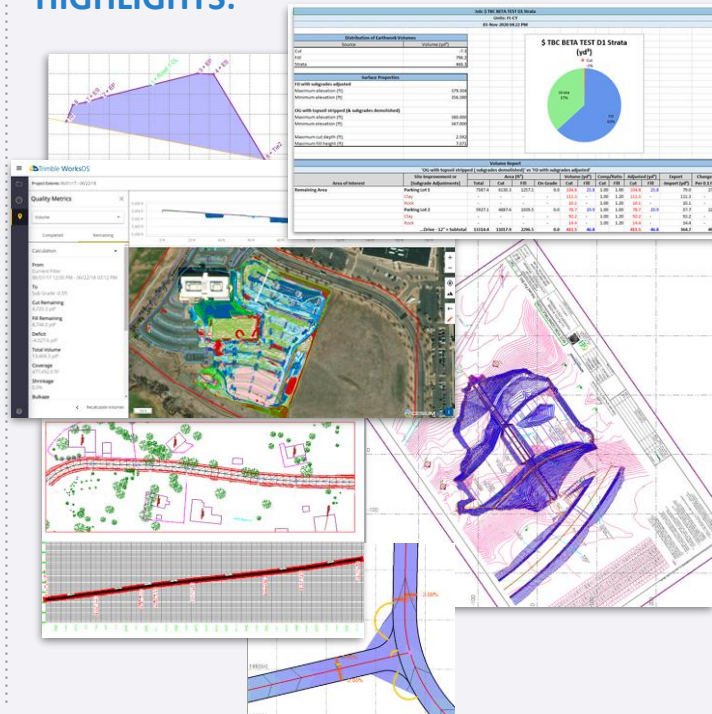
## TARGETED CUSTOMER:

- Civil construction + earthwork professionals

## PERPETUAL EQUIVALENT:



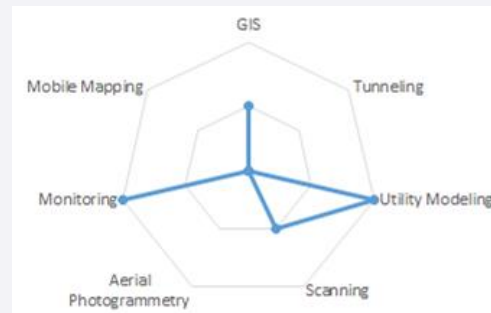
## HIGHLIGHTS:



## CORE FEATURES:

**machine control** worksOS  
**CUSTOM TAKE-OFF REPORTS**  
PARAMETRIC INTERCHANGES + INTERSECTIONS  
material + strata layers  
vertical design + side slopes **site improvements**  
**data prep + site modeling**  
digitize cross-sections  
**pipe + trench modeling**

## SPECIALTY FEATURES:







# Mobile Mapping Subscription Edition

## CHOOSE FOR:

- Survey adjustments
- CAD + drafting
- Surfaces, alignments, + corridors
- Point clouds + scanning
- GIS + monitoring connections
- Trimble MX9/MX50 processing

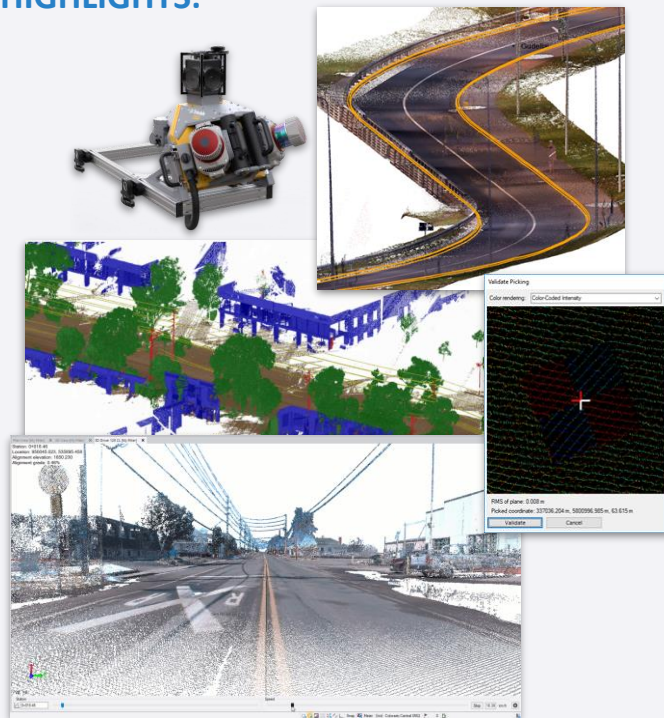
## TARGETED CUSTOMER:

- MX9/MX50 + mapping specialists

## PERPETUAL EQUIVALENT:



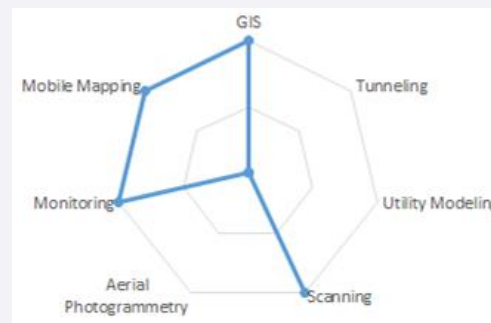
## HIGHLIGHTS:



## CORE FEATURES:

batch registration  
feature extraction generate PFIX  
**PROCESS MX9/MX50 DATA**  
smart pick registration  
export to topoDOT IMPORT SBET  
MTA adjustment export to TMX  
split runs

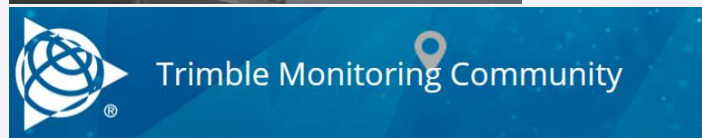
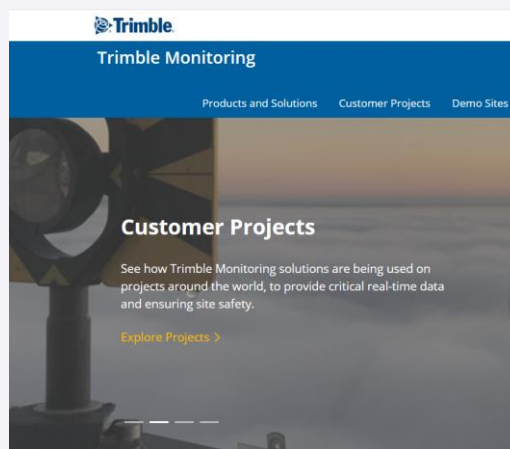
## SPECIALTY FEATURES:



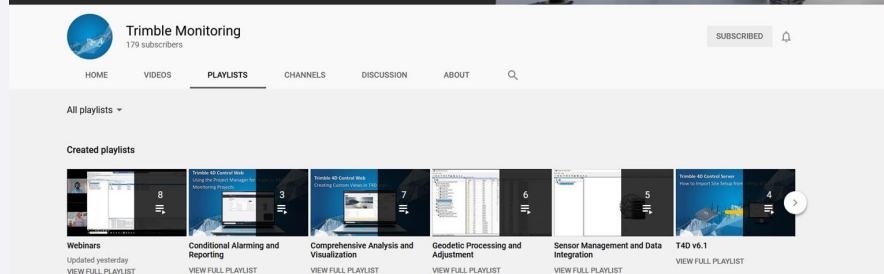
# 05

## Resources

- Monitoring Website
- Monitoring Community
- Resource Center
- Power Hours
- Trimble Access Tech Tips
- YouTube Channel

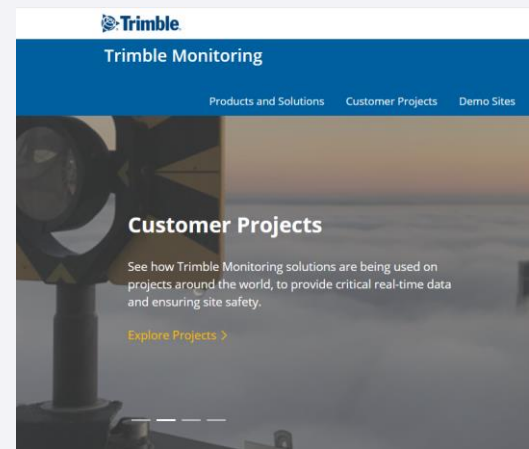
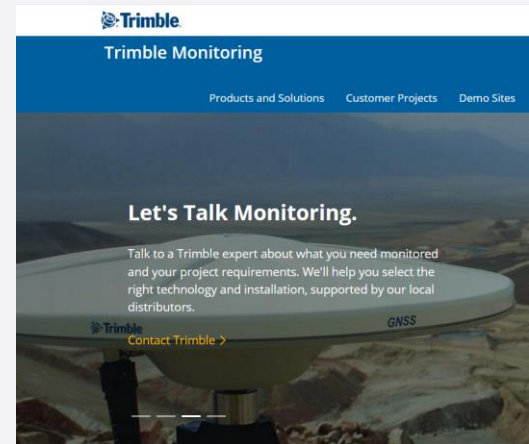
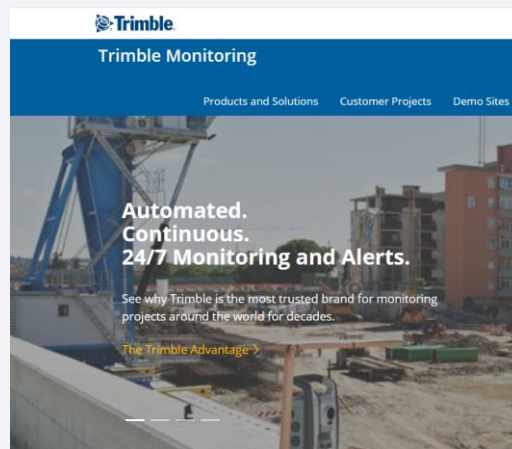
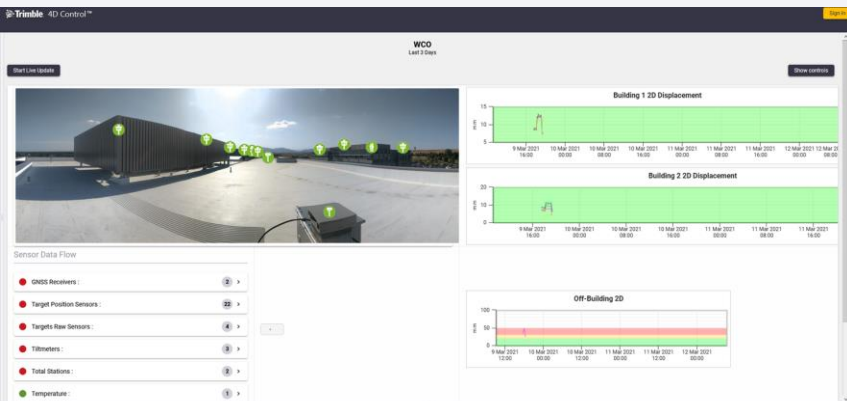


[Communities](#) / Public Community



# Monitoring Website

- [Monitoring.Trimble.com](https://Monitoring.Trimble.com)  
One dedicated website for Trimble Monitoring
- Project examples and success stories
- Live automated monitoring demo sites in action
  - Useful for Sales Demos and customer presentations

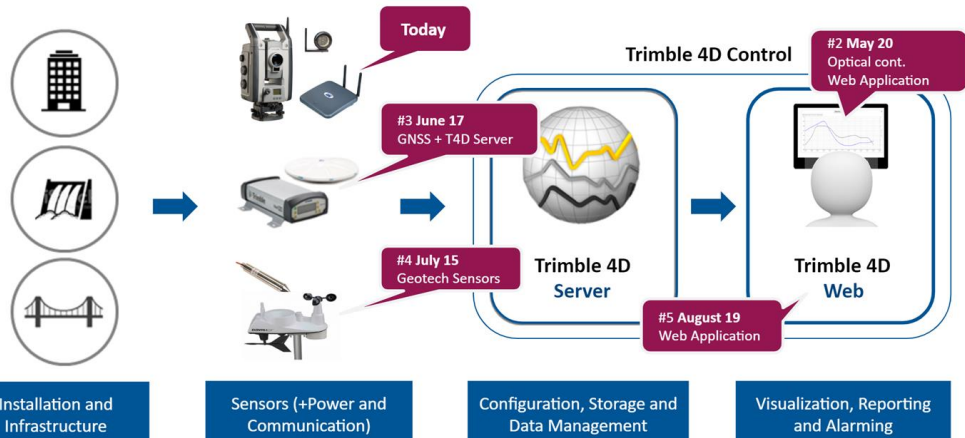


# Monitoring Power Hour Webinar Series

- Moving to Project/Customer specific webinars
- Every 3rd Wednesday of the month
- Recordings available on [Geospatial website](#)
- Professional and Industry
- Technical and How-To



## Outlook Webinar Series



# Monitoring Trimble Community

- [Monitoring Trimble Community](#)
  - Customer resource and engagement
  - Trimble Team monitors questions



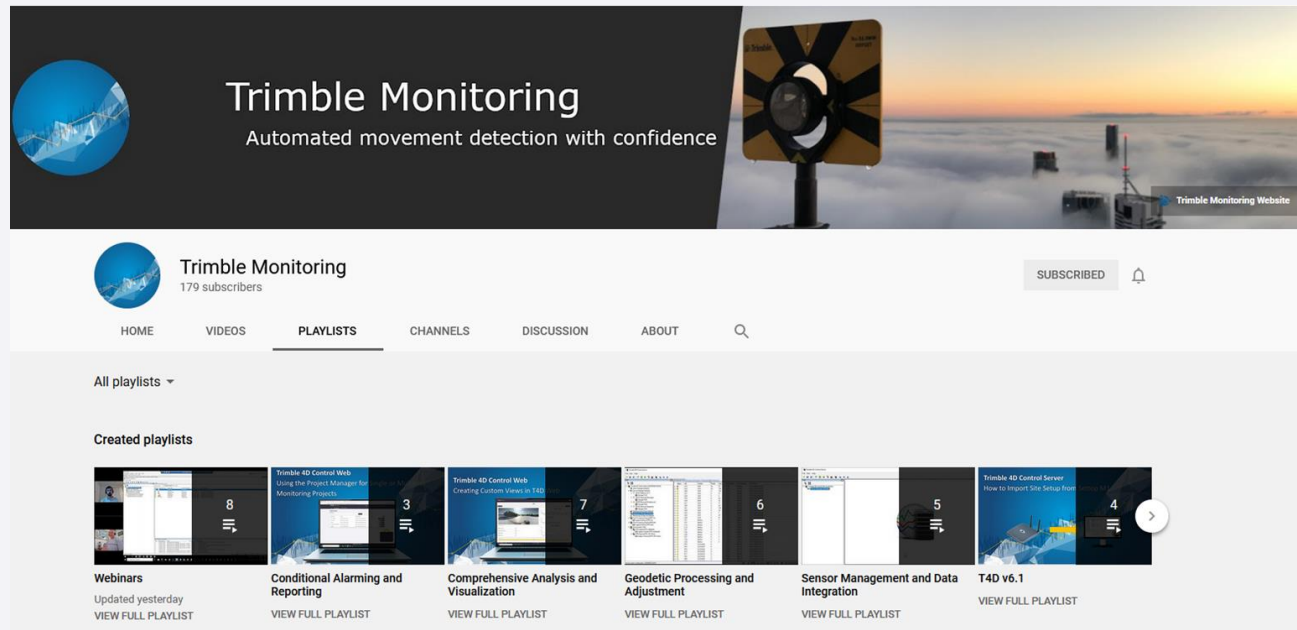
[Communities](#) / Public Community

Welcome to the Trimble Monitoring Community! Join your fellow monitoring professionals and ask questions, showcase a project, and learn from peers in this open online forum.



# Monitoring YouTube Channel

- [YouTube Channel](#) **Subscribe Now!**
  - Tutorials and How-To
  - 53 videos



The screenshot shows the YouTube channel page for Trimble Monitoring. The banner features a blue circular logo with a white line graph and the text "Trimble Monitoring" and "Automated movement detection with confidence". To the right of the banner is a video thumbnail showing a yellow and black striped warning sign in the foreground and a construction site with cranes in the background under a sunset sky. Below the banner, the channel name "Trimble Monitoring" is displayed with a profile picture and "179 subscribers". A "SUBSCRIBED" button and a notification bell icon are to the right. The navigation menu includes "HOME", "VIDEOS", "PLAYLISTS" (which is underlined), "CHANNELS", "DISCUSSION", and "ABOUT", followed by a search icon. Below the navigation menu, there is a section for "All playlists" with a dropdown arrow. Under "Created playlists", there are eight playlist thumbnails, each with a title, a description, and a "VIEW FULL PLAYLIST" link. The playlists are: 1. "Webinars" (Updated yesterday), 2. "Conditional Alarming and Reporting", 3. "Comprehensive Analysis and Visualization", 4. "Geodetic Processing and Adjustment", 5. "Sensor Management and Data Integration", 6. "T4D v6.1", 7. "Trimble 4D Control Web Using the Project Manager for Monitoring Projects", 8. "Trimble 4D Control Web Creating Custom Views in T4D", and 9. "Trimble 4D Control Server How to Import Site Setup Files".

**Trimble Monitoring**  
Automated movement detection with confidence

Trimble Monitoring  
179 subscribers

SUBSCRIBED

HOME VIDEOS **PLAYLISTS** CHANNELS DISCUSSION ABOUT

All playlists ▾

Created playlists

**Webinars**  
Updated yesterday  
VIEW FULL PLAYLIST

**Conditional Alarming and Reporting**  
VIEW FULL PLAYLIST

**Comprehensive Analysis and Visualization**  
VIEW FULL PLAYLIST

**Geodetic Processing and Adjustment**  
VIEW FULL PLAYLIST

**Sensor Management and Data Integration**  
VIEW FULL PLAYLIST

**T4D v6.1**  
VIEW FULL PLAYLIST

**Trimble 4D Control Web**  
Using the Project Manager for Monitoring Projects  
3  
VIEW FULL PLAYLIST

**Trimble 4D Control Web**  
Creating Custom Views in T4D  
7  
VIEW FULL PLAYLIST

**Trimble 4D Control Server**  
How to Import Site Setup Files  
4  
VIEW FULL PLAYLIST



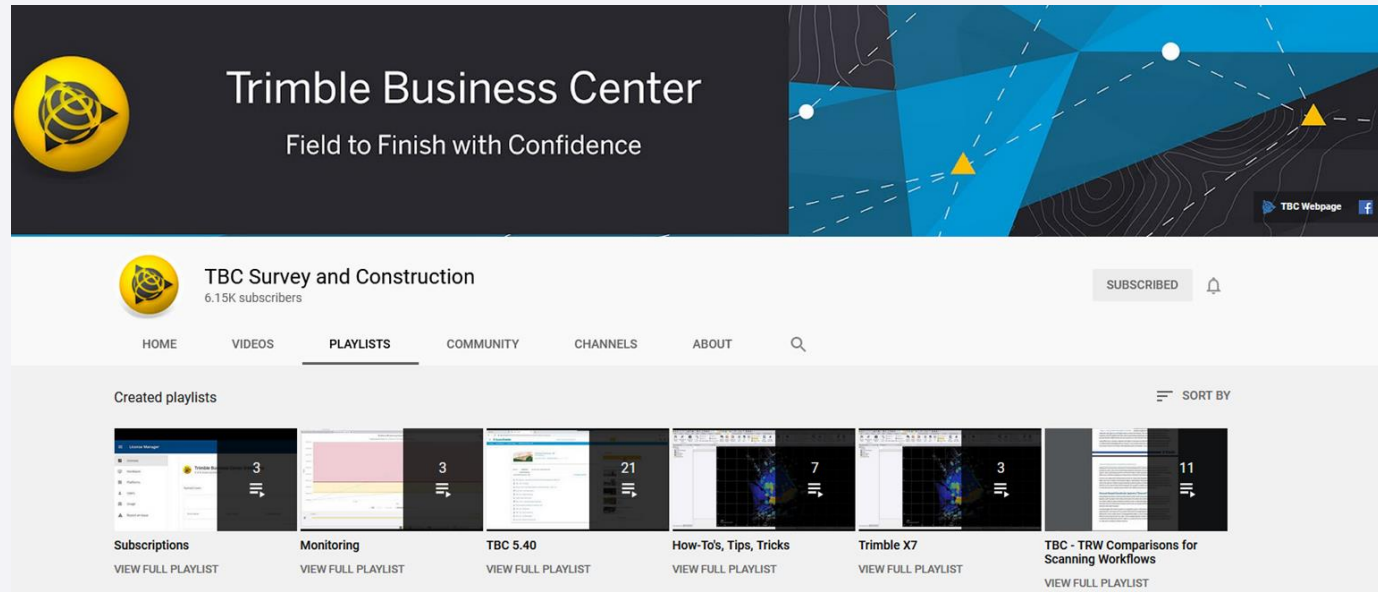
# Trimble Access YouTube Channel

- [YouTube Channel](#) **Subscribe Now!**
- [Trimble Access Tech Tips](#)



# Trimble Business Center YouTube Channel

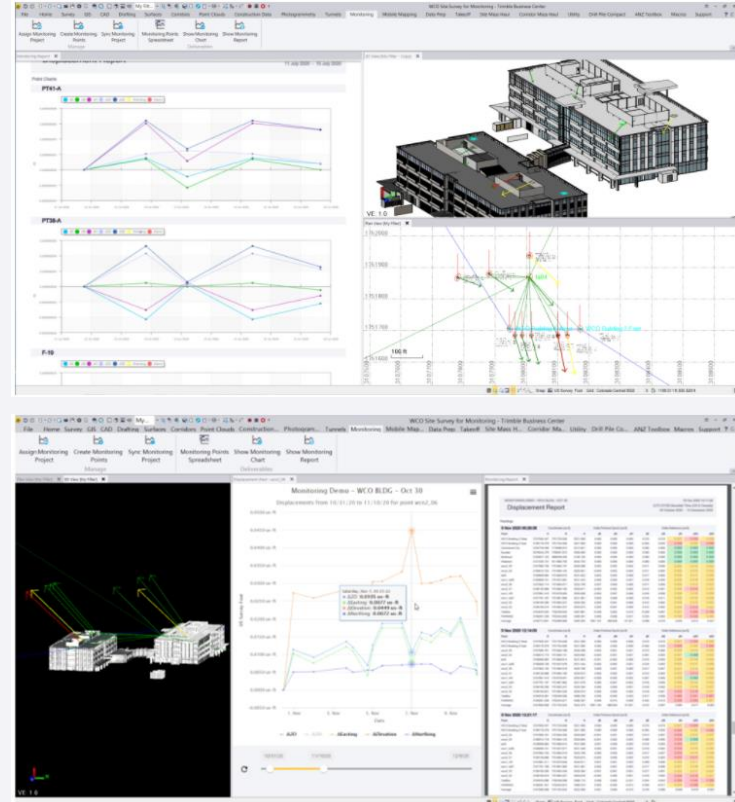
- [YouTube Channel](#) **Subscribe Now!**
  - Tutorials and How-To
  - 300+ videos





# Building Deformation Monitoring using Integrated Survey

- Resource Center - Sample Datasets
  - Utilizing the new Trimble Business Center Monitoring module, the same points were collected at three different epochs to monitor building deformation.
  - Users will learn how to process and manage deformation monitoring data, and to generate comprehensive reporting.



# Thank You

Semi-automated Monitoring

- ✓ Trimble Access Monitoring App
- ✓ Trimble Business Center Monitoring Module

THANK YOU

GRAZIE VINAKA  
ERIMA KASIH  
TAKK  
merci

감사합니다  
다

謝謝  
謝謝

ありがとう